

APPENDIX I
WETLAND DELINEATION REPORT &
JURISDICTIONAL DETERMINATION



**PRELIMINARY WATERS OF THE U.S. DETERMINATION REPORT
MARYLAND SOLAR SITE 1: SHUGART VALLEY PLACE**

CHARLES COUNTY, MARYLAND

ECS PROJECT NO. 47: 4209

FOR

**MD SOLAR 1, LLC
(c/o H&B Solutions)**

JULY 2017



ECS MID-ATLANTIC, LLC

Geotechnical • Construction Materials • Environmental • Facilities

"Setting the Standard for Service"

July 18, 2017

Mr. Jean David
MD Solar 1, LLC (c/o H&B Solutions)
800 Brickell Avenue
Suite 1100
Miami, Florida

ECS Project No. 47.4209

Reference: Preliminary Waters of the U.S. Determination, Maryland Solar Site 1, Shugart Valley Place, Charles County, Maryland

Dear Mr. David:

ECS Mid-Atlantic (ECS) is pleased to present this preliminary Waters of the U.S. Determination for the above-referenced project in general accordance with ECS Proposal No. 47.4079-EPR, dated April 5, 2017. A preliminary Waters of the U.S. Determination entails the gathering of appropriate secondary information; including but not limited to, USGS, NWI, county soils mapping, and aerial photography. Secondly, a site visit is made to determine if areas of concern may be present and exhibit wetland or other Waters of the United States characteristics. Some field data is gathered to make these determinations but it is not adequate for submittal to the U.S. Army Corps of Engineers or Maryland Department of the Environment for confirmation, nor are the boundaries of such areas flagged.

PROPERTY DESCRIPTION

The site is approximately 265-acres in size and is located along Shugart Valley Place in La Plata, Maryland (Figure 1). According to a preliminary site plan provided to ECS and aerial photographs, the subject site is currently undeveloped, wooded land. Proposed development of the site includes a solar power generating facility.

SECONDARY INFORMATION

Secondary Information entails the background research and review of recorded data and mapping pertaining to the project site. Resources include but are not limited to the:

- U. S. Geological Survey (USGS) Topographic Map, Indian Head Quadrangle, 2016
- U. S. Fish and Wildlife Service (USFWS), National Wetlands Inventory (NWI) Online Mapper, http://wetlands.fws.gov/mapper_tool.htm
- Natural Resources Conservation Service (NRCS), Electronic Field Office Technical Guide, Charles County Soils, www.nrcs.usda.gov/technical/efotg/
- Available aerial photography and GIS data.

The USGS Indian Head quadrangle map shows elevations ranging from approximately 130 feet above mean sea level (MSL) in the northeastern corner of the site to 50 feet above MSL in the western and southwestern areas (Figure 2). As shown on the USGS Map, the project site drains

to Wards Run, located in the northwestern portion of the site and within the Lower Potomac watershed, identified as Hydrologic Unit Code (HUC) 02070011. The NW1 map depicts freshwater forested/shrub wetlands and riverine features within the study area (Figure 3). The soil survey indicates that the site is underlain primarily by Units Bab – Beltsville silt loam, GmF – Grosstown-Marr-Hoghole complex, GWD – Grosstown-Woodstown-Beltsville complex, and Pu – Potobac-Issue complex (Figure 4). Each of these dominant soils are classified by the NRCS as hydric. Figures are included in Appendix I.

FIELD VISIT FINDINGS

A field evaluation was conducted on June 21 and 22, 2017, during which time ECS observed potentially jurisdictional Waters onsite (see Figure 5). In the north portion of the site, several small potential palustrine forested/scrub-shrub (PFO/PSS) wetlands were observed near Wards Run and the unnamed tributaries that flow into Wards Run. Small PFO/PSS wetlands were also observed throughout the site. In the eastern portion of the site, an area of potential PFO wetlands was observed forming an unnamed intermittent stream channel. In the southwestern portion of the property another large potential PFO wetland and smaller isolated areas were observed. Ephemeral stream channels drained the site primarily to the south and west. The locations of wetlands and streams appear to be governed primarily by topography with wetland areas present in low-lying topographical positions. A photographic log of site conditions is included in Appendix II.

Based on these findings, ECS recommends avoidance of these areas. Please refer to these areas as field mapping which needs to be confirmed through the Maryland Department of the Environment (MDE) site visit. We look forward to meeting with H&B Solutions and MDE to conduct the site visit to confirm the findings of this report. Please let us know when H&B Solutions and MDE are available to meet.

ECS would like to thank MD Solar 1, LLC for the opportunity to provide you with this preliminary Waters of the U.S. Determination. We look forward to assisting you further with this project and other environmental concerns you may have. If you have any questions, please feel free to contact us at any time at 703-471-8400.

Sincerely,

ECS MID-ATLANTIC, LLC



Andrew L. Young
Environmental Project Manager
AYoung@ecslimited.com



Adam M. Meurer, CHMM, PWS
Environmental Principal
AMeurer@ecslimited.com

APPENDIX I
FIGURES

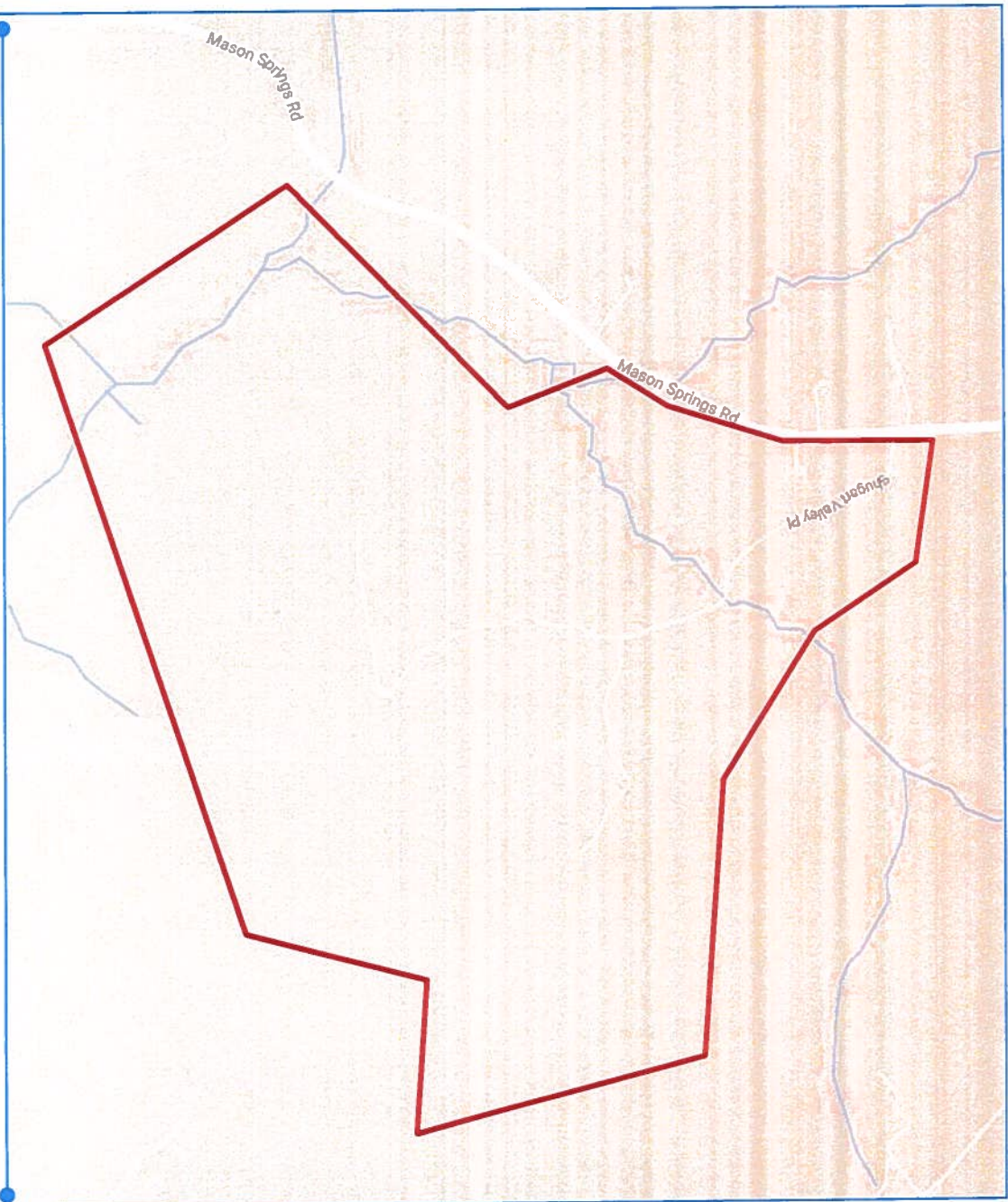
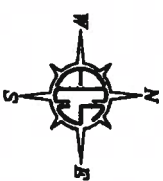


FIGURE 1: SITE LOCATION MAP
PROJECT #47:4209 — SHUGART VALLEY PLACE
CHARLES COUNTY, MARYLAND

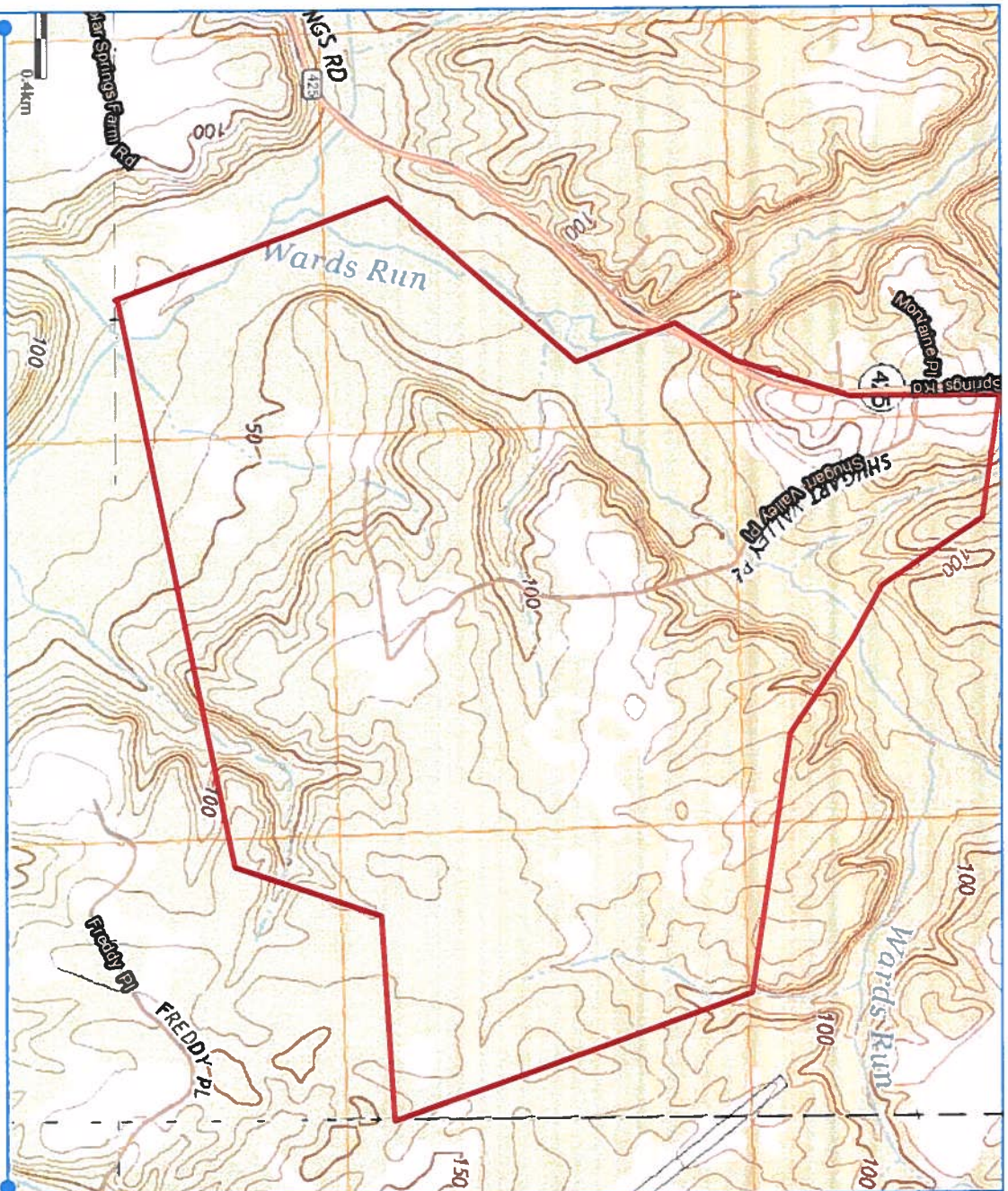


NOT TO SCALE

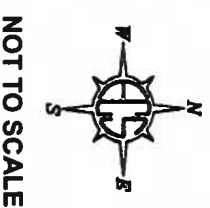
PRELIMINARY WETLAND DETERMINATION
FOR: MD SOLAR 1, LLC
JULY 2017
SOURCE: GOOGLE MAPS

ECS MID-ATLANTIC, LLC
14026 THUNDERBOLT PLACE
SUITE 100
CHANTILLY, VA 20151
703-471-8400





**FIGURE 2: USGS TOPOGRAPHIC MAP
 PROJECT #47:4209 — SHUGART VALLEY PLACE
 CHARLES COUNTY, MARYLAND**



PRELIMINARY WETLAND DETERMINATION
 FOR: MD SOLAR 1, LLC
 JULY 2017
 SOURCE: MERLIN

ECS MID-ATLANTIC, LLC
 14026 THUNDERBOLT PLACE
 SUITE 100
 CHANTILLY, VA 20151
 703-471-8400

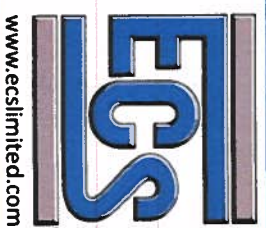




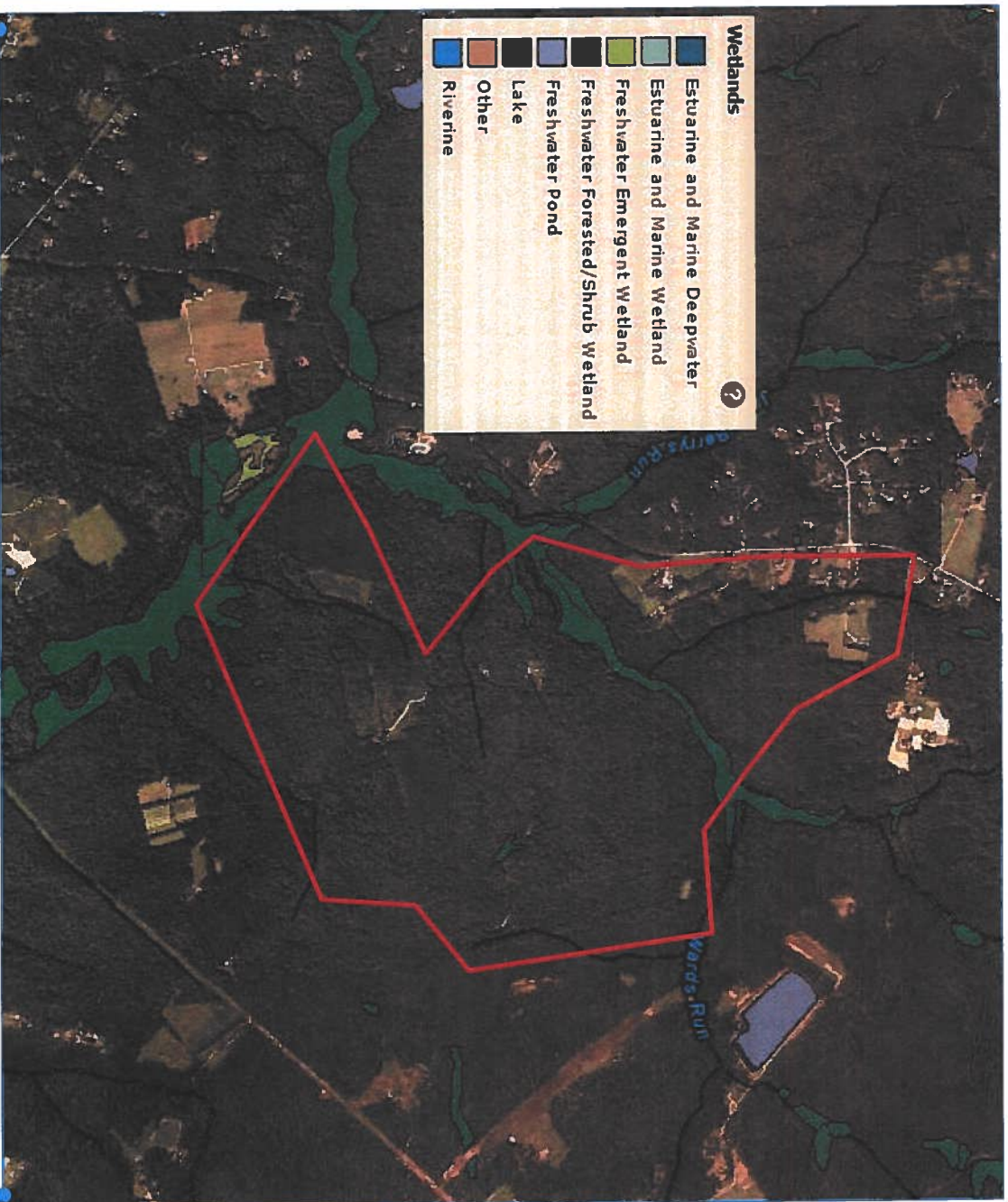
FIGURE 3: USDA SOILS MAP
PROJECT #47:4209 — SHUGART VALLEY PLACE
CHARLES COUNTY, MARYLAND



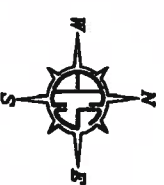
PRELIMINARY WETLAND DETERMINATION
 FOR: MD SOLAR 1, LLC
 JULY 2017
 SOURCE: NRCS WEB SOIL SURVEY

ECSS MID-ATLANTIC, LLC
 14026 THUNDERBOLT PLACE
 SUITE 100
 CHANTILLY, VA 20151
 703-471-8400





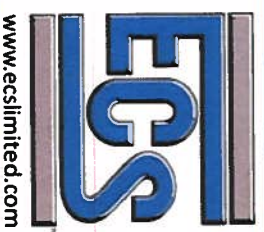
**FIGURE 4: NATIONAL WETLANDS INVENTORY MAP
PROJECT #47:4209 — SHUGART VALLEY PLACE
CHARLES COUNTY, MARYLAND**

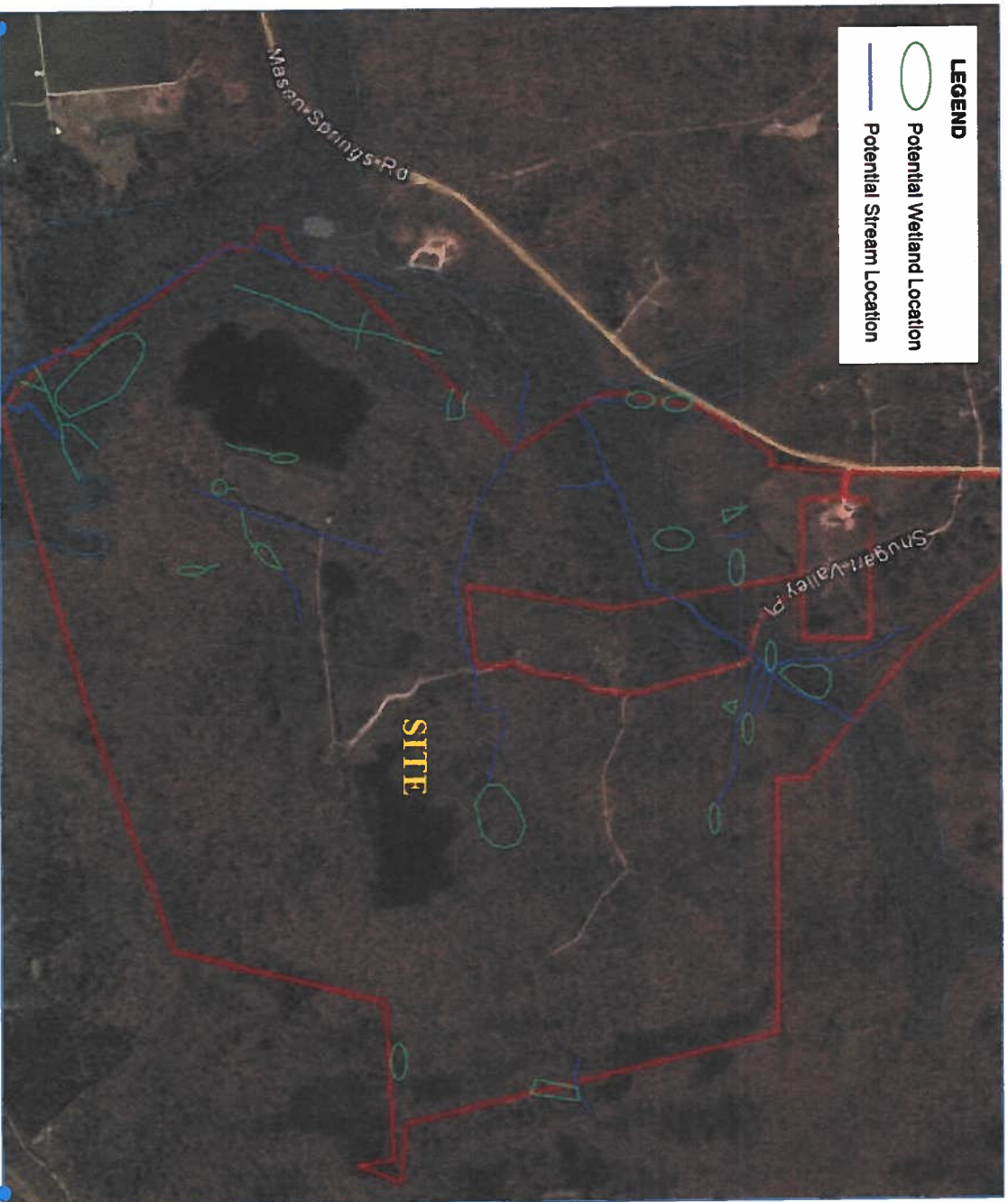


NOT TO SCALE

PRELIMINARY WETLAND DETERMINATION
FOR: MD SOLAR 1, LLC
JULY 2017
SOURCE: USFWS WETLANDS MAPPER

ECS MID-ATLANTIC, LLC
14026 THUNDERBOLT PLACE
SUITE 100
CHANTILLY, VA 20151
703-471-8400



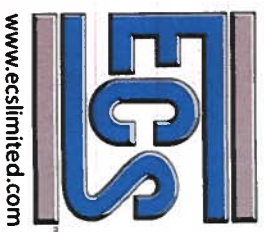


**FIGURE 5: APPROXIMATE WOUS LOCATION MAP
PROJECT #47:4209 — SHUGART VALLEY PLACE
CHARLES COUNTY, MARYLAND**



PRELIMINARY WETLAND DETERMINATION
FOR: MD SOLAR 1, LLC
JULY 2017
SOURCE: USFWS WETLANDS MAPPER

ECS MID-ATLANTIC, LLC
14026 THUNDERBOLT PLACE
SUITE 100
CHANTILLY, VA 20151
703-471-8400



APPENDIX II

PHOTOLOG



Photograph 1: View of a typical potentially jurisdictional wetland area observed within the study area limits.



Photograph 2: View of seep and channel.



Photograph 3: View of intermittent channel.



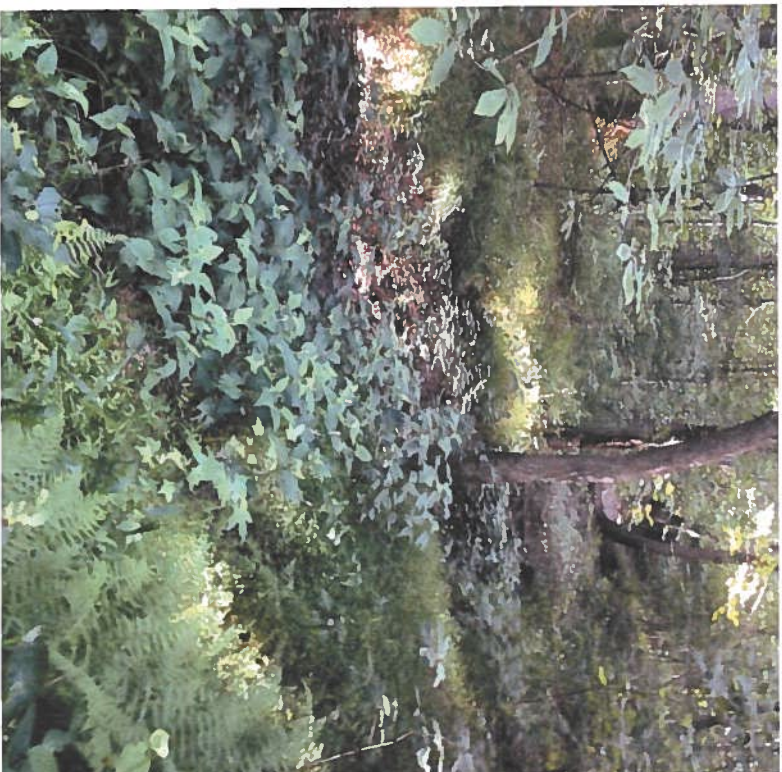
Photograph 4: View of a typical potentially jurisdictional wetland area observed within the study area limits.



Photograph 5: View of a potentially jurisdictional wetland within the study area limits.



Photograph 6: View of a potentially jurisdictional wetland within the study area limits.



Photograph 7: View of a potentially jurisdictional wetland within the study area limits.



Photograph 8: View of a potentially jurisdictional wetland within the study area limits.



**PRELIMINARY WATERS OF THE U.S. DETERMINATION REPORT
SMITHPOINT- SHUGART VALLEY PLACE UTILITY EASEMENT**

CHARLES COUNTY, MARYLAND

ECS PROJECT NO. 47: 4209-B

FOR

**MD SOLAR 1, LLC
(c/o H&B Solutions)**

FEBRUARY 2018



ECS MID-ATLANTIC, LLC

Geotechnical • Construction Materials • Environmental • Facilities

"Setting the Standard for Service"
February 16, 2018

Mr. Edwin Moses
MD Solar 1, LLC (c/o H&B Solutions)
800 Brickell Avenue, Suite 1100
Miami, Florida

ECS Project No. 47.4209-B

Reference: Preliminary Waters of the U.S. Determination, Maryland Solar Site 1 Tie-In, Josie Baylee Place, Charles County, Maryland

Dear Mr. Moses:

ECS Mid-Atlantic (ECS) is pleased to present this preliminary Waters of the U.S. Determination for the above-referenced project in general accordance with ECS Proposal No. 47.4079-EPR, dated April 5, 2017. A preliminary Waters of the U.S. Determination entails the gathering of appropriate secondary information; including but not limited to, USGS, NWI, county soils mapping, and aerial photography. Secondly, a site visit is made to determine if areas of concern may be present and exhibit wetland or other Waters of the United States characteristics. Some field data is gathered to make these determinations but it is not adequate for submittal to the U.S. Army Corps of Engineers or Maryland Department of the Environment for confirmation, nor are the boundaries of such areas flagged.

PROPERTY DESCRIPTION

The project area is a 100-foot wide corridor bisecting an approximately 100-acre property and is located along Josie Baylee Place in La Plata, Maryland (Figure 1). According to a preliminary site plan provided to ECS and aerial photographs, the subject site is currently developed with a single-family residence located on a separate included parcel and an existing power line easement, while the remainder of the site is wooded and undeveloped. Proposed development of the project area includes a utility connection between the proposed MD Solar 1 solar power generating facility and the existing power line easement/infrastructure.

SECONDARY INFORMATION

Secondary Information entails the background research and review of recorded data and mapping pertaining to the project site. Resources include but are not limited to the:

- U. S. Geological Survey (USGS) Topographic Map, Indian Head Quadrangle, 2016
- U. S. Fish and Wildlife Service (USFWS), National Wetlands Inventory (NWI) Online Mapper, http://wetlands.fws.gov/mapper_tool.htm
- Natural Resources Conservation Service (NRCS), Electronic Field Office Technical Guide, Charles County Soils, www.nrcs.usda.gov/technical/efotgl/
- Available aerial photography and GIS data.

The USGS Indian Head quadrangle map shows elevations ranging from approximately 130 feet above mean sea level (MSL) to 150 feet above MSL (Figure 2). As shown on the USGS Map, the project site drains to two unnamed tributaries of Wards Run, within the Lower Potomac watershed, identified as Hydrologic Unit Code (HUC) 02070011. The NWI map depicts freshwater forested/shrub wetlands and

riverine features within the study area (Figure 3). The soil survey indicates that the site is underlain primarily by Units BaB/C – Beltsville silt loam, GmD/F – Grosstown-Marr-Hoghole complex, GWD – Grosstown-Woodstown-Beltsville complex, LQA – Lenni and Quindocqua soils, LSA – Liverpool silt loam, and MkD – Marr-Beltsville complex (Figure 4). Of these dominant soils, all but MkD are classified by the NRCS as hydric or having hydric inclusions. Figures are included in Appendix I.

FIELD VISIT FINDINGS

A field evaluation was conducted on February 14, 2018, during which time ECS observed potentially jurisdictional Waters onsite (see Figure 5). In the northwestern portion of the site, a palustrine forested (PFO) wetland originates in a wide area of standing water and drains northeast to a confluence with a stream and PFO wetland complex that drains to the west across the northern corner of the property. These features continue to drain northwest offsite. In the central portion of the site, a palustrine scrub-shrub (PSS) wetland drains southeast to a man-made pond in the power line easement. The locations of wetlands and streams appear to be governed primarily by topography with wetland areas present in low-lying topographical positions. A photographic log of site conditions is included in Appendix II.

During the site visit, the forest stand in close proximity to the proposed utility easement was also evaluated. The forest stand consists primarily of Oak species, American Beech, and Virginia Pine trees in fair condition. The understory of the stand also contains Red Maple, Sweetgum, and American Holly. Seven specimen trees were identified onsite, none of which were located within the proposed easement.

Based on these findings, ECS recommends avoidance of the wetland areas. A portion of linear PFO crosses perpendicular to the proposed tie-in easement, which may be avoided by placing the poles outside of it and aerially crossing the wetlands and its buffer or directional drilling underneath. Please refer to these areas as field mapping which needs to be confirmed through the Maryland Department of the Environment (MDE) site visit. We look forward to meeting with H&B Solutions and MDE to conduct the site visit to confirm the findings of this report. Please let us know when H&B Solutions and MDE are available to meet.

ECS would like to thank MD Solar 1, LLC for the opportunity to provide you with this preliminary Waters of the U.S. Determination. We look forward to assisting you further with this project and other environmental concerns you may have. If you have any questions, please feel free to contact us at any time at 703-471-8400.

Sincerely,

ECS MID-ATLANTIC, LLC


Anna Allie, MEM, ISA-CA
Environmental Project Manager
AAllie@ecslimited.com


Adam M. Meurer, CHMM, PWS
Environmental Principal
AMeurer@ecslimited.com



Photograph 1 : View of a typical upland forest near the proposed easement.



Photograph 2: View of palustrine forested wetlands west of the proposed easement.



Photograph 3: View of upland forest in the northern portion of the property.



Photograph 4: View of stream in the northeast portion of the property.



Photograph 5: View of pond in the central portion of the existing easement onsite.



Photograph 6: View of PFO wetlands east of the proposed easement that drain south to the pond.

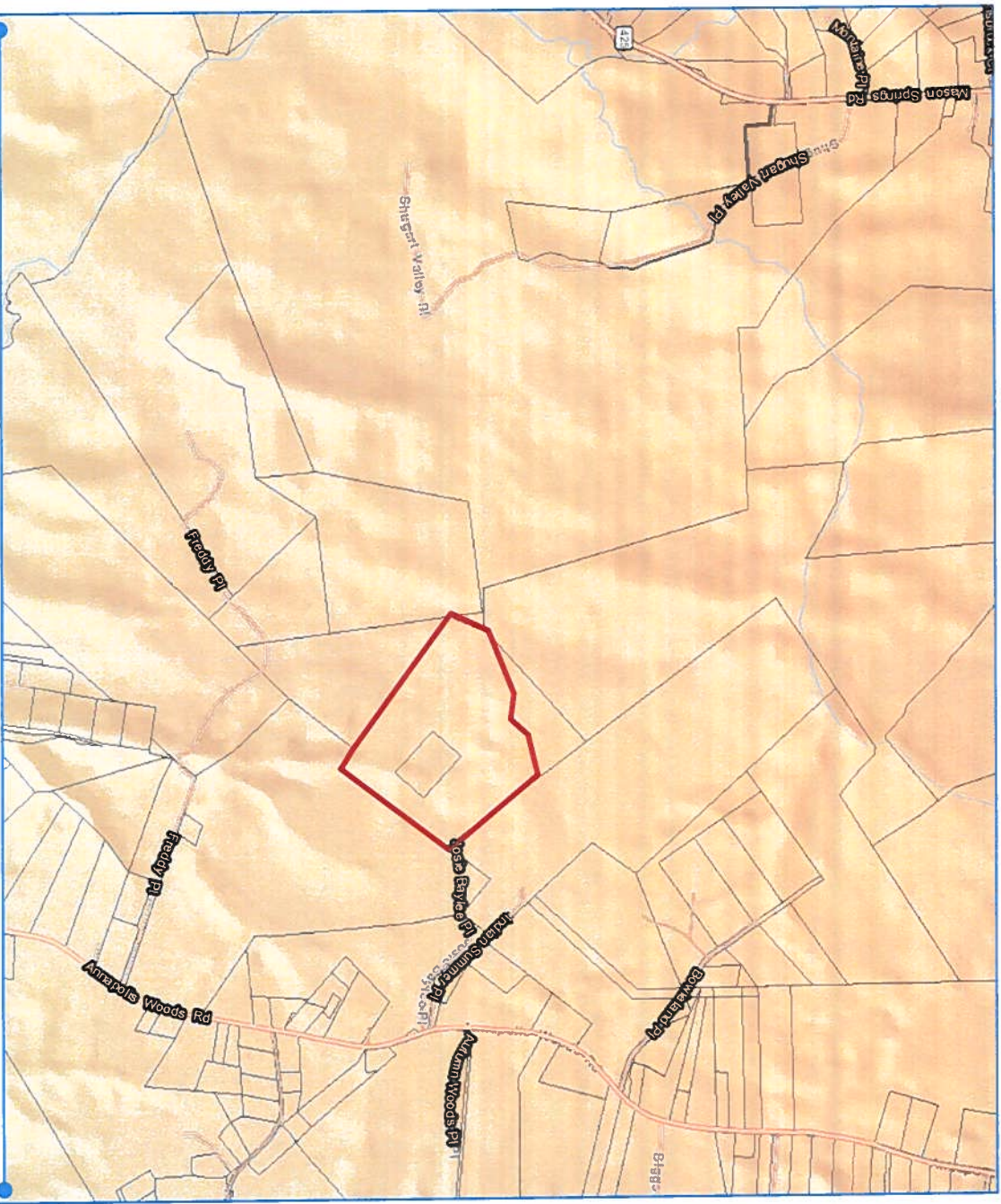
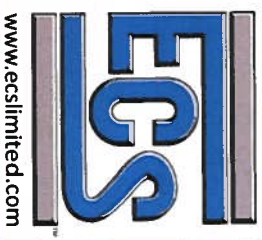


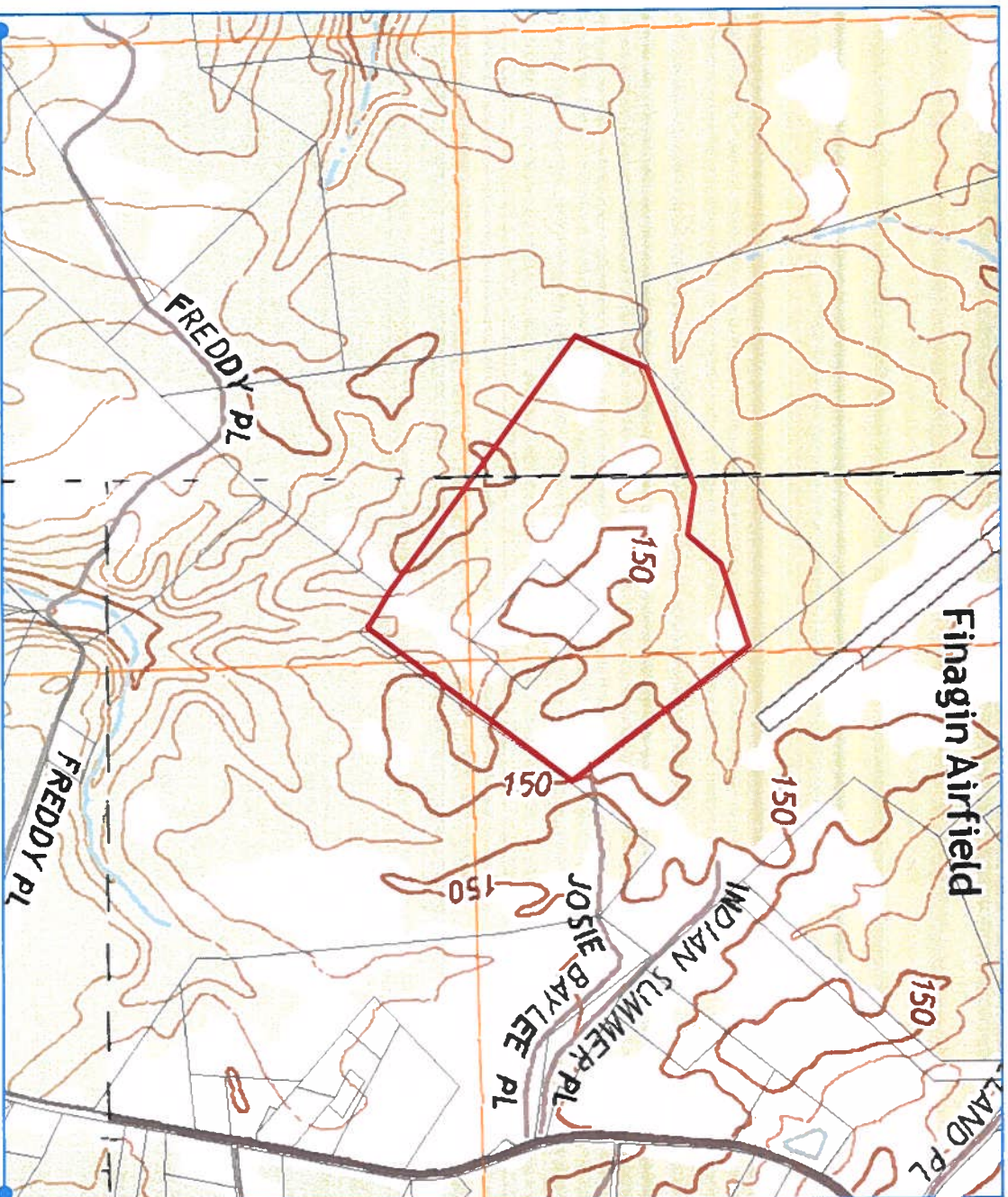
FIGURE 1: SITE LOCATION MAP
PROJECT #47:4209-B — SMITHPOINTE TIE-IN
CHARLES COUNTY, MARYLAND



PRELIMINARY WETLAND DETERMINATION
 FOR: ORIGIS ENERGY
 FEBRUARY 2018
 SOURCE: MERLIN

ECS MID-ATLANTIC, LLC
 14026 THUNDERBOLT PLACE
 SUITE 100
 CHANTILLY, VA 20151
 703-471-8400





**FIGURE 2: USGS TOPOGRAPHIC MAP
PROJECT #47:4209-B — SMITHPOINTE TIE-IN
CHARLES COUNTY, MARYLAND**

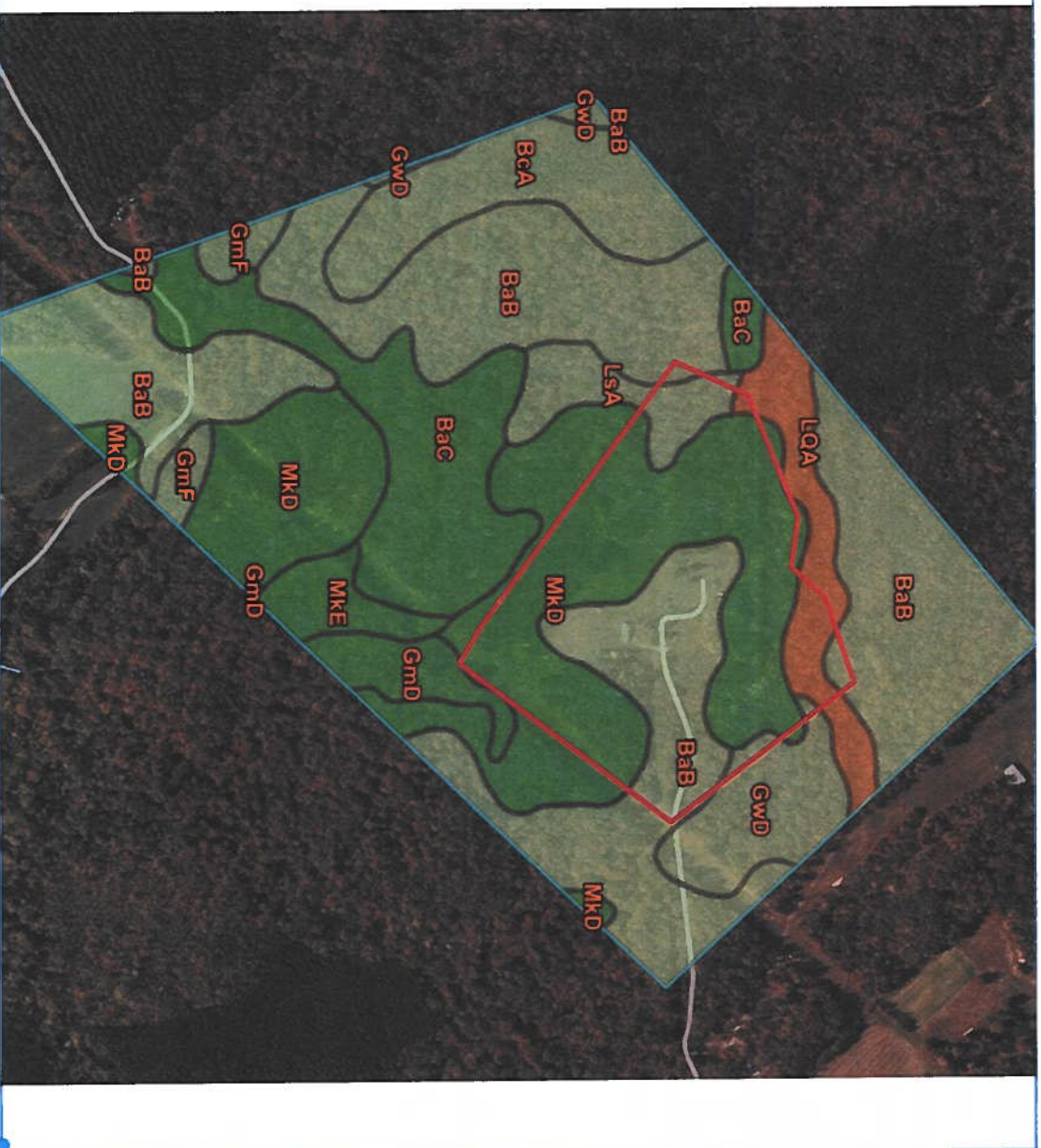


NOT TO SCALE

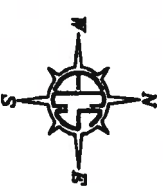
PRELIMINARY WETLAND DETERMINATION
FOR: ORIGIS ENERGY
FEBRUARY 2018
SOURCE: MERLIN

ECS MID-ATLANTIC, LLC
14026 THUNDERBOLT PLACE
SUITE 100
CHANTILLY, VA 20151
703-471-8400





**FIGURE 3: USDA SOILS MAP
PROJECT #47:4209-B — SMITHPOINTE TIE-IN
CHARLES COUNTY, MARYLAND**

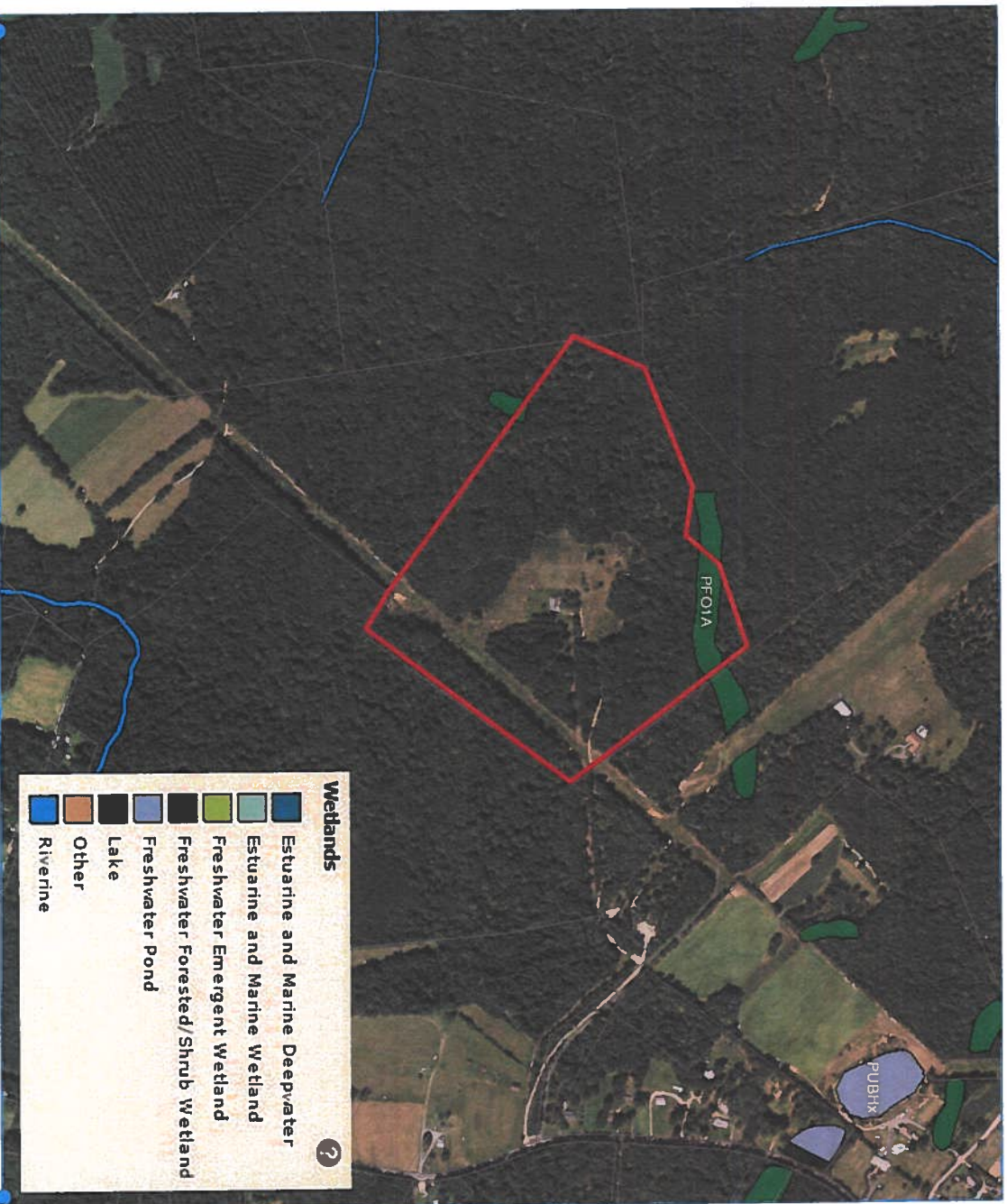


NOT TO SCALE

PRELIMINARY WETLAND DETERMINATION
FOR: ORIGIS ENERGY
FEBRUARY 2018
SOURCE: NRCS WEB SOIL SURVEY

ECS MID-ATLANTIC, LLC
14026 THUNDERBOLT PLACE
SUITE 100
CHANTILLY, VA 20151
703-471-8400



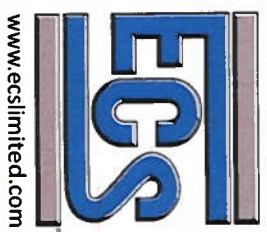


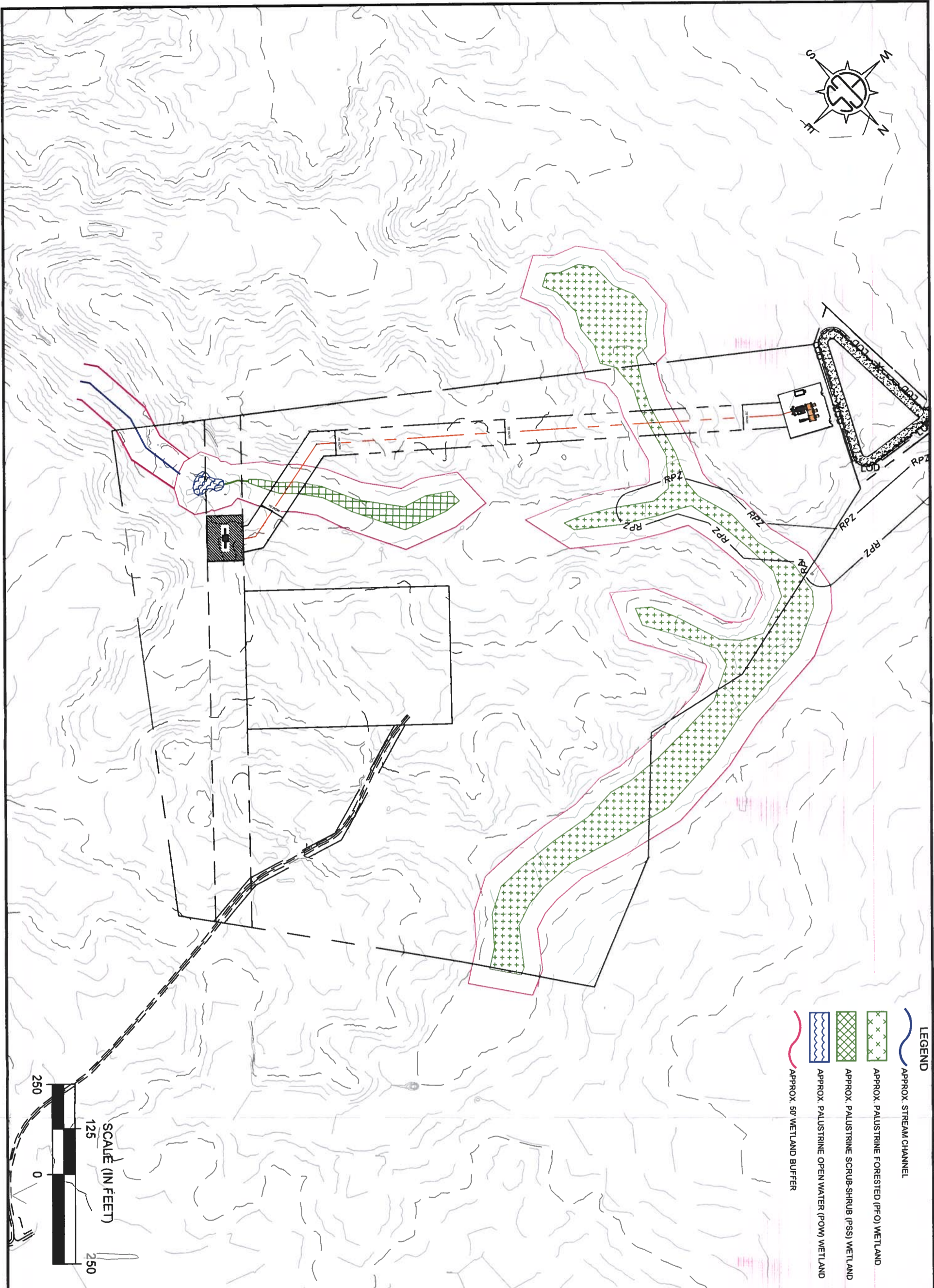
**FIGURE 4: NATIONAL WETLANDS INVENTORY MAP
PROJECT #47:4209-B — SMITHPOINTE TIE-IN
CHARLES COUNTY, MARYLAND**








PRELIMINARY WETLAND DETERMINATION
FOR: ORIGIS ENERGY
FEBRUARY 2018
SOURCE: MERLIN

ECS MID-ATLANTIC, LLC
14026 THUNDERBOLT PLACE
SUITE 100
CHANTILLY, VA 20151
703-471-8400





- LEGEND**
-  APPROX. STREAM CHANNEL
 -  APPROX. PALUSTRINE FORESTED (PFO) WETLAND
 -  APPROX. PALUSTRINE SCRUB-SHRUB (PSS) WETLAND
 -  APPROX. PALUSTRINE OPEN WATER (POW) WETLAND
 -  APPROX. 50' WETLAND BUFFER



| | |
|----------------------------------|-----------|
| WETLAND DETERMINATION MAP | |
| MD SOLAR 2, LLC | |
| ECS REVISIONS | |
| 4/23/18 AEA | |
| ENGINEER | DRAFTING |
| AEA | AEA |
| SCALE | 1" ~ 250' |
| PROJECT NO. | 47-4209-D |
| SHEET | 1 OF 1 |
| DATE | 3/28/18 |



SMITHPOINTE PARCEL
LA PLATA, MD
CHARLES COUNTY



ECS MID-ATLANTIC, LLC

Geotechnical • Construction Materials • Environmental • Facilities

"Setting the Standard for Service"

September 5, 2018

Mr. Jason Thomas
MD Solar 1, LLC (c/o H&B Solutions)
800 Brickell Avenue
Suite 1100
Miami, Florida

ECS Project No. 47.4209

Reference: Preliminary Waters of the U.S. Determination, Maryland Solar Site 1 Bridge Replacement, Shugart Valley Place, Charles County, Maryland

Dear Mr. Thomas:

ECS Mid-Atlantic (ECS) is pleased to present this Preliminary Waters of the U.S. Determination for the above-referenced project in general accordance with ECS Proposal No. 47.4079-EPR, dated April 5, 2017. A Preliminary Waters of the U.S. Determination entails the gathering of appropriate secondary information; including but not limited to, USGS, NWI, county soils mapping, and aerial photography. Secondly, a site visit is made to determine if areas of concern may be present and exhibit wetland or other Waters of the United States characteristics. Some field data is gathered to make these determinations but it is not adequate for submittal to the U.S. Army Corps of Engineers or Maryland Department of the Environment for confirmation, nor are the boundaries of such areas flagged.

PROPERTY DESCRIPTION

The total site is approximately 540-acres in size and is located along Shugart Valley Place in La Plata, Maryland. ECS has previously evaluated the site for the presence of wetlands and waters in July 2017. Proposed development of the site includes a solar power generating facility. An additional offsite area totaling approximately 1.5 acres around an existing road bridge and foot bridge was evaluated for the purpose of determining the optimal placement of a new bridge structure to maintain property access. This Preliminary Waters of the U.S. Determination focuses solely on this 1.5 acre study area as the remaining +/- 539 acres were previously delineated.

FIELD VISIT FINDINGS

A field evaluation was conducted on August 9, 2018, during which time ECS observed potentially jurisdictional Waters onsite. To the north of the existing bridge, several small potential palustrine forested (PFO) wetlands were observed adjacent to Wards Run, a mapped perennial stream. To the south of the existing bridge, near the existing wooden foot bridge, the stream banks were several feet higher and no areas we would consider wetlands were observed. The locations of wetlands and streams appear to be governed primarily by topography with wetland areas present in low-lying topographical positions. A photographic log of site conditions is attached.

Based on these findings, ECS recommends avoidance of the wetlands north of the existing bridge and placement of the bridge in the location of the existing foot bridge if feasible.

ECS would like to thank MD Solar 1, LLC for the opportunity to provide you with this Preliminary Waters of the U.S. Determination. We look forward to assisting you further with this project and other environmental concerns you may have. If you have any questions, please feel free to contact us at any time at 703-471-8400.

Sincerely,

ECS MID-ATLANTIC, LLC

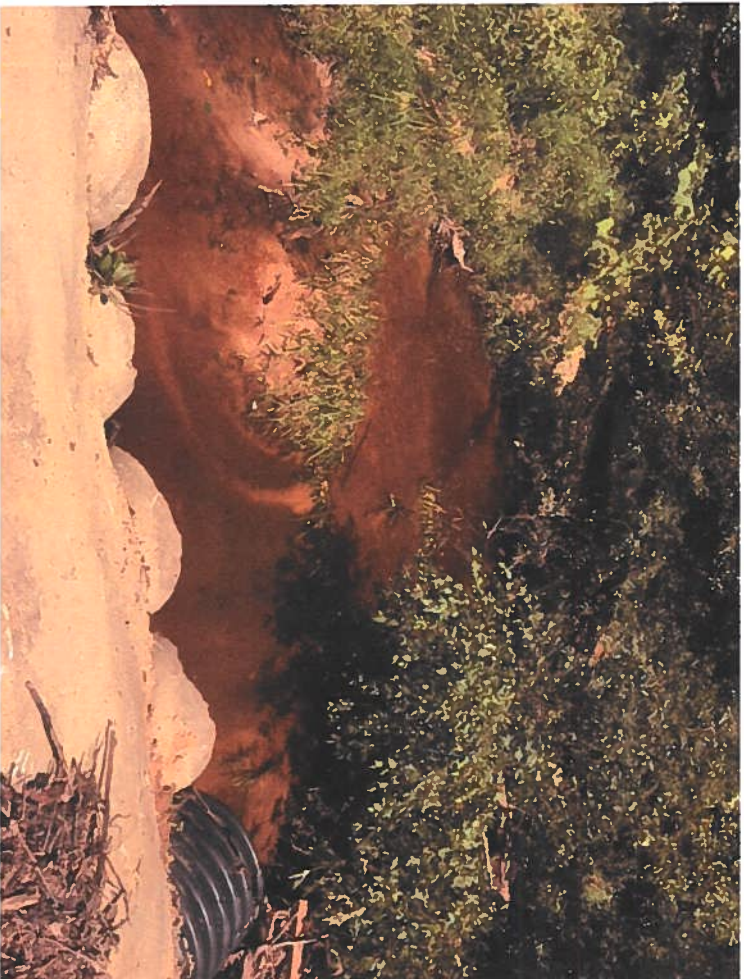

Anna Allie, MEM, ISA-CA
Environmental Project Manager
AAllie@ecslimited.com


Adam M. Meurer, CHMM, PWS
Principal
AMeurer@ecslimited.com

\\S47-ARESS2K6\data_e-projects\4200-4299\4209 MD Solar 1 Shugart Valley Nat Res\permitting\attachments\Shugart Bridge Preliminary Wetlands Letter.doc

Attachment 1 – Site Photographs

SITE PHOTOGRAPHS



Photograph 1: View to the north from the existing bridge.



Photograph 2: View to the south from the existing bridge.

SITE PHOTOGRAPHS

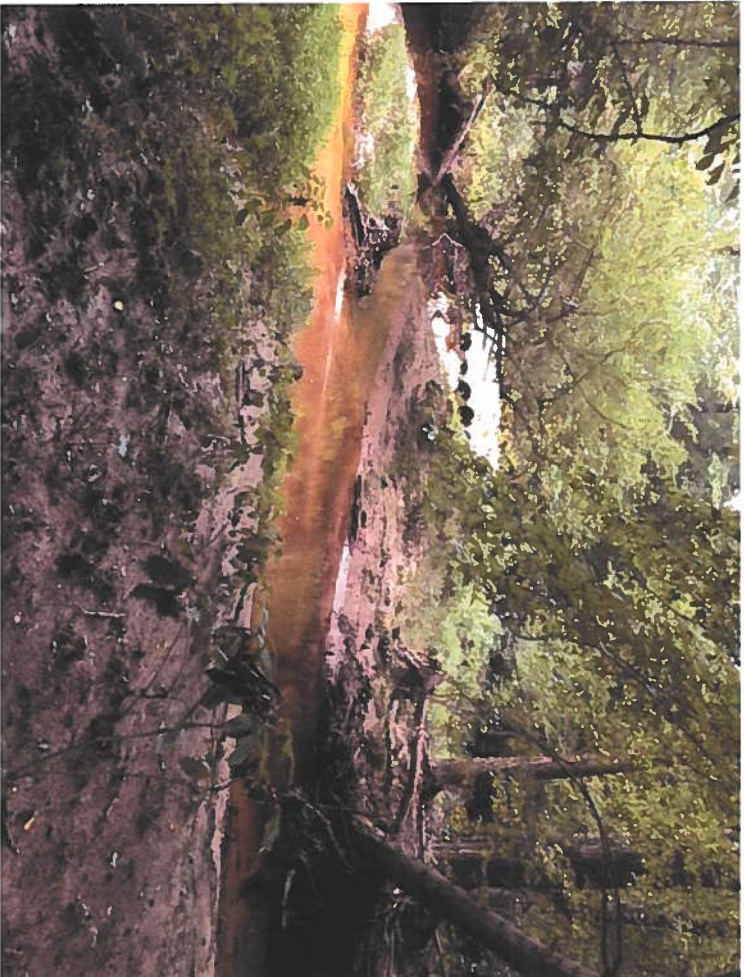


Photograph 3: View to the west of the existing foot bridge.



Photograph 4: View to the south of uplands near the existing foot bridge.

SITE PHOTOGRAPHS



Photograph 5: View to the south of the wetlands north of the existing bridge.



Photograph 6: View to the east of wetlands draining to Wards Run north of the existing bridge.

MEMORANDUM

To: Dane Bauer/Melissa Hall;

From: Jeff Thompson, Central Region Chief
Maryland Department of the Environment/Nontidal Wetlands Division

Date: September 11, 2017

Re: Shugart Valley Place, LaPlata, Charles Co., Maryland

The Maryland Department of the Environment, Nontidal Wetlands Division has reviewed the project limits of disturbance and nontidal wetlands noted for a proposed solar facility at the subject location. The Department is in agreement with the wetlands locations and that the location of the solar panels and the associated infrastructure will have no impacts to jurisdictional areas of the State, including regulated 25 foot buffer areas. It should also be noted that the project is located within a two Tier II watersheds and water quality should be of prime importance in planning and construction of this project.

If this project does not disturb wetlands or wetland buffers, then no authorization from this office is necessary. If it is determined that as a result of the grid connection or any associated infrastructure that there will be impacts to any regulated resources an authorization will be required and a JPA will need to be submitted.

It is our desire to see that these types of projects can take place without sacrificing any wetland functions that might exist on potential sites within the region. The Department is pleased that these specific projects have been designed to avoid such wetland losses. If I can be of further assistance, please feel free to contact me at Jeffrey.thompson@maryland.gov or at 443-463-9850.



PROJECT REVIEW FORM

Request for Comments from the Maryland Historical Trust
MDSHPO on State and Federal Undertakings

MHT USE ONLY
Date Received: 6/29/17
Log Number: PSC NSL/DLN 20170359-7

Project Name MD Solar 1, LLC County Charles

Primary Contact:

Contact Name Dane Bauer Company/Agency H&B Solutions, LLC
Mailing Address 37534 Oliver Dr.
City Selbyville State Delaware Zip 19975
Email dbauer@hallandbauer.com Phone Number +1 (410) 812-9109 Ext.

Project Location:

Address 4850 Shugart valley Place (see cover letter for TM/Parcel info) City/Vicinity Nanjemoy
Coordinates (if known): Latitude 38.30238 Longitude 77.08221 Waterway Nanjemoy

Project Description:

| List federal and state sources of funding, permits, or other assistance (e.g. Bond Bill Loan of 2013, Chapter #; HUD/ CDBG; MDE/COE permit; etc.). | Agency Type | Agency/Program/Permit Name | Project/Permit/Tracking Number (if applicable) |
|--|-------------|----------------------------|--|
| | <u>S</u> | <u>PSC</u> | |

This project includes (check all applicable): New Construction Demolition Remodeling/Rehabilitation
 State or Federal Rehabilitation Tax Credits Excavation/Ground Disturbance Shoreline/Waterways/Wetlands
Other\Additional Description: 32.5 MW solar project consisting of ballasts, posts, racks, panels, inverters, and switch gear.

Known Historic Properties:

This project involves properties (check all applicable): Listed in the National Register Subject to an easement held by MHT
 Included in the Maryland Inventory of Historic Properties Designated historic by a local government
 Previously subject to archaeological investigations
Property\District\Report Name Unimproved wooded property.

Attachments:

All attachments are required. Incomplete submittals may result in delays or be returned without comment.
 Aerial photograph or USGS Quad Map section with location and boundaries of project clearly marked.
 Project Description, Scope of Work, Site Plan, and/or Construction Drawings.
 Photographs (print or digital) showing the project site including images of all buildings and structures.
 Description of past and present land uses in project area (wooded, mined, developed, agricultural uses, etc.).

MHT Determination:

There are **NO HISTORIC PROPERTIES** in the area of potential effect The project will have **NO ADVERSE EFFECT WITH CONDITIONS**
 The project will have **NO EFFECT** on historic properties The project will have **ADVERSE EFFECTS** on historic properties
 The project will have **NO ADVERSE EFFECT** on historic properties **MHT REQUESTS ADDITIONAL INFORMATION**
MHT Reviewer: Dane Bauer Date: 7/19/17

Submit printed copy of form and all attachments by mail to: Beth Cole, MHT, 100 Community Place, Crownsville, MD 21032

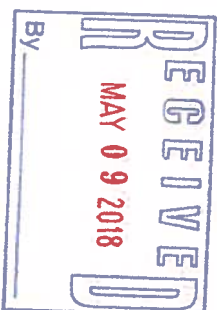
NSL
1/26/14/17
Aspen
7/19/17



H&B Solutions, LLC
37534 Oliver Drive
Selbyville, DE 19975
Tel: 410.292.4385

201802427

May 7, 2018



NSL/DCM

Maryland Historical Trust
100 Community Place
Crownsville, MD 21032

Attn: Ms. Dixie Henry

Re: MD Solar 1, LLC
Shugart Valley Place Solar Project
Addition of SmithPointe Parcel
Tax Map 42, Parcel 188
Project No: 17004.00

CHC

Dear Ms. Henry:

Since we last communicated with you on the MD Solar 1 - Shugart Valley Place Solar Project, the Applicant has added a parcel needed for the SMECO substation interconnection. Tax Map 42, Parcel 188 will be used for minor clearing to accommodate an overhead line interconnection to a new SMECO substation on the same parcel as shown on the enclosed schematic.

Could you please review this additional area and let us know if there are concerns associated with any Historic Properties. We assume since it is an adjacent parcel to the original MD Solar 1 site, that the MHT comments will be similar.

Thank you for your consideration in these regards. You may contact me at the below address, using my email (dbauer@hallandbauer.com), or on my cell 410.812.9109.

Sincerely,

H&B Solutions, LLC

Handwritten signature

Dane S. Bauer
Member

Enclosures

The Maryland Historical Trust has determined that there are no historic properties affected by this undertaking.

Beth Cole
Date 4/6/2018

2017-03597
See 2017-0367
NSL
1A
6/6/18

1A See 6/6/18

MD SOLAR 1, LLC – SHUGART VALLEY PROJECT ADJACENT PROPERTY OWNERS

| Contacts | Description | Address or Parcel ID |
|---------------------------|---|--|
| Jerry & Maria Stewart | They live in the second out parcel as you drive onto the Shugart property from Mason Springs. | Parcel Id: 0902013169 4975 Shugart Valley Pl, La Plata, MD 20646 |
| Michael & Stephanie Smith | They live in the third out parcel, the one furthest into the interior of the property and immediately south of Jerry Stewart. | Parcel Id: 0902012782 5005 Shugart Valley Pl, La Plata, MD 20646 |
| Zadmer Enterprises | south of our site | Parcel Id: 0902006677 |
| William Bowie | east of our site. | Parcel Id: 0902001845 |
| Charles Ward | southeast of our site | Parcel Id: 0902002698 |
| Cliff Jennings | south of our site | Parcel Id: 0902002825 |
| Benjamin H. Walz | south of our site | Parcel Id: 0902004658 5490 Freddy Place, La Plata, MD 20646 |
| Smith Pointe LLC | east of our site | Parcel Id: 0902001543 |
| Linda Bourne | south of our site | Parcel Id: 0902000334 |
| Linda & Wayne Buffalo | They live in the first out parcels that we come to as we drive into the Shugart property from Mason Springs. Shugart valley Place Road crosses over their out parcel. | Parcel Id: 0902011808 7250 Mason Springs Road, La Plata, MD 20646 |