



Legend

-  Limits of Disturbance
-  County Boundary

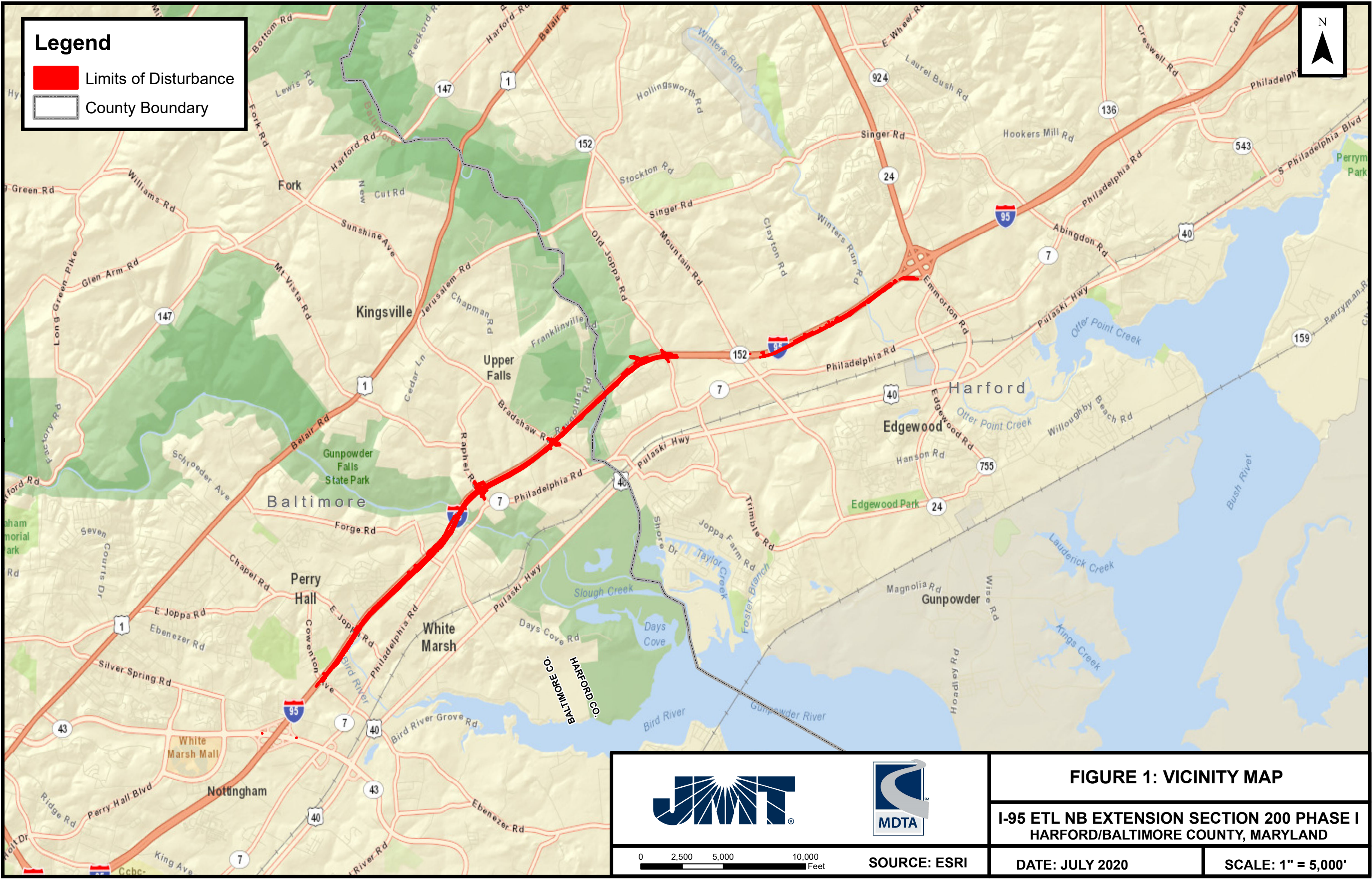
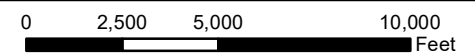


FIGURE 1: VICINITY MAP

**I-95 ETL NB EXTENSION SECTION 200 PHASE I
HARFORD/BALTIMORE COUNTY, MARYLAND**

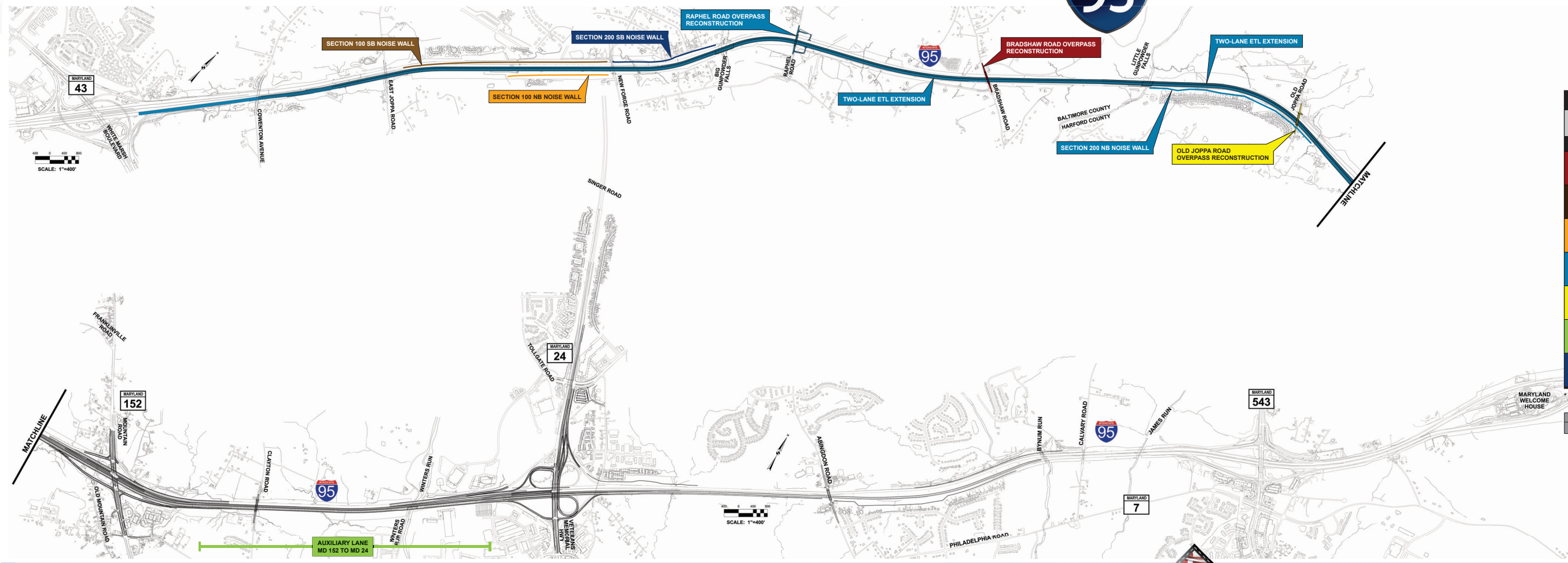


SOURCE: ESRI

DATE: JULY 2020

SCALE: 1" = 5,000'

I-95 EXPRESS TOLL LANES (ETL) NORTHBOUND EXTENSION



IMPLEMENTATION SEQUENCE		
CONTRACT		ANTICIPATED CONSTRUCTION SCHEDULE
PHASE I		
KH-3012	BRADSHAW ROAD OVERPASS RECONSTRUCTION	COMPLETED
KH-3013	SECTION 100 SB NOISE WALL	COMPLETED
KH-3016	SECTION 100 NB NOISE WALL	COMPLETED
KH-3009	I-95 NB TWO-LANE ETL EXTENSION TO MD 152 RAPHEL ROAD OVERPASS RECONSTRUCTION SECTION 200 NB NOISE WALL	SPRING 2021 – SPRING 2024
KH-3015	OLD JOPPA ROAD OVERPASS RECONSTRUCTION	WINTER 2019/20 – FALL 2020
KH-3010	I-95 NB AUXILIARY LANE MD 152 TO MD 24 MODIFY MD 24/MD 924 RAMP	SPRING 2019 – WINTER 2020/21
KH-3014	SECTION 200 SB NOISE WALL	WINTER 2020/21 – SPRING 2022

* Construction Advertisement dates and Schedule are anticipated and subject to change

CONTRACTS BY OTHERS		
LEVEL 3 RELOCATION	BGE UTILITY RELOCATION	VERIZON UTILITY RELOCATION



Figure 2

Legend

- Proposed Mitigation Sites
- Limits of Disturbance
- County Boundary

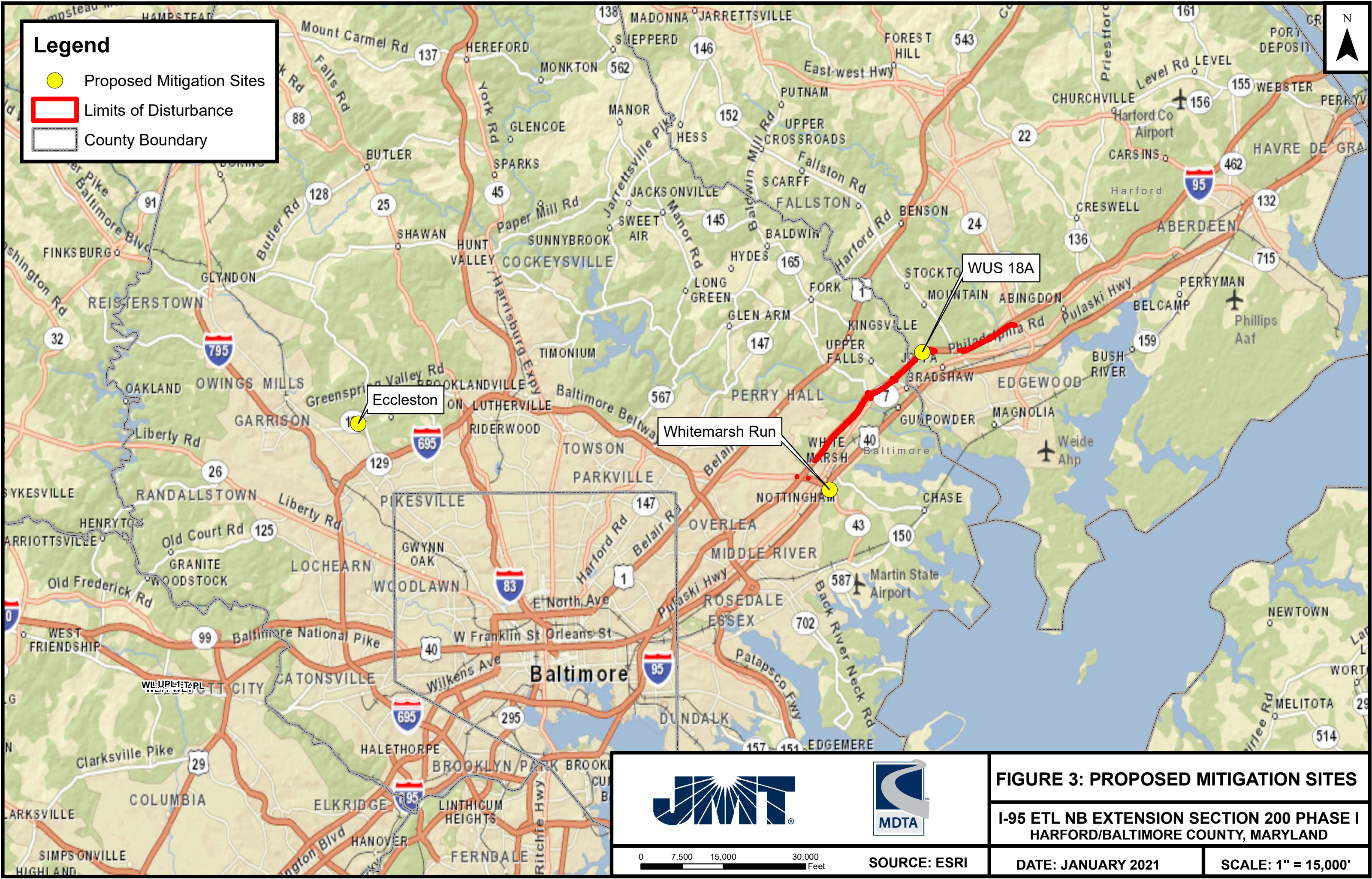
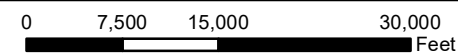


FIGURE 3: PROPOSED MITIGATION SITES

**I-95 ETL NB EXTENSION SECTION 200 PHASE I
HARFORD/BALTIMORE COUNTY, MARYLAND**





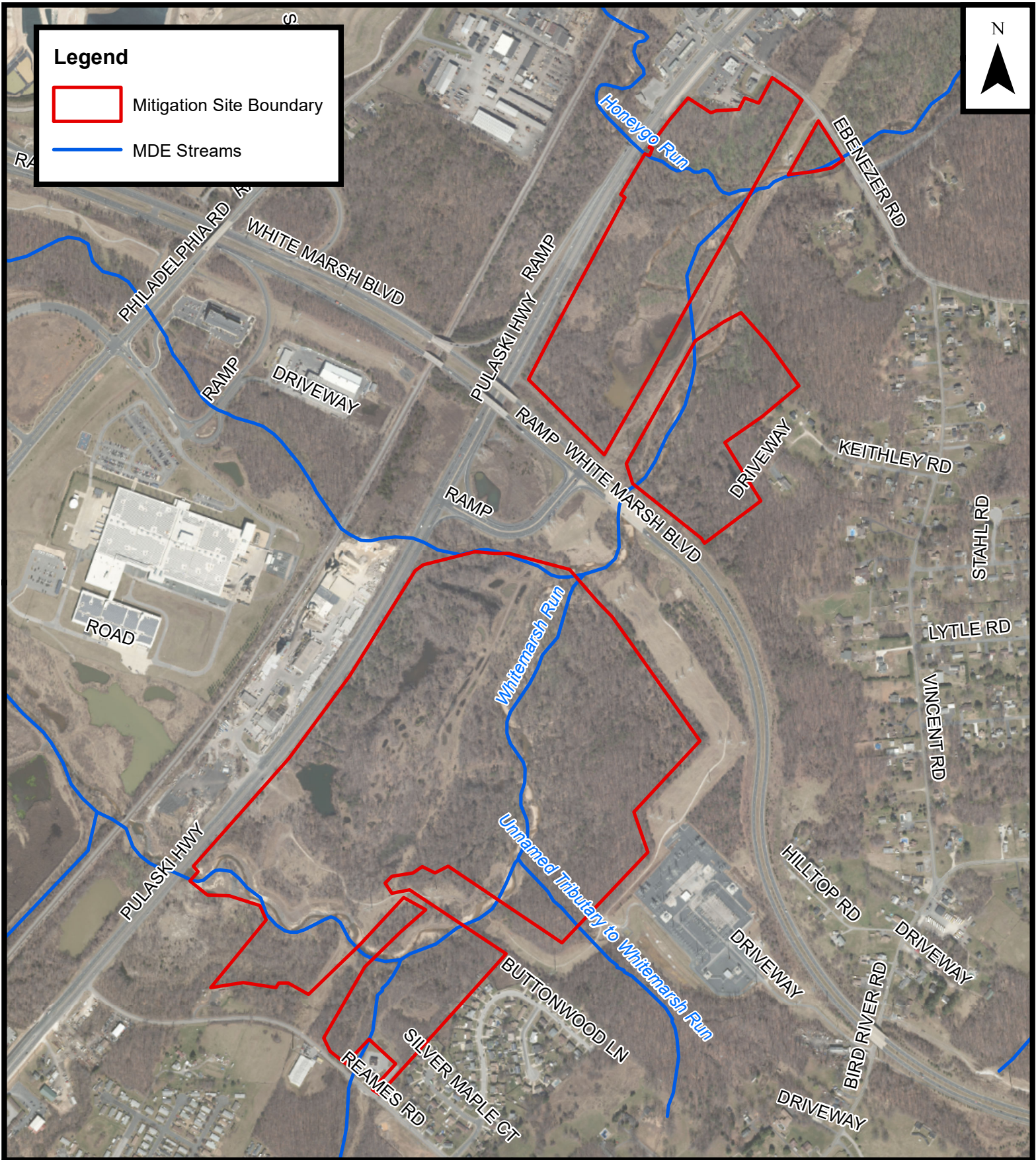
SOURCE: ESRI

DATE: JANUARY 2021

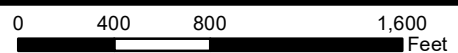
SCALE: 1" = 15,000'

Legend

-  Mitigation Site Boundary
-  MDE Streams



**FIGURE 4: WHITEMARSH RUN
MITIGATION SITE
I-95 ETL NB EXTENSION
SECTION 200 PHASE I
HARFORD/BALTIMORE COUNTY, MARYLAND**





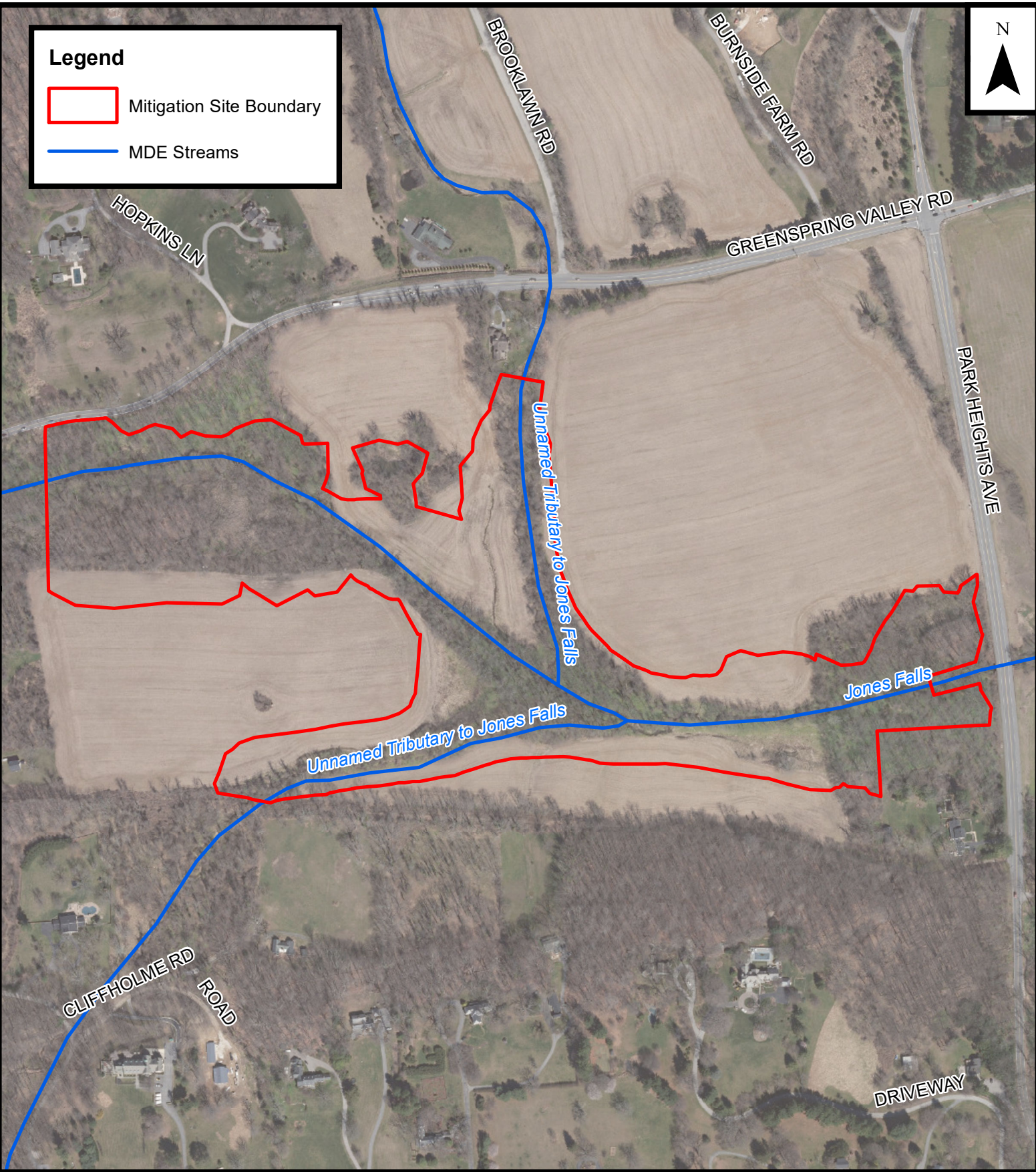
SOURCE: ESRI

DATE: JULY 2020

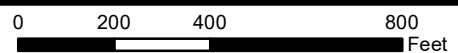
SCALE: 1" = 800'

Legend

-  Mitigation Site Boundary
-  MDE Streams



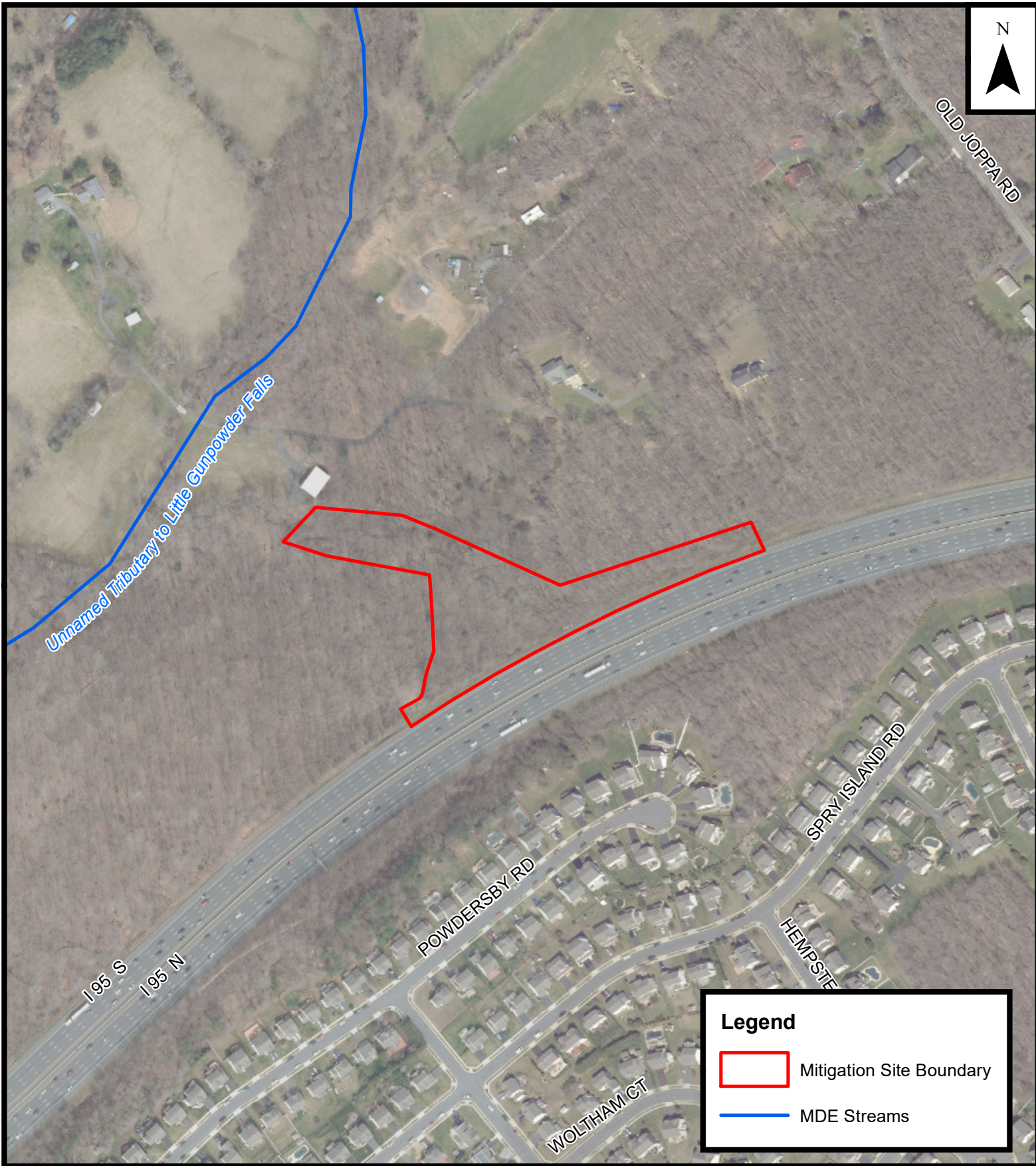
**FIGURE 5: ECCLESTON
MITIGATION SITE
I-95 ETL NB EXTENSION
SECTION 200 PHASE I
HARFORD/BALTIMORE COUNTY, MARYLAND**



SOURCE: ESRI

DATE: JULY 2020

SCALE: 1" = 400'



Legend



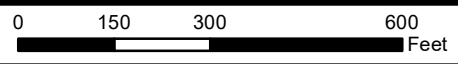
-  Mitigation Site Boundary
-  MDE Streams



FIGURE 6: WUS 18A MITIGATION SITE

**I-95 ETL NB EXTENSION
SECTION 200 PHASE I
HARFORD/BALTIMORE COUNTY, MARYLAND**



SOURCE: ESRI

DATE: JULY 2020

SCALE: 1" = 300'