



**COE FIELD REVIEW**

**SECTION 200:  
I-95, NORTH OF MD 43 TO NORTH OF MD 22**

JOHN F. KENNEDY MEMORIAL HIGHWAY  
BALTIMORE & HARFORD COUNTIES  
**WETLAND DELINEATION MAP**

CONTRACT NO.  
DRAWING NO.  
**KEY MAP E**  
SHEET NO.  
OF

ADDENDUMS & REVISIONS			
NO.	DESCRIPTION	BY	DATE

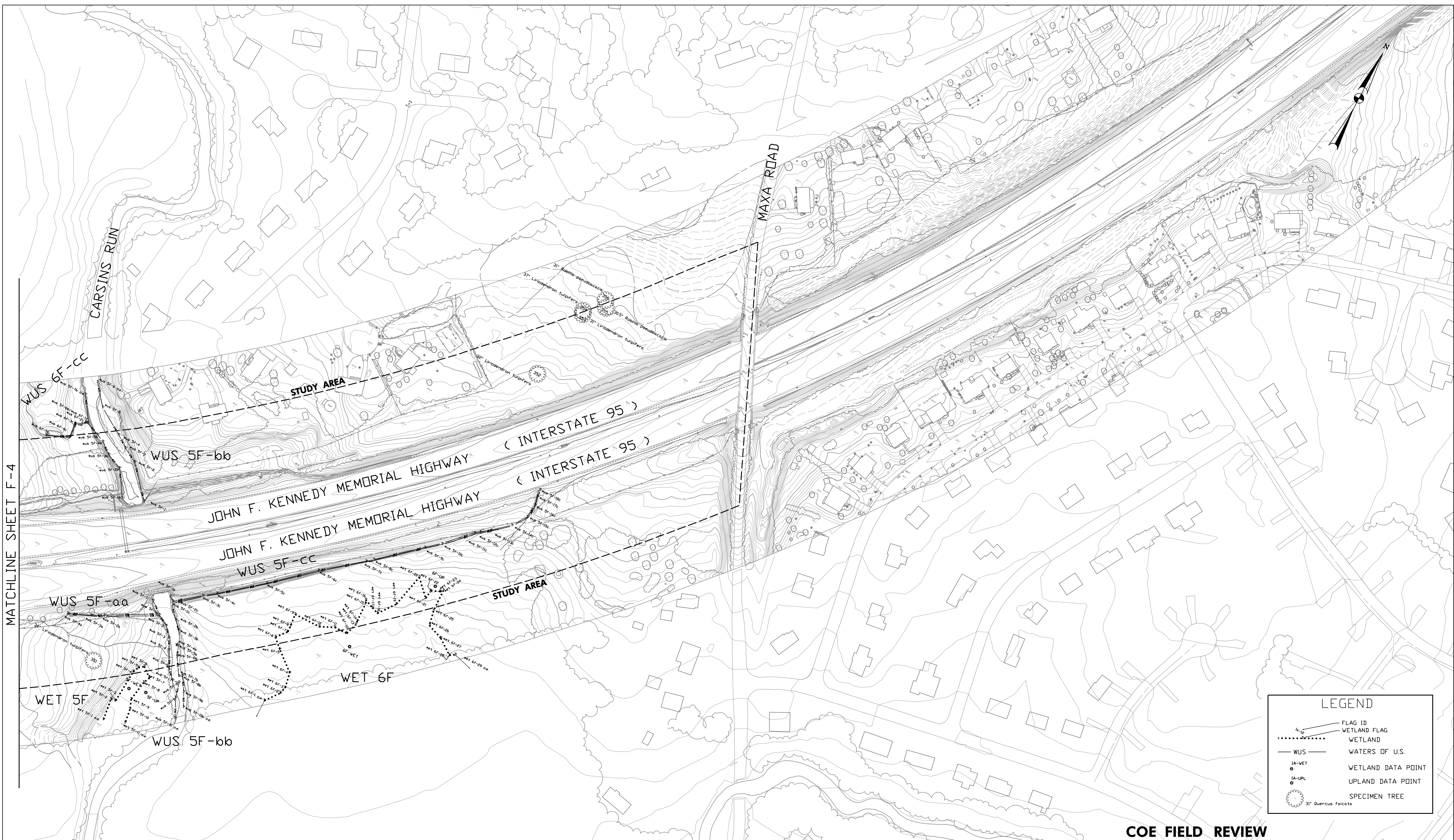
DESIGNED BY \_\_\_\_\_ DRAWN BY \_\_\_\_\_ CHECKED BY \_\_\_\_\_  
 CONST. REVIEW BY \_\_\_\_\_ DATE AUGUST, 2006 SCALE 1" = 1000'

Q:\SMD\303447\_03195Sec200ENV.PL\CADD\section E\JD.KEYmap.E.dgn

**JOHNSON, MIRMIRAN & THOMPSON**  
Engineering A Brighter Future®  
72 Loveton Circle Baltimore, Maryland 21152-0949

**MARYLAND TRANSPORTATION AUTHORITY**  
Engineering Division





MATCHLINE SHEET F-4

LEGEND	
	FLAG ID
	WETLAND FLAG
	WETLAND
	WATERS OF U.S.
	WETLAND DATA POINT
	UPLAND DATA POINT
	SPECIMEN TREE
	31' Quercus falcata

**COE FIELD REVIEW**

**JOHNSON, MIRMIRAN & THOMPSON**  
Engineering A Brighter Future®  
72 Loveton Circle Baltimore, Maryland 21152-0949

**MARYLAND TRANSPORTATION AUTHORITY**  
Engineering Division

ADDENDUMS & REVISIONS			
NO.	DESCRIPTION	BY	DATE

**SECTION 200:**  
**I-95, NORTH OF MD 43 TO NORTH OF MD 22**  
JOHN F. KENNEDY MEMORIAL HIGHWAY  
BALTIMORE & HARFORD COUNTIES  
**WETLAND DELINEATION MAP**

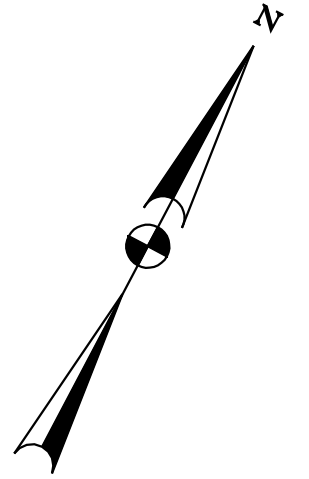
DESIGNED BY _____	DRAWN BY _____	CHECKED BY _____
CONST. REVIEW BY _____	DATE AUGUST, 2006	SCALE 1" = 100'

CONTRACT NO.
DRAWING NO.
<b>F-5</b>
SHEET NO.
OF

Q:\SMD\303447.03\95Sec200ENV.PL\CADD\section F\JD\_map.5f.dgn

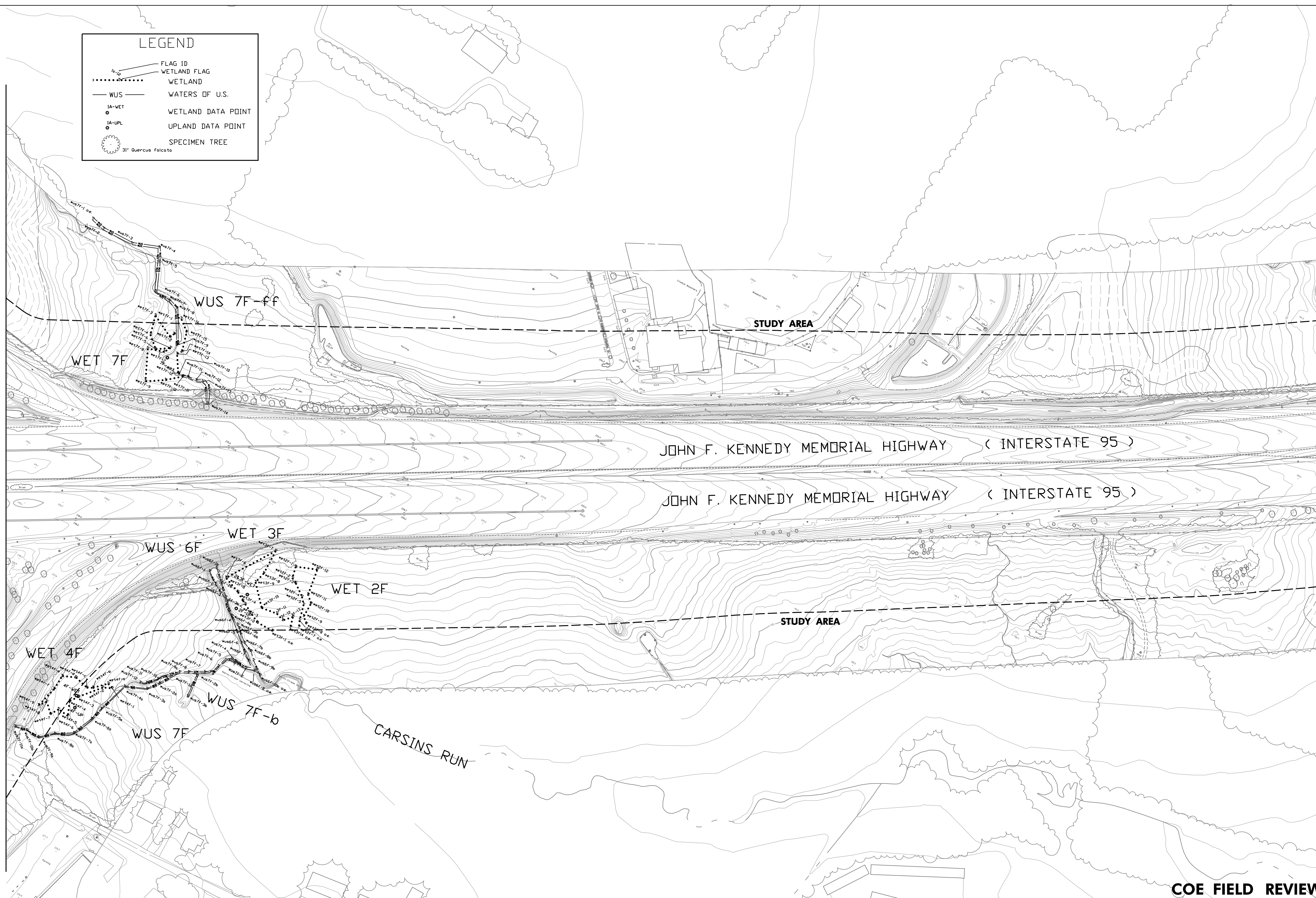


LEGEND	
	FLAG ID
	WETLAND FLAG
	WETLAND
	WATERS OF U.S.
	WETLAND DATA POINT
	UPLAND DATA POINT
	SPECIMEN TREE
	31' Quercus Falcata



MATCHLINE SHEET F-3

MATCHLINE SHEET F-5



**COE FIELD REVIEW**

**JOHNSON, MIRMIRAN & THOMPSON**  
*Engineering A Brighter Future®*  
 72 Loveton Circle Baltimore, Maryland 21152-0949

**MARYLAND TRANSPORTATION AUTHORITY**  
*Engineering Division*

ADDENDUMS & REVISIONS			
NO.	DESCRIPTION	BY	DATE

**SECTION 200:**  
**I-95, NORTH OF MD 43 TO NORTH OF MD 22**  
 JOHN F. KENNEDY MEMORIAL HIGHWAY  
 BALTIMORE & HARFORD COUNTIES  
**WETLAND DELINEATION MAP**

DESIGNED BY \_\_\_\_\_ DRAWN BY \_\_\_\_\_ CHECKED BY \_\_\_\_\_  
 CONST. REVIEW BY \_\_\_\_\_ DATE AUGUST, 2006 SCALE 1" = 100'

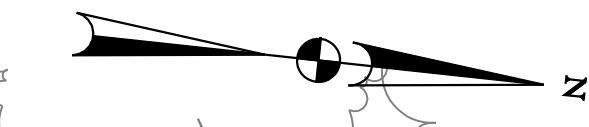
CONTRACT NO.
DRAWING NO. <b>F-4</b>
SHEET NO. OF

Q:\SMD\303447\_03195Sec200ENV\_PL\CADD\section F\JD\_map\_4F.dgn



MATCHLINE SHEET F-2

MATCHLINE SHEET F-2



MATCHLINE SHEET F-4

LEGEND	
	FLAG ID
	WETLAND FLAG
	WETLAND
	WATERS OF U.S.
	WETLAND DATA POINT
	UPLAND DATA POINT
	SPECIMEN TREE
	31' Quercus Falcata

**COE FIELD REVIEW**

**SECTION 200:  
I-95, NORTH OF MD 43 TO NORTH OF MD 22**

JOHN F. KENNEDY MEMORIAL HIGHWAY  
BALTIMORE & HARFORD COUNTIES  
**WETLAND DELINEATION MAP**

CONTRACT NO.

DRAWING NO.

**F-3**

SHEET NO.

OF

ADDENDUMS & REVISIONS			
NO.	DESCRIPTION	BY	DATE

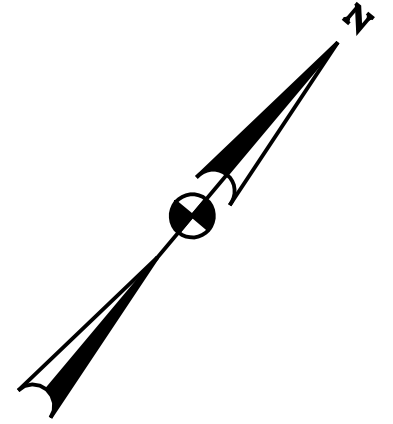
DESIGNED BY _____	DRAWN BY _____	CHECKED BY _____
CONST. REVIEW BY _____	DATE AUGUST, 2006	SCALE 1" = 100'

Q:\SMD\303447\_03\95Sec200ENV\_PL\CADD\section F\JD\_map\_3F.dgn

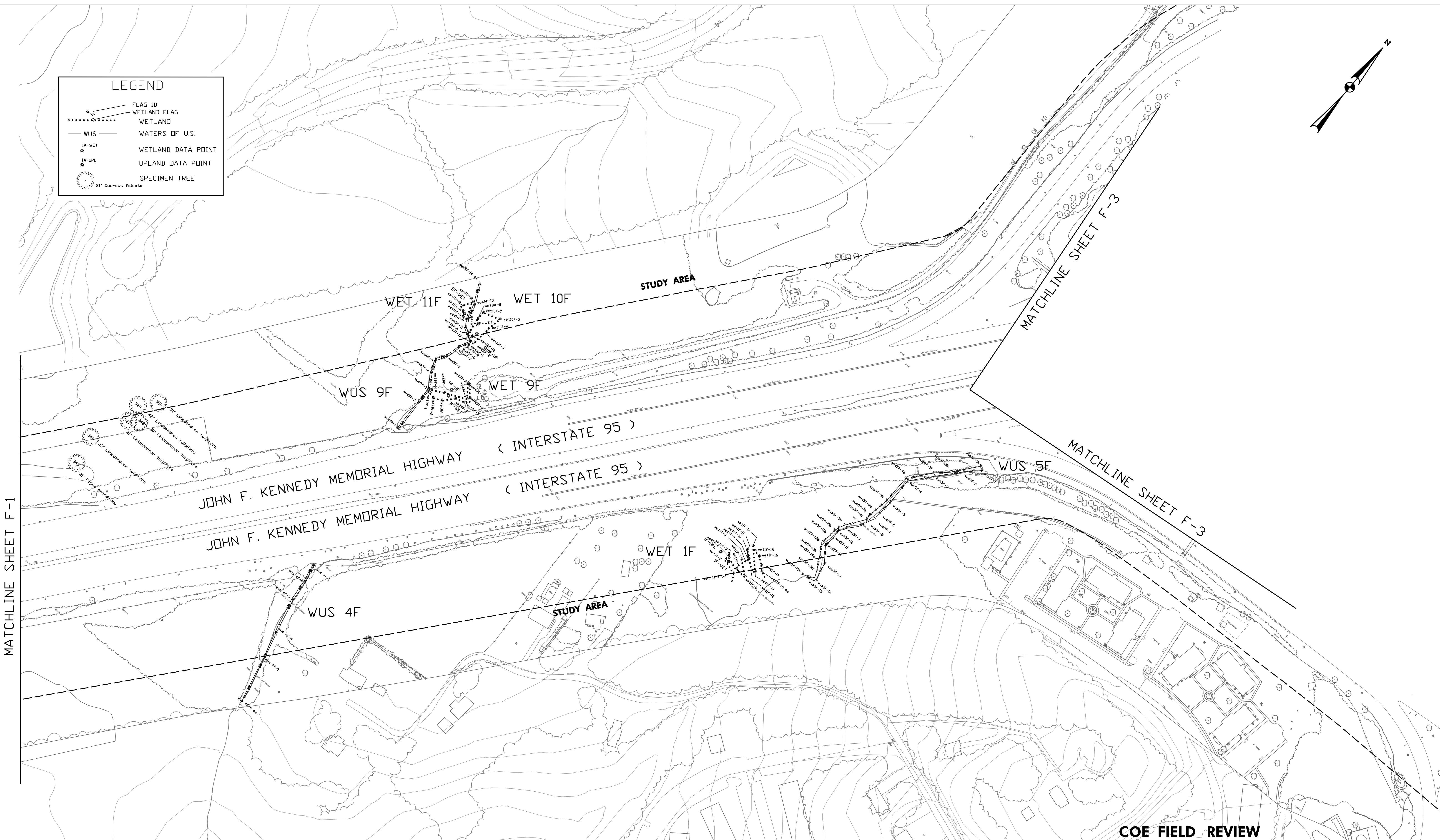
**JOHNSON, MIRMIRAN & THOMPSON**  
Engineering A Brighter Future®  
72 Loveton Circle Baltimore, Maryland 21152-0949

**MARYLAND TRANSPORTATION AUTHORITY**  
Engineering Division





LEGEND	
	FLAG ID
	WETLAND FLAG
	WETLAND
	WATERS OF U.S.
	WETLAND DATA POINT
	UPLAND DATA POINT
	SPECIMEN TREE
	31' Quercus Falcata



MATCHLINE SHEET F-1

MATCHLINE SHEET F-3

MATCHLINE SHEET F-3

**COE FIELD REVIEW**

**SECTION 200:  
I-95, NORTH OF MD 43 TO NORTH OF MD 22**

JOHN F. KENNEDY MEMORIAL HIGHWAY  
BALTIMORE & HARFORD COUNTIES  
**WETLAND DELINEATION MAP**

CONTRACT NO.

DRAWING NO.

**F-2**

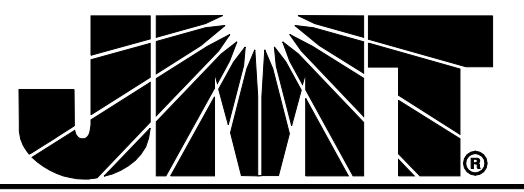
SHEET NO.

OF

ADDENDUMS & REVISIONS			
NO.	DESCRIPTION	BY	DATE

DESIGNED BY _____	DRAWN BY _____	CHECKED BY _____
CONST. REVIEW BY _____	DATE AUGUST, 2006	SCALE 1" = 100'

Q:\SMD\303447\_03\95Sec200ENV\_PL\CADD\section F\JD\_map\_2F.dgn



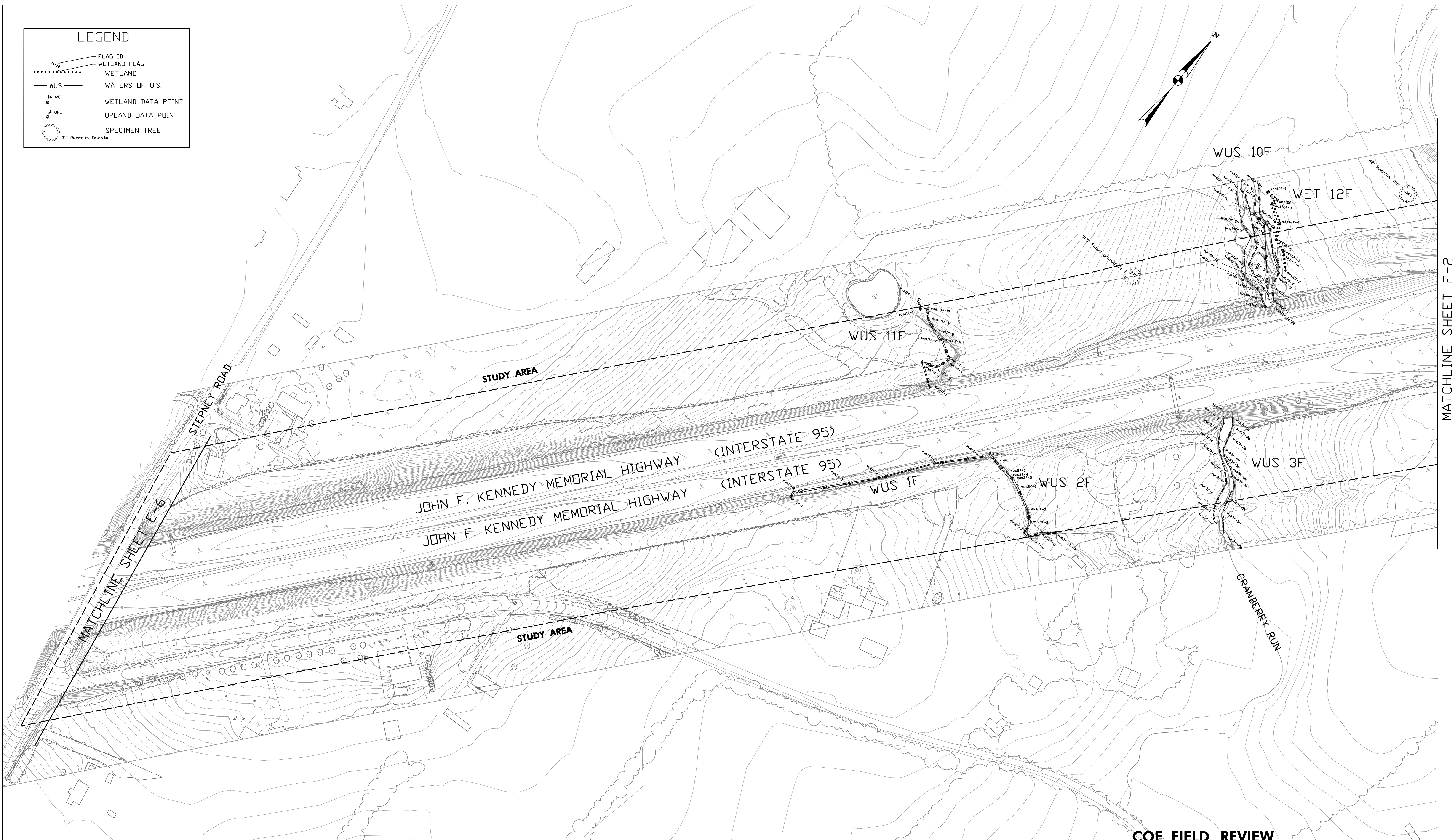
**JOHNSON, MIRMIRAN & THOMPSON**  
Engineering A Brighter Future®  
72 Loveton Circle Baltimore, Maryland 21152-0949



**MARYLAND TRANSPORTATION AUTHORITY**  
Engineering Division



LEGEND	
	FLAG ID
	WETLAND FLAG
	WETLAND
	WATERS OF U.S.
	WETLAND DATA POINT
	UPLAND DATA POINT
	SPECIMEN TREE
	31' Quercus Falcata



**COE FIELD REVIEW**

**SECTION 200:**  
**I-95, NORTH OF MD 43 TO NORTH OF MD 22**

JOHN F. KENNEDY MEMORIAL HIGHWAY  
 BALTIMORE & HARFORD COUNTIES  
**WETLAND DELINEATION MAP**

CONTRACT NO.
DRAWING NO. <b>F-1</b>
SHEET NO. OF

ADDENDUMS & REVISIONS			
NO.	DESCRIPTION	BY	DATE

DESIGNED BY _____	DRAWN BY _____	CHECKED BY _____
CONST. REVIEW BY _____	DATE AUGUST, 2006	SCALE 1" = 100'

Q:\SMD\303447\_03\95Sec200ENV\_PL\CADD\section F\JD\_map.JF.dgn

**JOHNSON, MIRMIRAN & THOMPSON**  
*Engineering A Brighter Future®*  
 72 Loveton Circle Baltimore, Maryland 21152-0949

**MARYLAND TRANSPORTATION AUTHORITY**  
*Engineering Division*





**COE FIELD REVIEW**

**SECTION 200:  
I-95, NORTH OF MD 43 TO NORTH OF MD 22**

JOHN F. KENNEDY MEMORIAL HIGHWAY  
BALTIMORE & HARFORD COUNTIES  
**WETLAND DELINEATION MAP**

CONTRACT NO.  
DRAWING NO.  
**KEY MAP F**  
SHEET NO.  
OF

ADDENDUMS & REVISIONS			
NO.	DESCRIPTION	BY	DATE

DESIGNED BY \_\_\_\_\_ DRAWN BY \_\_\_\_\_ CHECKED BY \_\_\_\_\_  
 CONST. REVIEW BY \_\_\_\_\_ DATE AUGUST, 2006 SCALE 1" = 1000'

Q:\SMD\303447\_03\95Sec200ENV\_PL\CADD\section F\JD.KEYmap.F.dgn

**JOHNSON, MIRMIRAN & THOMPSON**  
Engineering A Brighter Future®  
72 Loveton Circle Baltimore, Maryland 21152-0949

**MARYLAND TRANSPORTATION AUTHORITY**  
Engineering Division