

Forest Conservation Worksheet

Net Tract Area						
A.	Total Tract Area				A = 192.20	
B.	Deductions (Floodplain)*				B = 192.20	
C.	Net Tract Area				C = 0.00	
Land Use Category						
Input the number "1" under the appropriate land use zoning, and limit to only one entry						
	ARA	MDR	IDA	HDR	MPD	CIA
	0	0	0	1	0	0
D.	Afforestation Threshold (Net Tract Area x 15%)					D = 0.00
E.	Conservation Threshold (Net Tract Area x 20%)					E = 0.00
Existing Forest Cover						
F.	Existing Forest Cover within the Net Tract Area					F = 0.00
G.	Area of Forest Above Conservation Threshold					G = 0.00
Break Even Point						
H.	Break Even Point					H = 0.00
I.	Forest Clearing Permitted Without Mitigation					I = 0.00
Proposed Forest Clearing						
J.	Total Area of Forest to be Cleared Within the Net Tract Area					J = 0.00
K.	Total Area of Forest to be Retained Within the Net Tract Area					K = 0.00
Planting Requirements						
L.	Reforestation for Clearing Above the Conservation Threshold					L = 0.00
M.	Reforestation for Clearing Below the Conservation Threshold					M = 0.00
N.	Credit for Retention above the Conservation Threshold					N = 0.00
P.	Total Reforestation Required					P = 0.00
Q.	Total Afforestation Required					Q = 0.00
R.	Total Planting Requirement					R = 0.00
**PIL Calculation						
	Convert Planting Requirement to Sq. Ft.					0.00
	If Project is inside a Priority Funding Area:					0.00
	If Project is outside of a Priority Funding Area:					0.00

*Entire site is within the 100-Year Floodplain. Per Laurel, MD United Land Development Code Sec.20-41.2 Definitions, "Net Tract Area" means:
 a. Except in Agriculture and resource areas, the total area of a site, including both forested and nonforested areas, to the nearest one-tenth (1/10) acre, reduced by the area found to be within the boundaries of the one hundred (100) year floodplain."

FOREST CONSERVATION SUMMARY:

TOTAL REFORESTATION AND AFFORESTATION REQUIRED: 0 ACRES
 TOTAL FOREST CLEARED: 13.15
 NOT PART OF ANY REQUIREMENT
 TOTAL FOREST RETAINED: 55.32
 NOT PART OF ANY REQUIREMENT

GENERAL NOTES:

- For additional property information, see the Natural Resources Inventory, approved September 25, 2017.
- This plan is for Forest Conservation purposes only.
- The subject property is located on Tax Map 6, grid E3, E4, F3, F4, E1, F1
- The existing zoning is PUD-E, Planned Unit Development Existing.
- The proposed use of this property is residential townhouse and single family detached.
- The entire site is located within a 100-Year Floodplain.
- Per the definition of Net Tract Area in Article V, Sec 20-41.2, no reforestation is required.
- Boundary information is from a boundary survey conducted by Rodgers Consulting, Inc in September 2017.
- The topography hereon is from three sources: Aerial/drone survey conducted by Joyce Engineering; field survey by Joyce Engineering, and County GIS data. Rodgers Consulting, Inc verified the topographic survey in September 2017.
- Wetlands as shown were delineated by McCarthy and Associates on May 15, 2017.
- The site is within the Patuxent River watershed, Class 1P.
- For Specimen Tree removal specifics, see Variance Request and Justification Letter.
- Historic Sites on or in the vicinity of the subject property - No.
- Within Chesapeake Bay Critical Area (CBCA) - No.
- Based on a review of available information, this site is not in or adjacent to any easements held by the Maryland Environmental Trust, the Maryland Agricultural Land Preservation Foundation, or any local trust.
- The boundary survey was prepared by Rodgers Consulting, Inc.

NOTE: ARCHITECTURAL FOOTPRINTS ARE SHOWN FOR ILLUSTRATIVE PURPOSES ONLY. FINAL ARCHITECTURE AND BUILDING HEIGHT SHALL BE DETERMINED AT DETAILED SITE PLAN.

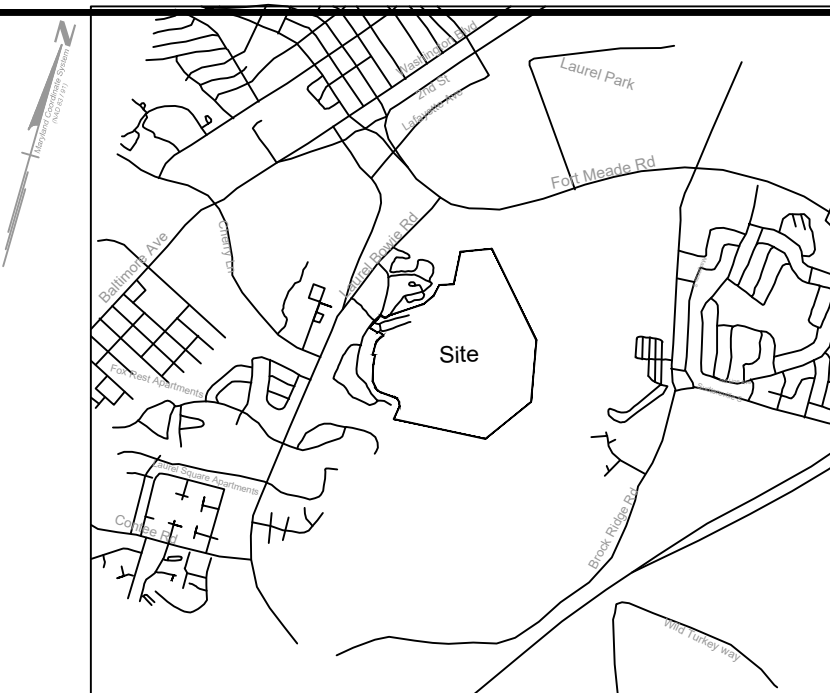
NOTE: PROPOSED UTILITIES SHOWN ARE FOR INFORMATIONAL PURPOSES AND ARE SUBJECT TO CHANGE AT FINAL ENGINEERING.

FINAL FOREST CONSERVATION PLAN

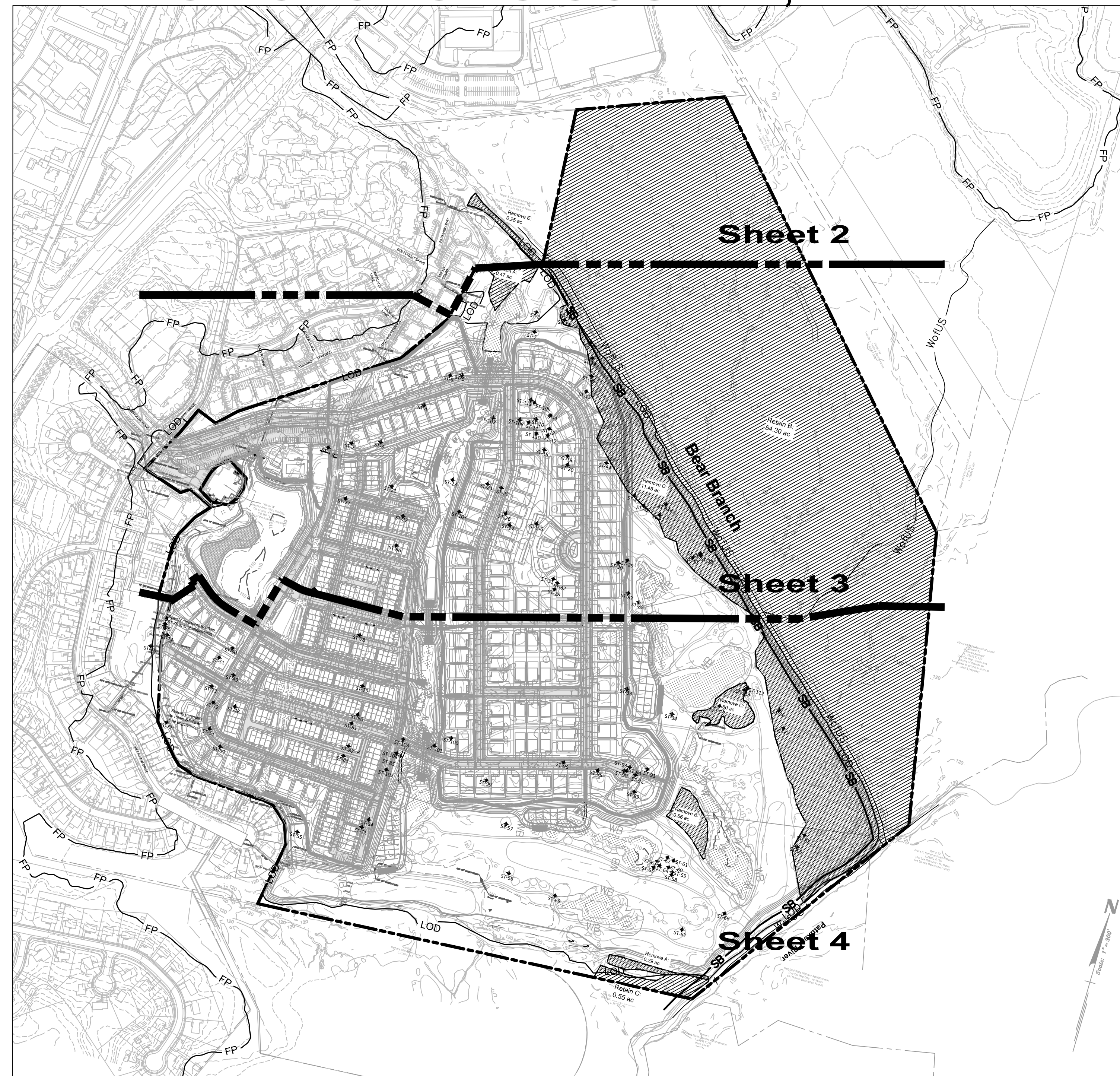
PATUXENT GREENS

10th ELECTION DISTRICT - LAUREL

PRINCE GEORGE'S COUNTY, MARYLAND

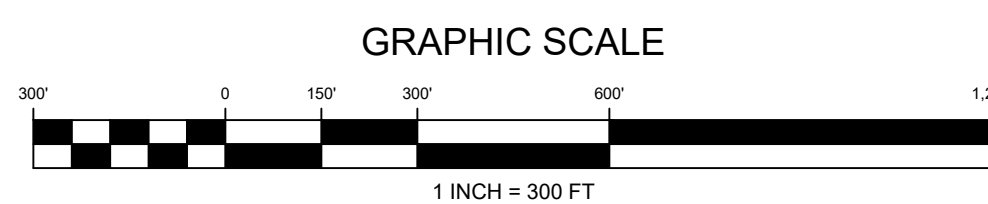


SHEET INDEX	
Sheet Number	Sheet Title
1	Cover Sheet
2	Preliminary & Final Forest Conservation Plan
3	Preliminary & Final Forest Conservation Plan
4	Preliminary & Final Forest Conservation Plan
5	Notes and Details



LEGEND:

W	EX. WETLAND
WB	EX. WETLAND BUFFER
WofUS	EX. WATERS OF THE US
FP	EX. FLOODPLAIN
ES	EX. EPHEMERAL STREAM
SB	EX. STREAM BUFFER
LOD	LIMIT OF DISTURBANCE
[Hatched Box]	FOREST REMOVED (NOT PART OF ANY REQUIREMENT)
[Dotted Box]	FOREST RETAINED (NOT PART OF ANY REQUIREMENT)
ST-1	SPECIMEN TREE TO BE RETAINED
ST-1	SPECIMEN TREE TO BE REMOVED



City of Laurel Planning Commission
 Approved: _____ Date: _____
 Chairman _____ Secretary _____

City of Laurel DPW

DATE RECEIVED BY DPW: _____ DATE RETURNED TO ECD: _____
 DPW REVIEWER: _____ DATE: _____
 DPW DIRECTOR (OR DESIGNEE): _____ DATE: _____
 APPROVED: _____ APPROVED W/COMMENTS: _____ REVIEWED: _____ REJECTED _____



REVISION	DATE	REVISION	DATE

Applicant:
CS PATUXENT GREENS, LLC.
 6290 MONTROSE ROAD
 ROCKVILLE, MD 20852
 PHONE: 301-758-0333
 CONTACT: ALAN COHEN

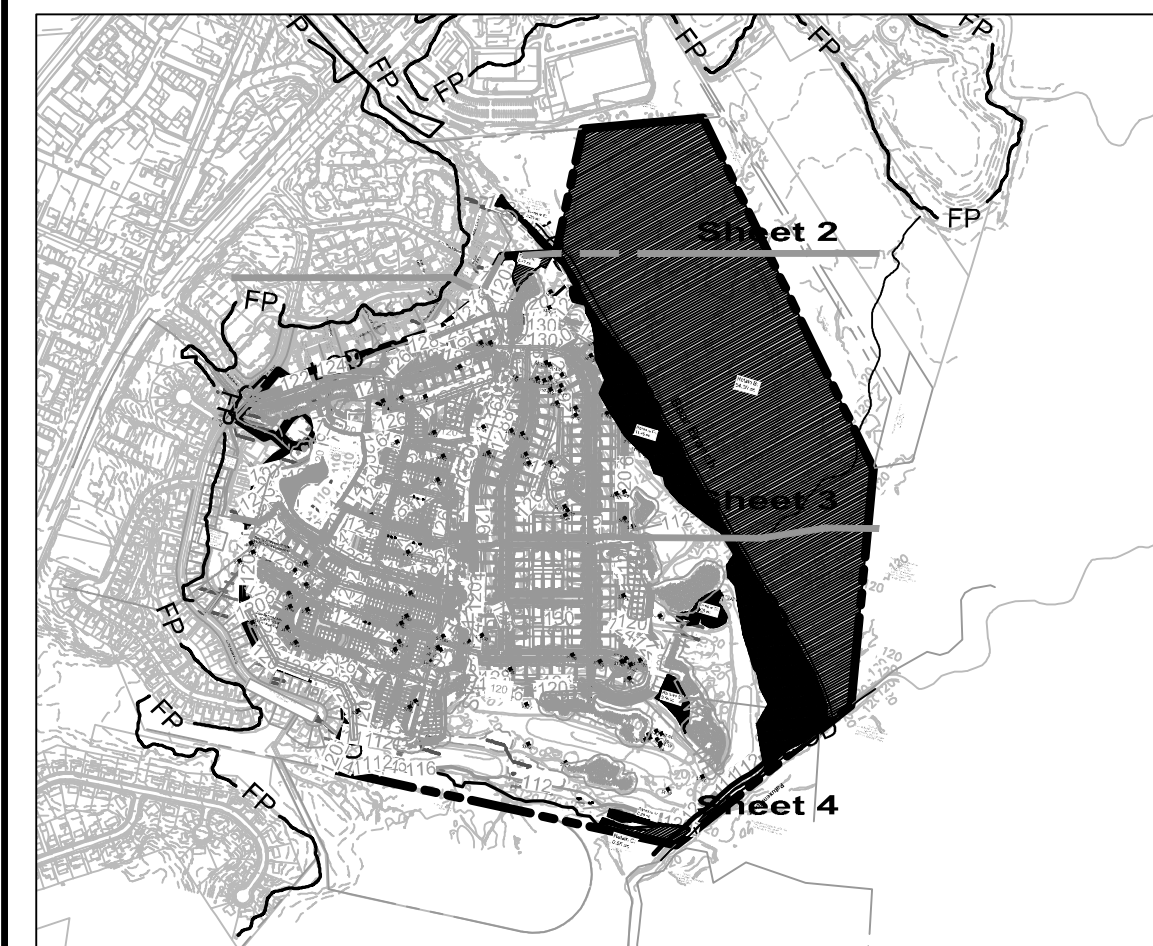
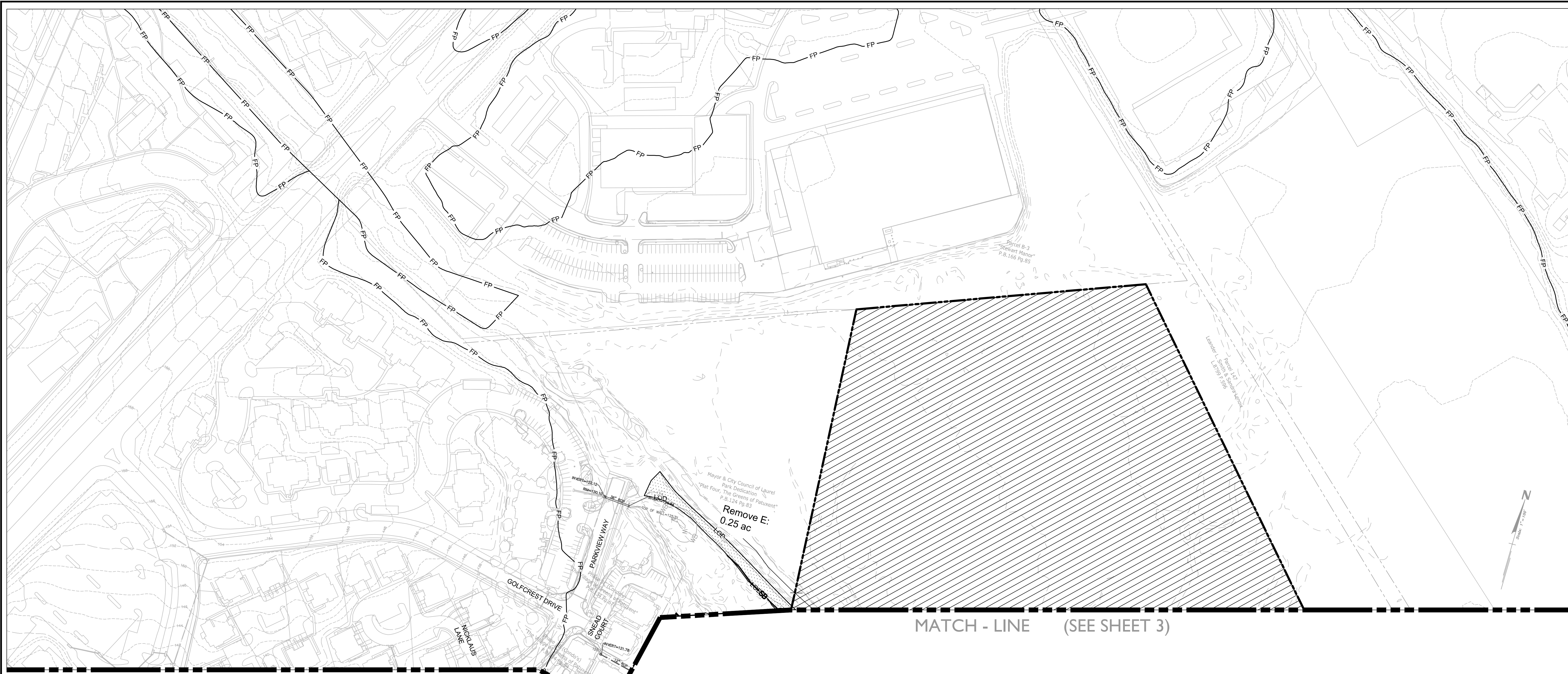
PATUXENT GREENS
 PARCEL A, NLP 126 P.59
 L. 6008 F.266
 ELECTION DISTRICT No. 10
 LAUREL, PRINCE GEORGE'S COUNTY, MARYLAND

RODGERS CONSULTING
 19847 Century Boulevard, Suite 200, Germantown, Maryland 20874
 Ph: 301.948.4700 Fx: 301.948.6256 www.roddgers.com

BY	DATE
BASE DATA	CADD
DESIGNED	PH
DRAWN	CT
REVIEWED	
RODGERS CONTACT:	
RELEASE FOR _____	
BY: _____	DATE: _____

PRELIMINARY & FINAL FOREST CONSERVATION PLAN

SCALE: 1" = 300'
 JOB No. 1262A
 DATE: May, 2018
 SHEET No. 1 of 5

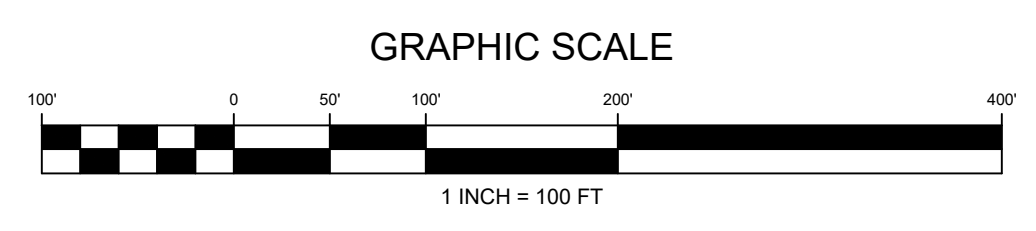


LEGEND:

— W —	EX. WETLAND
— WB —	EX. WETLAND BUFFER
— WofUS —	EX. WATERS OF THE US
— —	EX. FLOODPLAIN BRL
— —	EX. EPHEMERAL STREAM
— SB —	EX. STREAM BUFFER
— LOD —	LIMIT OF DISTURBANCE
	FOREST REMOVED (NOT PART OF ANY REQUIREMENT)
	FOREST RETAINED (NOT PART OF ANY REQUIREMENT)
	SPECIMEN TREE TO BE RETAINED
	SPECIMEN TREE TO BE REMOVED

NOTE: ARCHITECTURAL FOOTPRINTS ARE SHOWN FOR ILLUSTRATIVE PURPOSES ONLY. FINAL ARCHITECTURE AND BUILDING HEIGHT SHALL BE DETERMINED AT DETAILED SITE PLAN.

NOTE: PROPOSED UTILITIES SHOWN ARE FOR INFORMATIONAL PURPOSES AND ARE SUBJECT TO CHANGE AT FINAL ENGINEERING.



REVISION	DATE	REVISION	DATE

Applicant:
CS PATUXENT GREENS, LLC.
 6290 MONTROSE ROAD
 ROCKVILLE, MD 20852
 PHONE: 301-758-0333
 CONTACT: ALAN COHEN

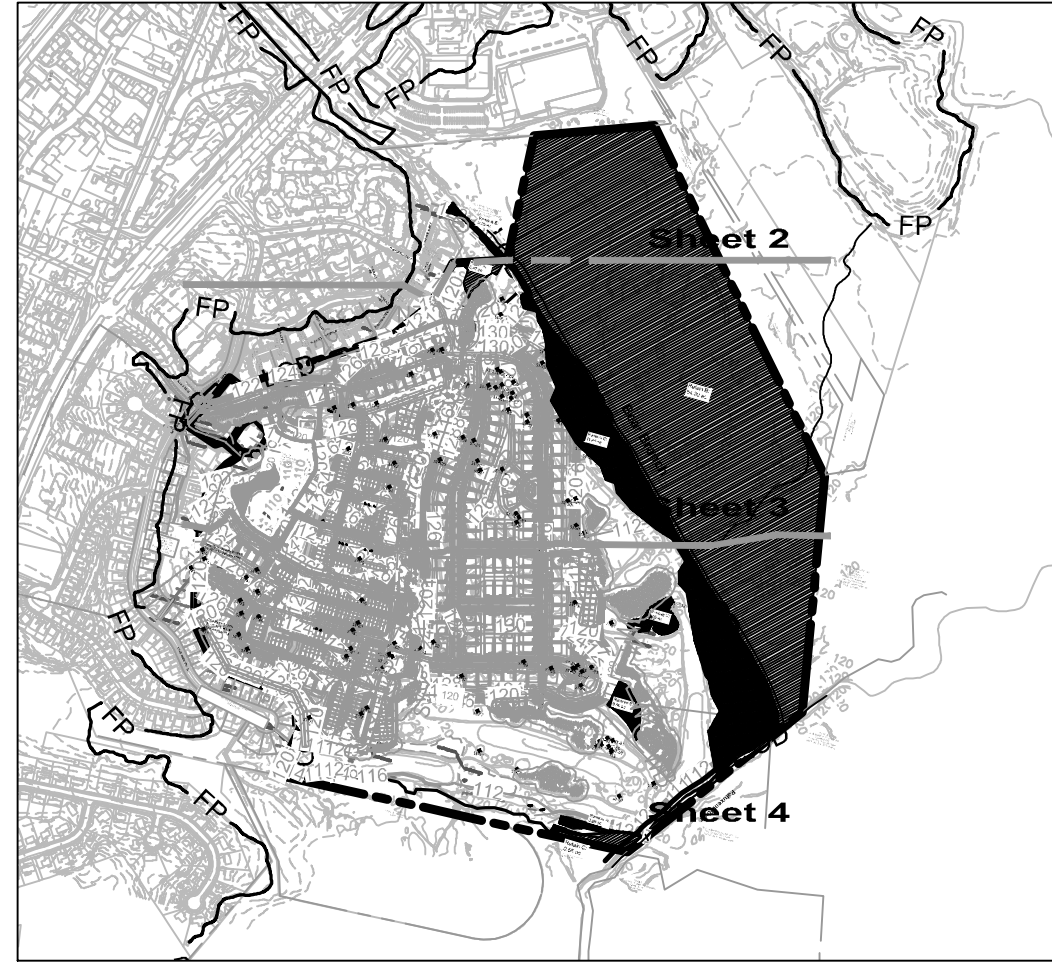
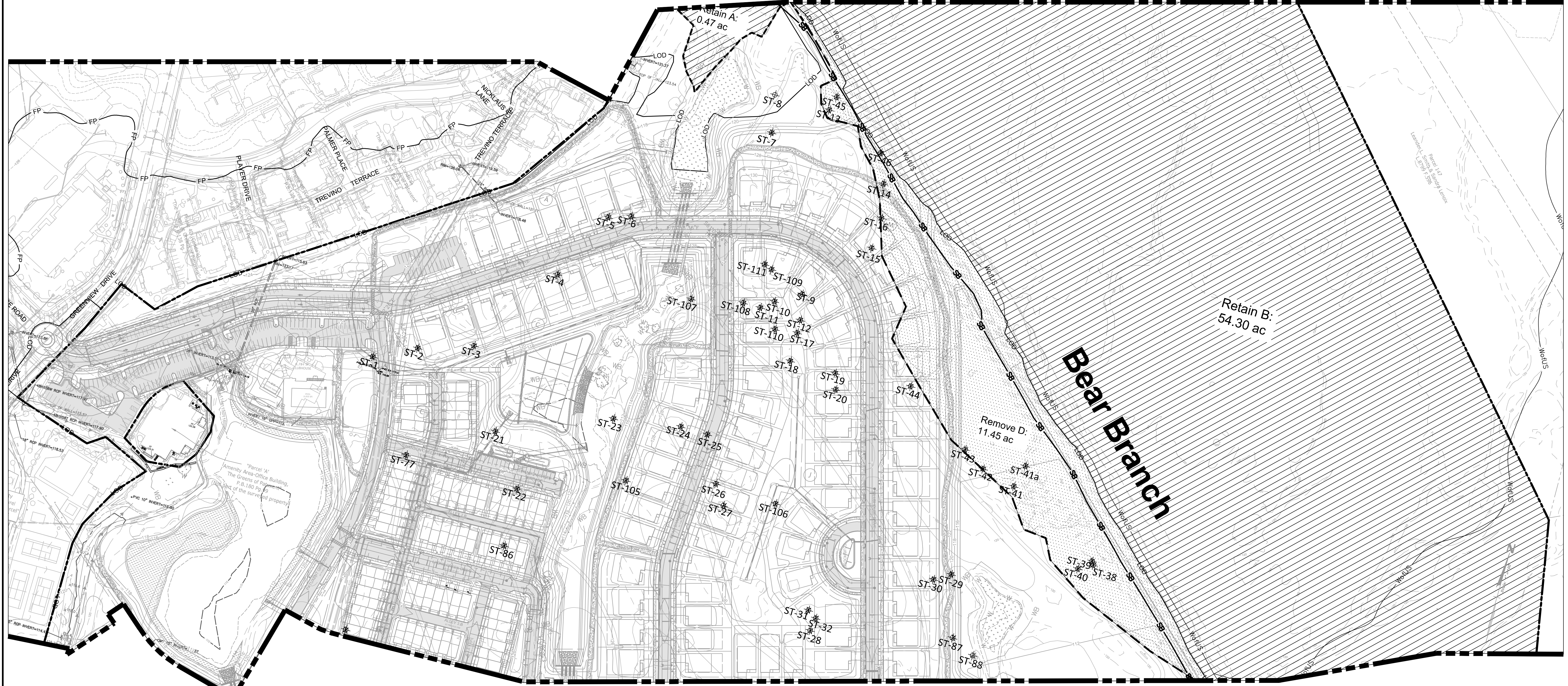
PATUXENT GREENS
 PARCEL A, NLP 126 P.59
 L. 6008 F.266
 ELECTION DISTRICT No. 10
 LAUREL, PRINCE GEORGE'S COUNTY, MARYLAND

RODGERS CONSULTING
 19847 Century Boulevard, Suite 200, Greenbelt, MD 21740
 Ph: 301.948.4700 Fax: 301.948.6256 www.rodgers.com

BY	DATE
BASE DATA	CADD
DESIGNED	PH
DRAWN	CT
REVIEWED	
RODGERS CONTACT: _____	
TERMINAL RELEASE FOR _____	
BY: _____	DATE: _____

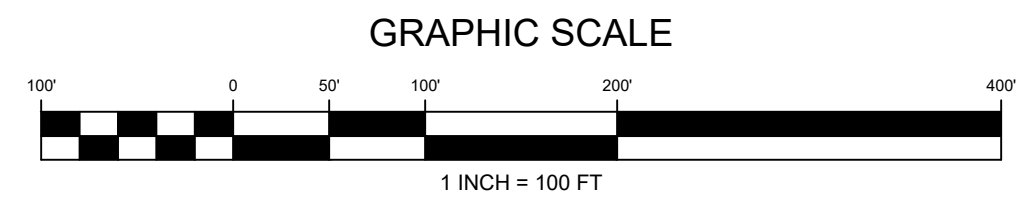
**PRELIMINARY & FINAL
 FOREST CONSERVATION PLAN**

SCALE: 1" = 100'
 JOB No. 1262A
 DATE: May, 2018
 SHEET No. 2 of 5



LEGEND:

- W — W — EX. WETLAND
- WB — EX. WETLAND BUFFER
- Wo/US — EX. WATERS OF THE US
- — — EX. FLOODPLAIN BRL
- — — EX. EPHEMERAL STREAM
- SB — EX. STREAM BUFFER
- LOD — LIMIT OF DISTURBANCE
- ▨ FOREST REMOVED (NOT PART OF ANY REQUIREMENT)
- ▩ FOREST RETAINED (NOT PART OF ANY REQUIREMENT)
- ⊕ ST-1 SPECIMEN TREE TO BE RETAINED
- ✱ ST-1 SPECIMEN TREE TO BE REMOVED



NOTE: ARCHITECTURAL FOOTPRINTS ARE SHOWN FOR ILLUSTRATIVE PURPOSES ONLY. FINAL ARCHITECTURE AND BUILDING HEIGHT SHALL BE DETERMINED AT DETAILED SITE PLAN.

NOTE: PROPOSED UTILITIES SHOWN ARE FOR INFORMATIONAL PURPOSES AND ARE SUBJECT TO CHANGE AT FINAL ENGINEERING.

REVISION	DATE	REVISION	DATE

Applicant:
CS PATUXENT GREENS, LLC.
 6290 MONTROSE ROAD
 ROCKVILLE, MD 20852
 PHONE: 301-758-0333
 CONTACT: ALAN COHEN

PATUXENT GREENS
 PARCEL A, NLP 126 P.59
 L. 6008 F.266
 ELECTION DISTRICT No. 10
 LAUREL, PRINCE GEORGE'S COUNTY, MARYLAND

RODGERS CONSULTING
 19847 Century Boulevard, Suite 200, Germantown, Maryland 20874
 Ph: 301.948.4700 Fax: 301.948.6256 www.rodgers.com

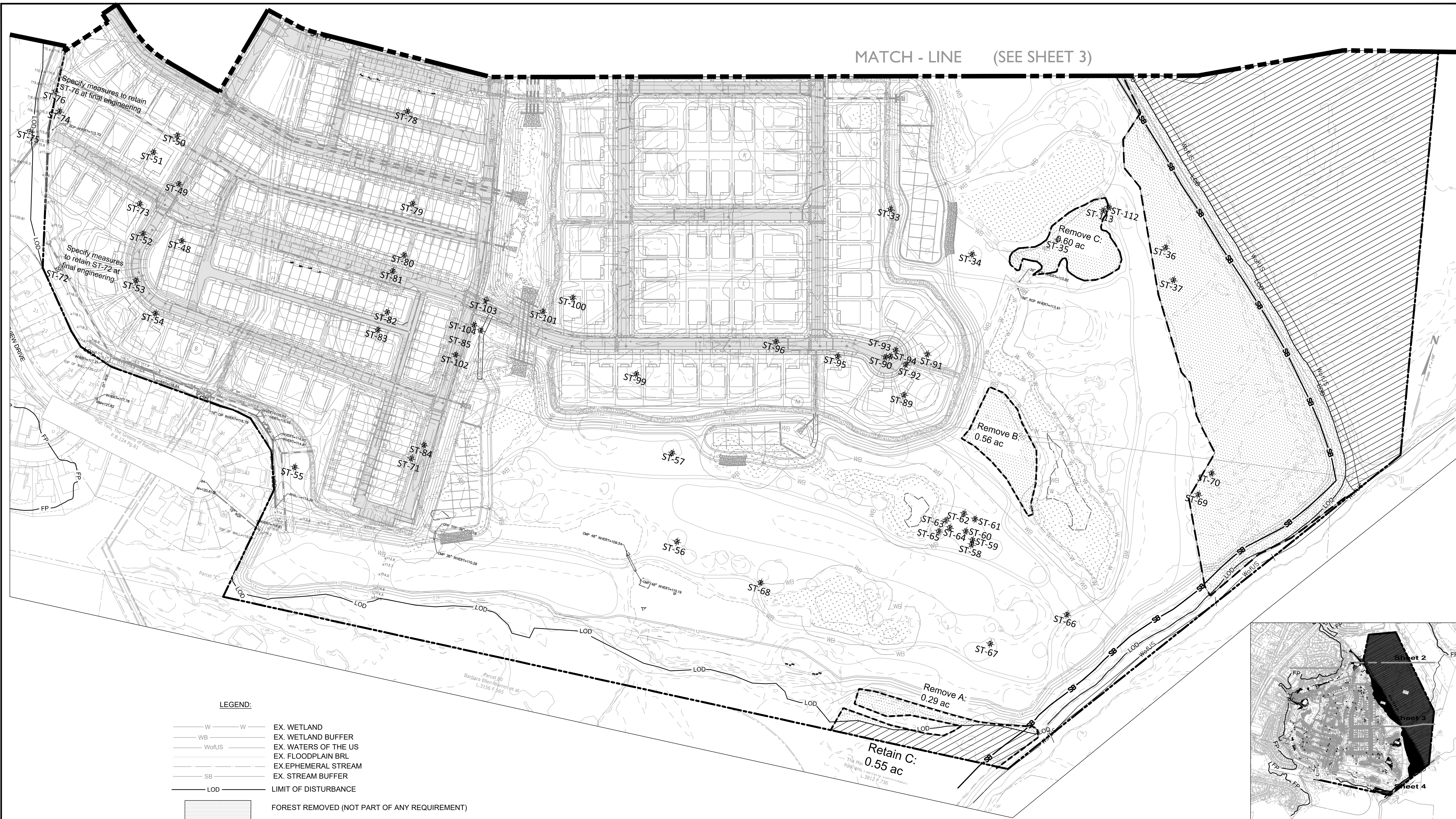
BY	DATE
BASE DATA	CADD
DESIGNED	PH
DRAWN	CT
REVIEWED	
RODGERS CONTACT:	
RELEASE FOR	
BY	DATE

**PRELIMINARY & FINAL
 FOREST CONSERVATION PLAN**

SCALE: 1" = 100'
 JOB No. 1262A
 DATE: May, 2018
 SHEET No. 3 of 5



MATCH - LINE (SEE SHEET 3)

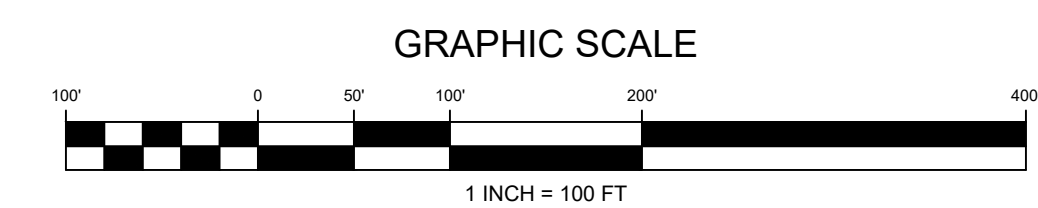
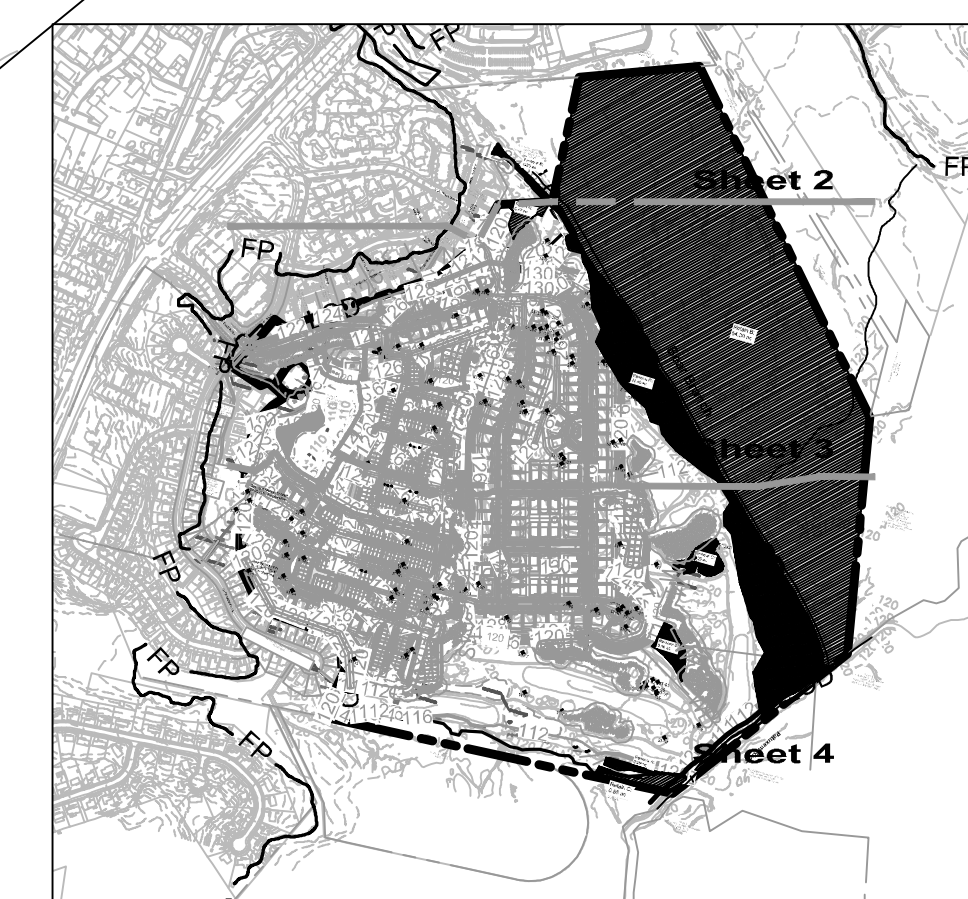


LEGEND:

- W — W — EX. WETLAND
- WB — EX. WETLAND BUFFER
- WofUS — EX. WATERS OF THE US
- — EX. FLOODPLAIN BRL
- — EX. EPHEMERAL STREAM
- SB — EX. STREAM BUFFER
- LOD — LIMIT OF DISTURBANCE
- FOREST REMOVED (NOT PART OF ANY REQUIREMENT)
- FOREST RETAINED (NOT PART OF ANY REQUIREMENT)
- ST-1 — SPECIMEN TREE TO BE RETAINED
- ST-1 — SPECIMEN TREE TO BE REMOVED

NOTE: ARCHITECTURAL FOOTPRINTS ARE SHOWN FOR ILLUSTRATIVE PURPOSES ONLY. FINAL ARCHITECTURE AND BUILDING HEIGHT SHALL BE DETERMINED AT DETAILED SITE PLAN.

NOTE: PROPOSED UTILITIES SHOWN ARE FOR INFORMATIONAL PURPOSES AND ARE SUBJECT TO CHANGE AT FINAL ENGINEERING.



REVISION	DATE	REVISION	DATE

Applicant:
CS PATUXENT GREENS, LLC.
 6290 MONTROSE ROAD
 ROCKVILLE, MD 20852
 PHONE: 301-758-0333
 CONTACT: ALAN COHEN

PATUXENT GREENS
 PARCEL A, NLP 126 P.59
 L.6008 F.266
 ELECTION DISTRICT No. 10
 LAUREL, PRINCE GEORGE'S COUNTY, MARYLAND

RODGERS CONSULTING
 19847 Century Boulevard, Suite 200, Germantown, Maryland 20874
 Ph: 301.948.4700 Fx: 301.948.6256 www.rodgers.com

BY	DATE
BASE DATA	CADD
DESIGNED	PH
DRAWN	CT
REVIEWED	
RODGERS CONTACT:	
RELEASE FOR	<input type="checkbox"/>
BY	DATE

**PRELIMINARY & FINAL
 FOREST CONSERVATION PLAN**

SCALE: 1" = 100'
 JOB No. 1262A
 DATE: May, 2018
 SHEET No. 4 of 5

Specimen Tree Table					
No.	Common Name	Botanical Name	Dbh (Inches)	Condition Rating	Disposition
ST-1	Pin Oak	Quercus palustris	35	Good	Remove
ST-2	Pin Oak	Quercus palustris	40	Good	Remove
ST-3	Pin Oak	Quercus palustris	36	Fair	Remove
ST-4	Pin Oak	Quercus palustris	36	Fair	Remove
ST-5	Red Maple	Acer rubrum	33	Poor	Remove
ST-6	Red Maple	Acer rubrum	36	Fair	Remove
ST-7	Silver Maple	Acer saccharinum	30	Poor	Remove
ST-8	Pin Oak	Quercus palustris	32	Fair	Retain
ST-9	Red Maple	Acer rubrum	30	Poor	Remove
ST-10	Willow oak	Quercus phellos	40	Fair	Remove
ST-11	Red Maple	Acer rubrum	40	Fair	Remove
ST-12	Red Maple	Acer rubrum	30	Poor	Remove
ST-13	Silver Maple	Acer saccharinum	30	Poor	Remove
ST-14	Silver Maple	Acer saccharinum	30	Poor	Remove
ST-15	Red Maple	Acer rubrum	36	Fair	Remove
ST-16	Red Maple	Acer rubrum	46	Poor	Remove
ST-17	Red Maple	Acer rubrum	34	Poor	Remove
ST-18	Red Maple	Acer rubrum	38	Fair	Remove
ST-19	Red Maple	Acer rubrum	38	Fair	Remove
ST-20	Red Maple	Acer rubrum	35	Good	Remove
ST-21	Pin Oak	Quercus palustris	65	Poor	Remove
ST-22	Pin Oak	Quercus palustris	38	Fair	Remove
ST-23	Willow Oak	Quercus phellos	42	Poor	Remove
ST-24	Willow Oak	Quercus phellos	42	Poor	Remove
ST-25	Willow Oak	Quercus phellos	37	Good	Remove
ST-26	Red Maple	Acer rubrum	38	Poor	Remove
ST-27	Red Maple	Acer rubrum	27	Poor	Remove
ST-28	Red Maple	Acer rubrum	30	Fair	Remove
ST-29	Silver Maple	Acer saccharinum	47	Poor	Remove
ST-30	Red maple	Acer rubrum	31	Poor	Remove
ST-31	Swamp White Oak	Quercus bicolor	32	Good	Remove
ST-32	Red Maple	Acer rubrum	43	Fair	Remove
ST-33	Pin Oak	Quercus palustris	40	Good	Remove
ST-34	Silver Maple	Acer saccharinum	44	Poor	Remove
ST-35	Pin Oak	Quercus palustris	44	Poor	Remove
ST-36	American Sycamore	Platanus occidentalis	35	Good	Remove
ST-37	American Sycamore	Platanus occidentalis	42	Fair	Remove
ST-38	American Sycamore	Platanus occidentalis	38	Good	Remove
ST-39	American Sycamore	Platanus occidentalis	42	Fair	Remove
ST-40	American Sycamore	Platanus occidentalis	41	Good	Remove
ST-41	American Sycamore	Platanus occidentalis	56	Good	Remove
ST-41a	Red Maple	Acer rubrum	41	Good	Remove
ST-42	Silver Maple	Acer saccharinum	34	Good	Remove
ST-43	Silver Maple	Acer saccharinum	32	Fair	Remove
ST-44	Silver Maple	Acer saccharinum	41	Poor	Remove
ST-45	Silver Maple	Acer saccharinum	38	Poor	Remove
ST-46	Silver Maple	Acer saccharinum	41	Poor	Remove
ST-47	Pin Oak	Quercus palustris	51	Poor	Remove
ST-48	Pin Oak	Quercus palustris	38	Poor	Remove
ST-49	Pin Oak	Quercus palustris	31	Fair	Remove
ST-50	Pin Oak	Quercus palustris	31	Fair	Remove
ST-51	Pin Oak	Quercus palustris	35	Fair	Remove
ST-52	Pin Oak	Quercus palustris	33	Fair	Remove
ST-53	Pin Oak	Quercus palustris	30	Good	Remove
ST-54	Willow Oak	Quercus phellos	32	Good	Remove
ST-55	Silver Maple	Acer saccharinum	30	Good	Remove
ST-56	Silver Maple	Acer saccharinum	53	Fair	Remove
ST-57	American Sycamore	Platanus occidentalis	36	Fair	Remove
ST-58	American Sycamore	Platanus occidentalis	34	Fair	Remove
ST-59	American Sycamore	Platanus occidentalis	30	Fair	Remove
ST-60	American Sycamore	Platanus occidentalis	37	Fair	Remove

Specimen Tree Table					
No.	Common Name	Botanical Name	Dbh (Inches)	Condition Rating	Disposition
ST-61	American Sycamore	Platanus occidentalis	36	Fair	Remove
ST-62	American Sycamore	Platanus occidentalis	36	Fair	Remove
ST-63	American Sycamore	Platanus occidentalis	36	Fair	Remove
ST-64	American Sycamore	Platanus occidentalis	33	Fair	Remove
ST-65	American Sycamore	Platanus occidentalis	34	Poor	Remove
ST-66	Silver Maple	Acer saccharinum	37	Fair	Remove
ST-67	Silver Maple	Acer saccharinum	30	Fair	Remove
ST-68	Red Maple	Acer rubrum	33	Fair	Remove
ST-69	Silver Maple	Acer saccharinum	44	Poor	Remove
ST-70	Silver Maple	Acer saccharinum	44	Poor	Remove
ST-71	Willow Oak	Quercus phellos	30	Fair	Remove
ST-72	Red Maple	Acer rubrum	35	Good	Retain
ST-73	Pin Oak	Quercus palustris	38	Poor	Remove
ST-74	Pin Oak	Quercus palustris	32	Good	Remove
ST-75	Willow Oak	Quercus phellos	31	Good	Retain
ST-76	Pin Oak	Quercus palustris	39	Good	Retain
ST-77	Pin Oak	Quercus palustris	41	Good	Remove
ST-78	Pin Oak	Quercus palustris	30	Good	Remove
ST-79	Pin Oak	Quercus palustris	47	Fair	Remove
ST-80	Pin Oak	Quercus palustris	37	Poor	Remove
ST-81	Pin Oak	Quercus palustris	38	Poor	Remove
ST-82	Pin Oak	Quercus palustris	33	Fair	Remove
ST-83	Pin Oak	Quercus palustris	34	Poor	Remove
ST-84	Pin Oak	Quercus palustris	30	Poor	Remove
ST-85	Red Maple	Acer rubrum	31	Fair	Remove
ST-86	Red Maple	Acer rubrum	38	Poor	Remove
ST-87	Silver Maple	Acer saccharinum	36	Good	Remove
ST-88	Sweetgum	Liquidambar styracifua	65	Good	Remove
ST-89	Pin Oak	Quercus palustris	38	Fair	Remove
ST-90	Red Maple	Acer rubrum	43	Poor	Remove
ST-91	Red Maple	Acer rubrum	36	Fair	Remove
ST-92	Pin Oak	Quercus palustris	33	Good	Remove
ST-93	Box Elder	Acer negundo	47	Poor	Remove
ST-94	Red Maple	Acer rubrum	34	Poor	Remove
ST-95	Swamp White Oak	Quercus bicolor	30	Good	Remove
ST-96	Pin Oak	Quercus palustris	30	Good	Remove
ST-97	Silver Maple	Acer saccharinum	31	Good	Remove
ST-98	Silver Maple	Acer saccharinum	48	Fair	remove
ST-99	Pin Oak	Quercus palustris	35	Good	Remove
ST-100	Red maple	Acer rubrum	40	Poor	Remove
ST-101	Red Maple	Acer rubrum	42	Poor	Remove
ST-102	Sweetgum	Liquidambar styracifua	46	Good	Remove
ST-103	Red Maple	Acer rubrum	36	Good	Remove
ST-104	Pin Oak	Quercus palustris	46	Good	Remove
ST-105	Pin Oak	Quercus palustris	35	Fair	Remove
ST-106	Red Maple	Acer rubrum	34	Fair	Remove
ST-107	Red Maple	Acer rubrum	31	Fair	Remove
ST-108	Red Maple	Acer rubrum	31	Fair	Remove
ST-109	Red maple	Acer rubrum	35	Poor	Remove
ST-110	Red Maple	Acer rubrum	31	Fair	Remove
ST-111	Red Maple	Acer rubrum	31	Good	Remove
ST-112	Pin Oak	Quercus palustris	30	Good	Remove
ST-113	Silver Maple	Acer saccharinum	35	Good	Remove

NOTE: ARCHITECTURAL FOOTPRINTS ARE SHOWN FOR ILLUSTRATIVE PURPOSES ONLY. FINAL ARCHITECTURE AND BUILDING HEIGHT SHALL BE DETERMINED AT DETAILED SITE PLAN.

NOTE: PROPOSED UTILITIES SHOWN ARE FOR INFORMATIONAL PURPOSES AND ARE SUBJECT TO CHANGE AT FINAL ENGINEERING.

REVISION	DATE	REVISION	DATE

Applicant:

CS PATUXENT GREENS, LLC.
6290 MONTROSE ROAD
ROCKVILLE, MD 20852
PHONE: 301-758-0333
CONTACT: ALAN COHEN

PATUXENT GREENS

PARCEL A, NLP 126 P.59
L 6008 F.266
ELECTION DISTRICT No. 10
LAUREL, PRINCE GEORGE'S COUNTY, MARYLAND

RODGERS CONSULTING

19847 Century Boulevard, Suite 200, Germantown, Maryland 20874
Ph: 301.948.4700 Fax: 301.948.6256 www.rodgers.com

BY	DATE
BASE DATA	CADD
DESIGNED	PH
DRAWN	CT
REVIEWED	

RODGERS CONTACT:

RELEASE FOR

BY: _____ DATE: _____

PRELIMINARY & FINAL FOREST CONSERVATION PLAN



SCALE: 1" = 100'

JOB No. 1262A

DATE: May, 2018

SHEET No. 5 of 5