



**Maryland Department of the Environment**

---

# WIP Local Technical Series #2

**April 8, 2013**



# Overview

- Welcome & Announcements
- CBP Watershed Model Scales
- Allocation Methodology for Phase II
- BMP Verification





# Announcements

---

- February Webinar Information (<http://tinyurl.com/WIP-Imp>)
- 2012-2013 Milestone Reporting Guidance
- Local Data Solicitation Request
- [Reclaim the Bay](#)
- 2015 Milestones
  - BMP Milestones: July 1, 2013 – June 30, 2015
  - Programmatic Milestones: Jan 1, 2014 – Dec. 31, 2015



# Announcements

---

- Regional Meetings
  - Schedule
    - Western Maryland, Monday, April 22  
Williamsport Fire Hall, Williamsport
    - Central Maryland, Thursday, April 25  
Overhills Mansion, Catonsville
    - Upper Eastern Shore, Monday, April 29  
Talbot Community Center, Easton
    - Southern Maryland, Tuesday, May 7  
College of Southern Maryland, LaPlata
    - Lower Eastern Shore, Wed, May 15  
Salisbury, Maryland



# Overview

- Welcome & Announcements
- **CBP Watershed Model Scales**
- Allocation Methodology for Phase II
- BMP Verification

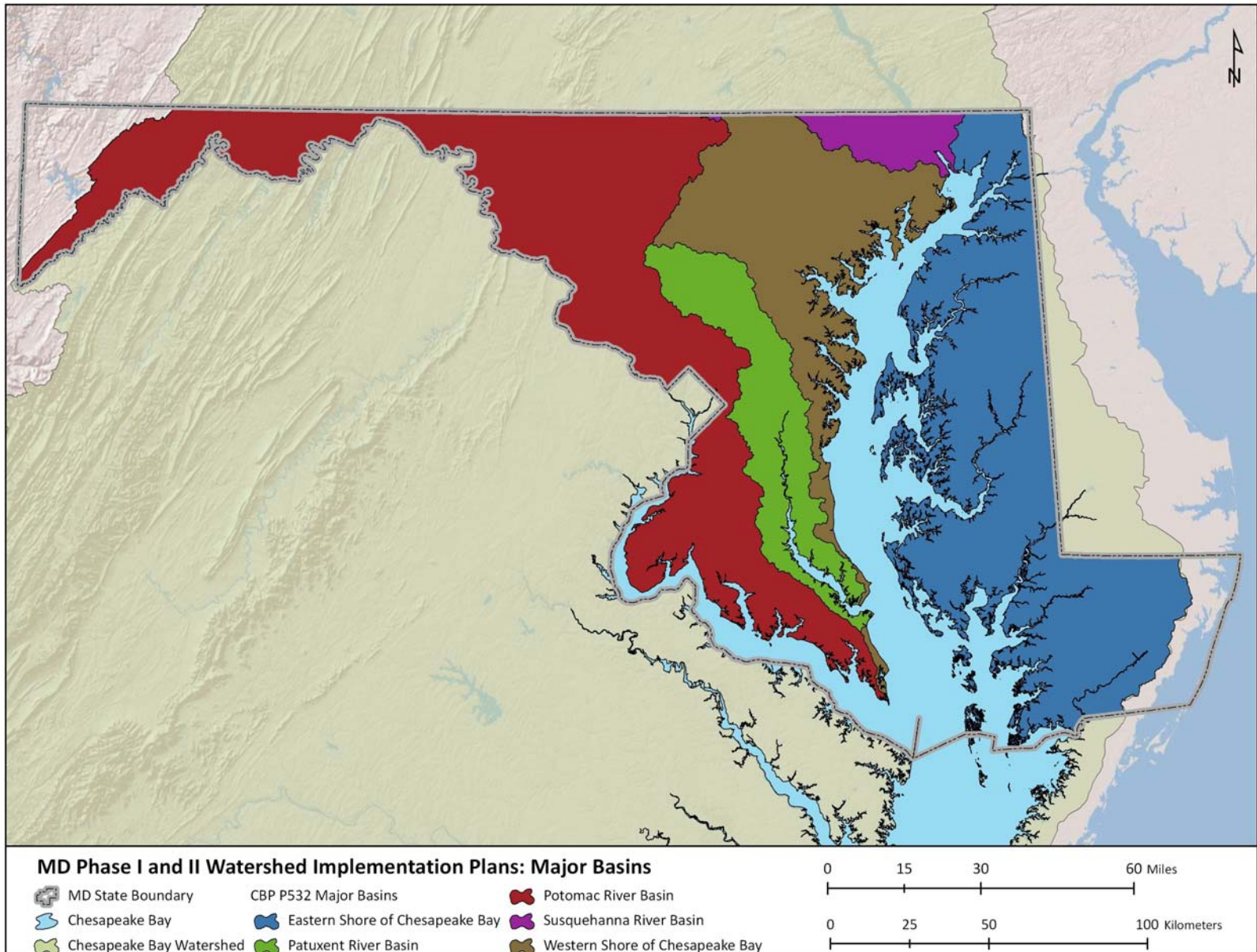




# CBP Watershed Model Scales

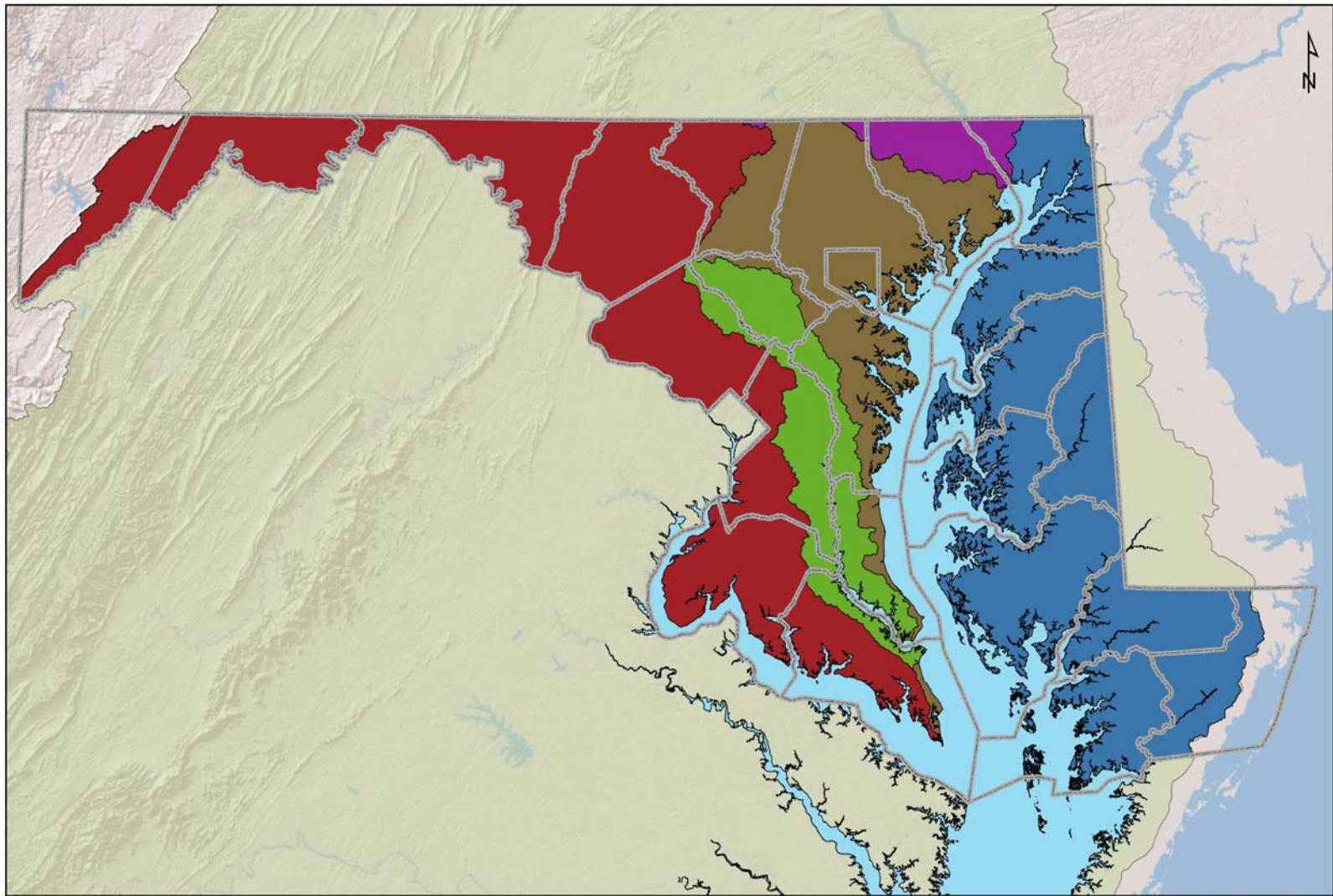
- Three Watershed Scales
  - Major-Basin
  - Bay TMDL Segment-Sheds
  - Land-River Segments
- Scale usage
  - Major-Basin – EPA Allocations
  - Bay TMDL Segment-Sheds – Bay TMDLs
  - Land-River Segments – Model Scale
    - Can be aggregated to County level for Management Purposes

# Major-Basin





# Major-Basin



**MD Phase I and II Watershed Implementation Plans: Major Basins**

- |                          |                                 |                                 |
|--------------------------|---------------------------------|---------------------------------|
| Chesapeake Bay           | CBP P532 Major Basins           | Potomac River Basin             |
| MD County Boundaries     | Eastern Shore of Chesapeake Bay | Susquehanna River Basin         |
| Chesapeake Bay Watershed | Patuxent River Basin            | Western Shore of Chesapeake Bay |

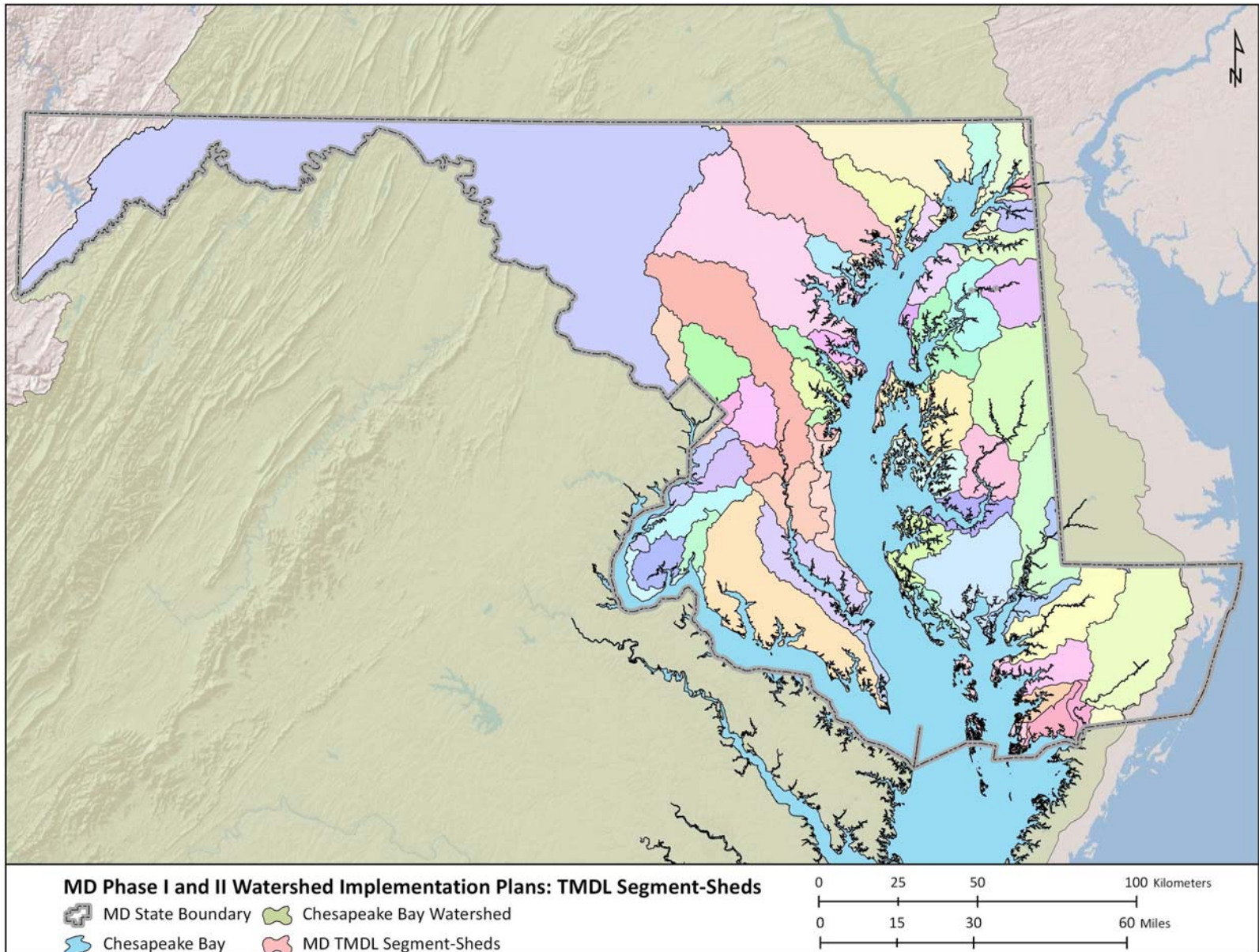
0 15 30 60 Miles

0 25 50 100 Kilometers



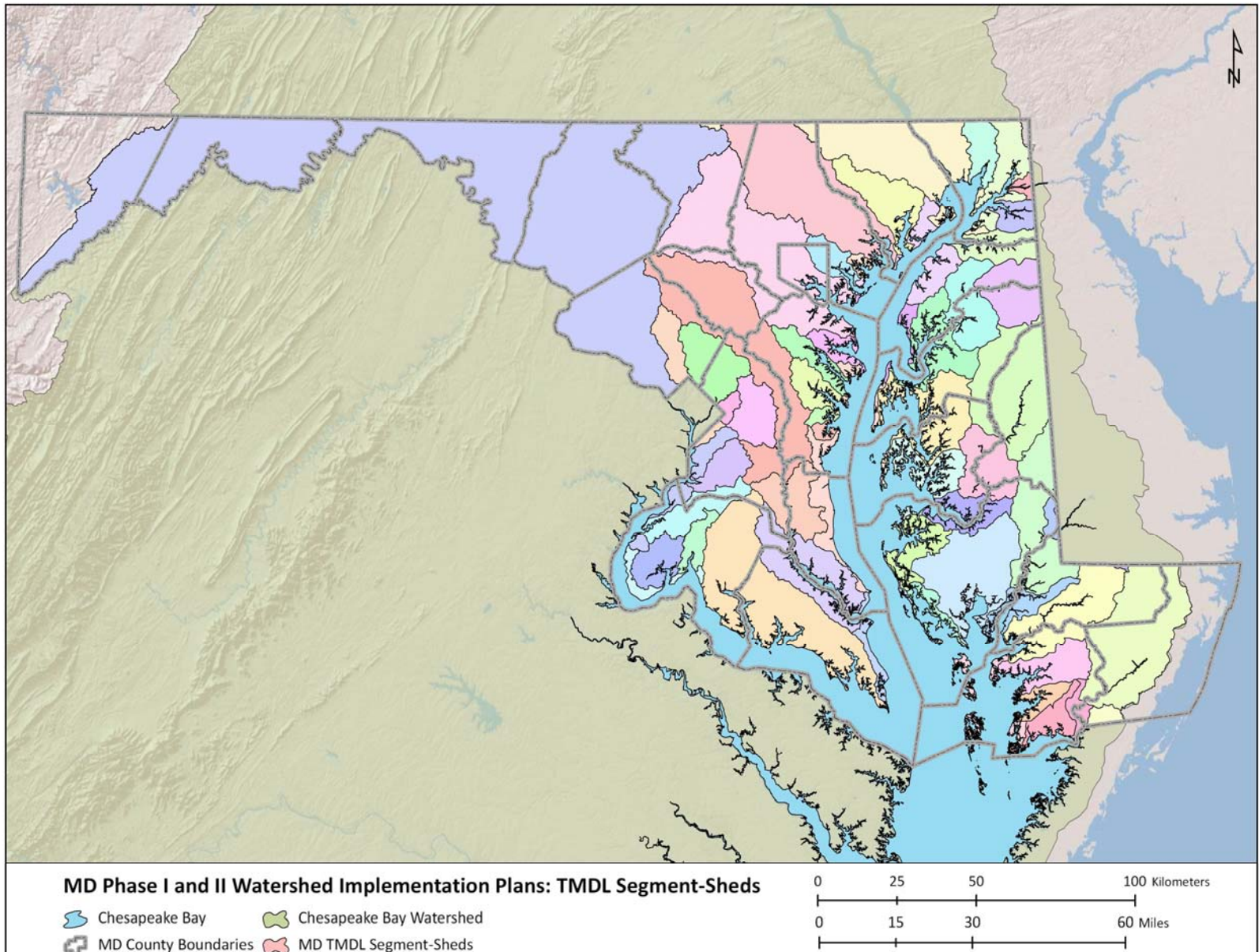


# Bay TMDL Segment-Sheds

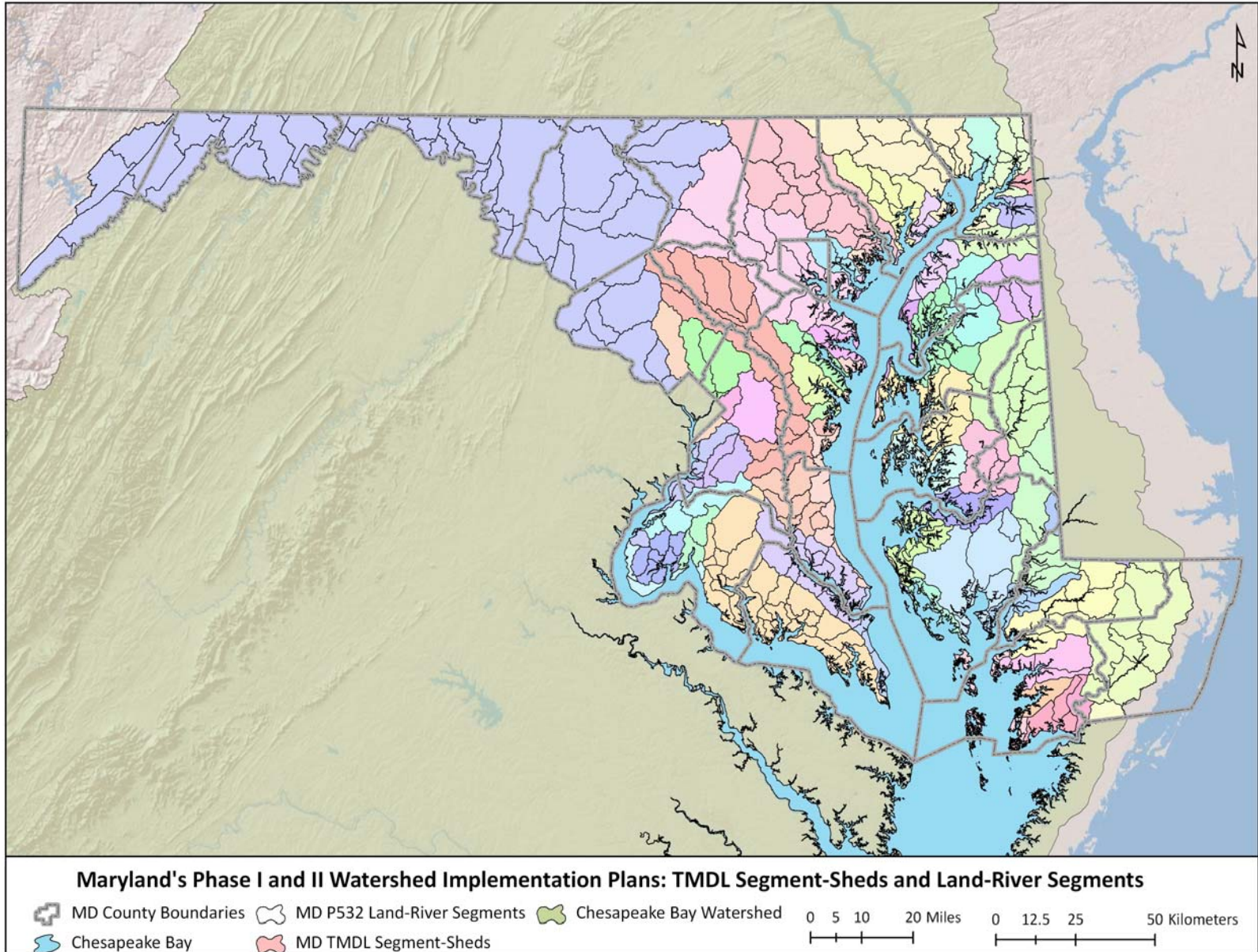




# Bay TMDL Segment-Sheds

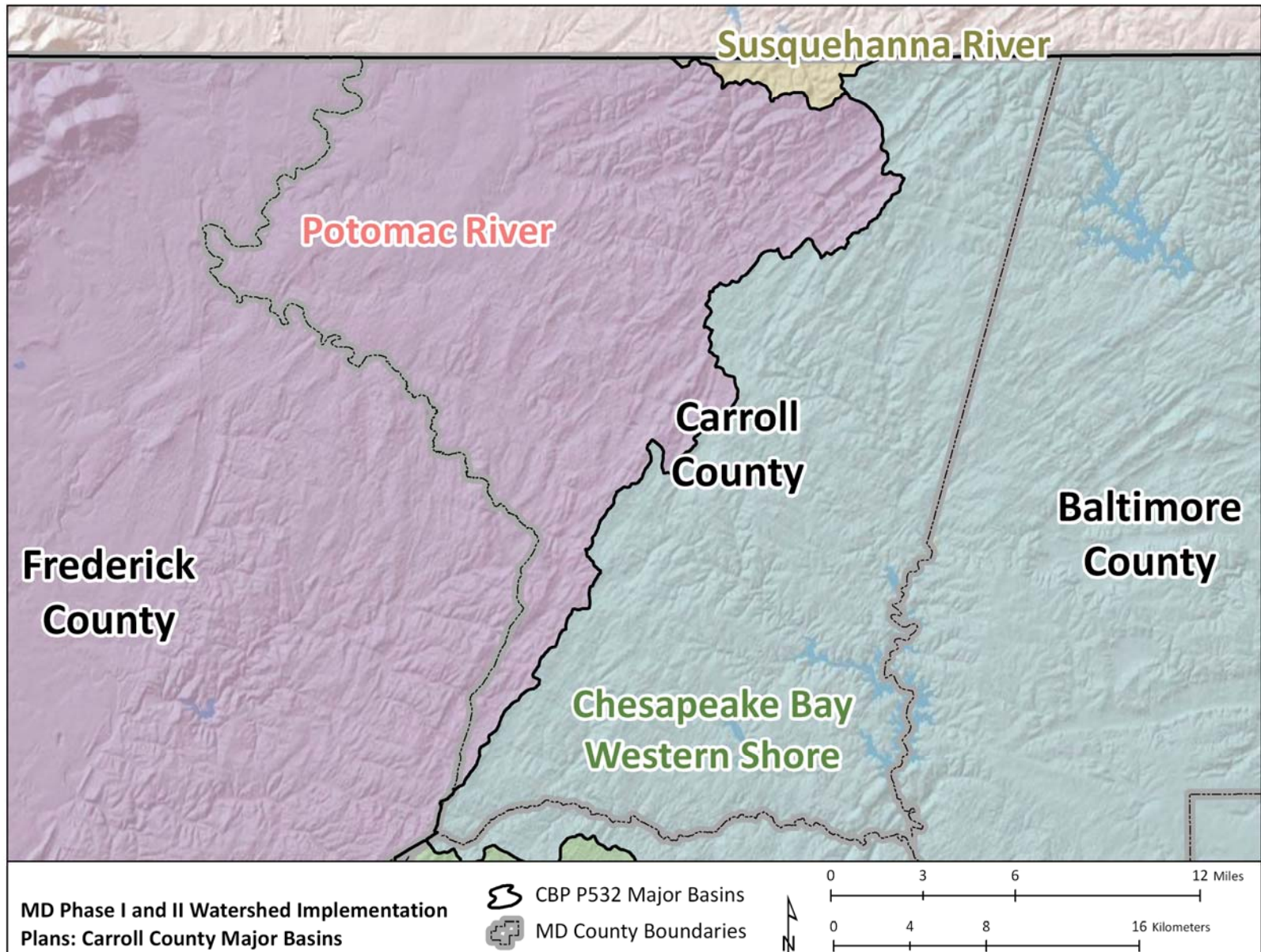


# Land-River Segments



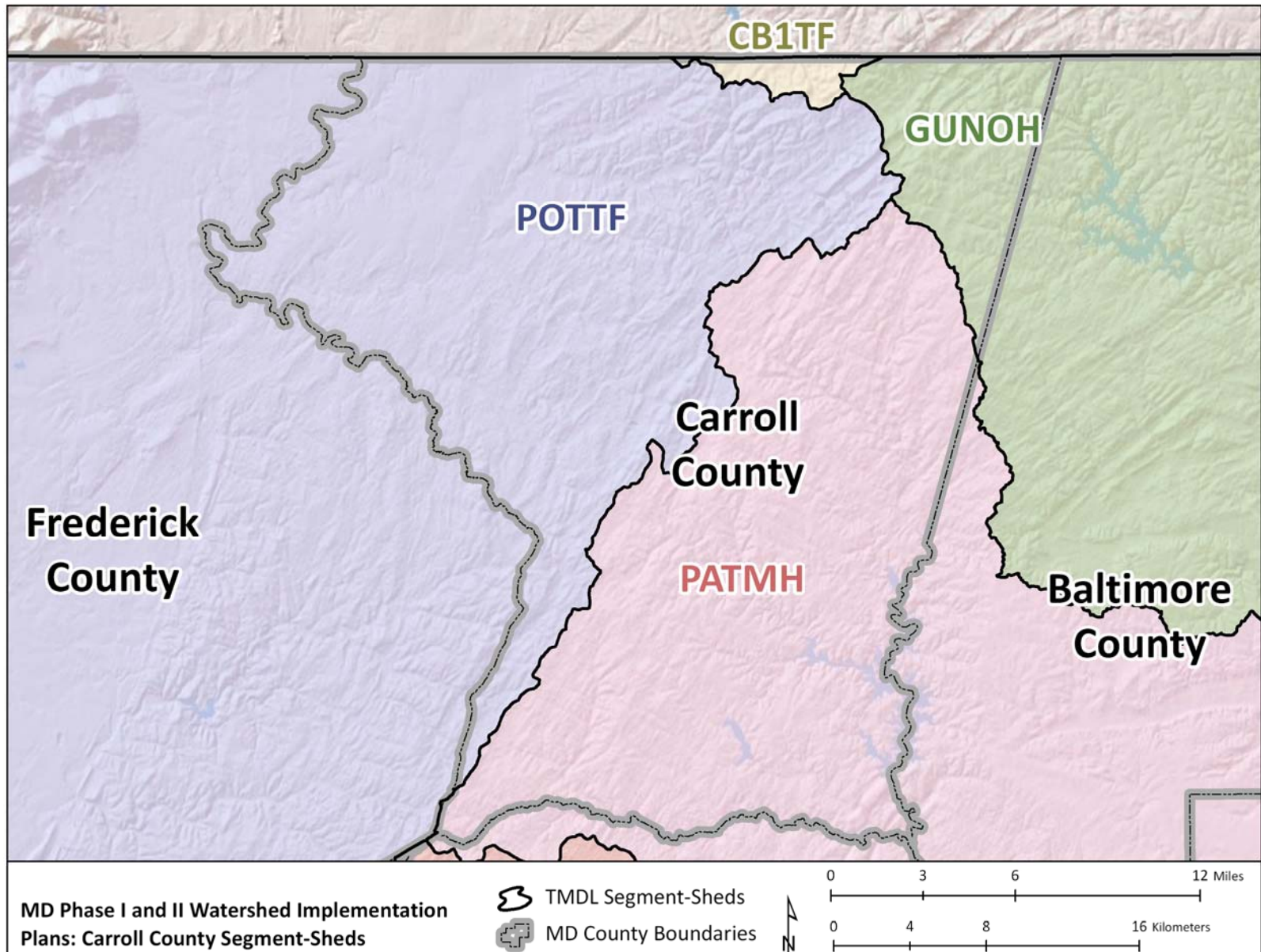


# Carroll County Major Basin



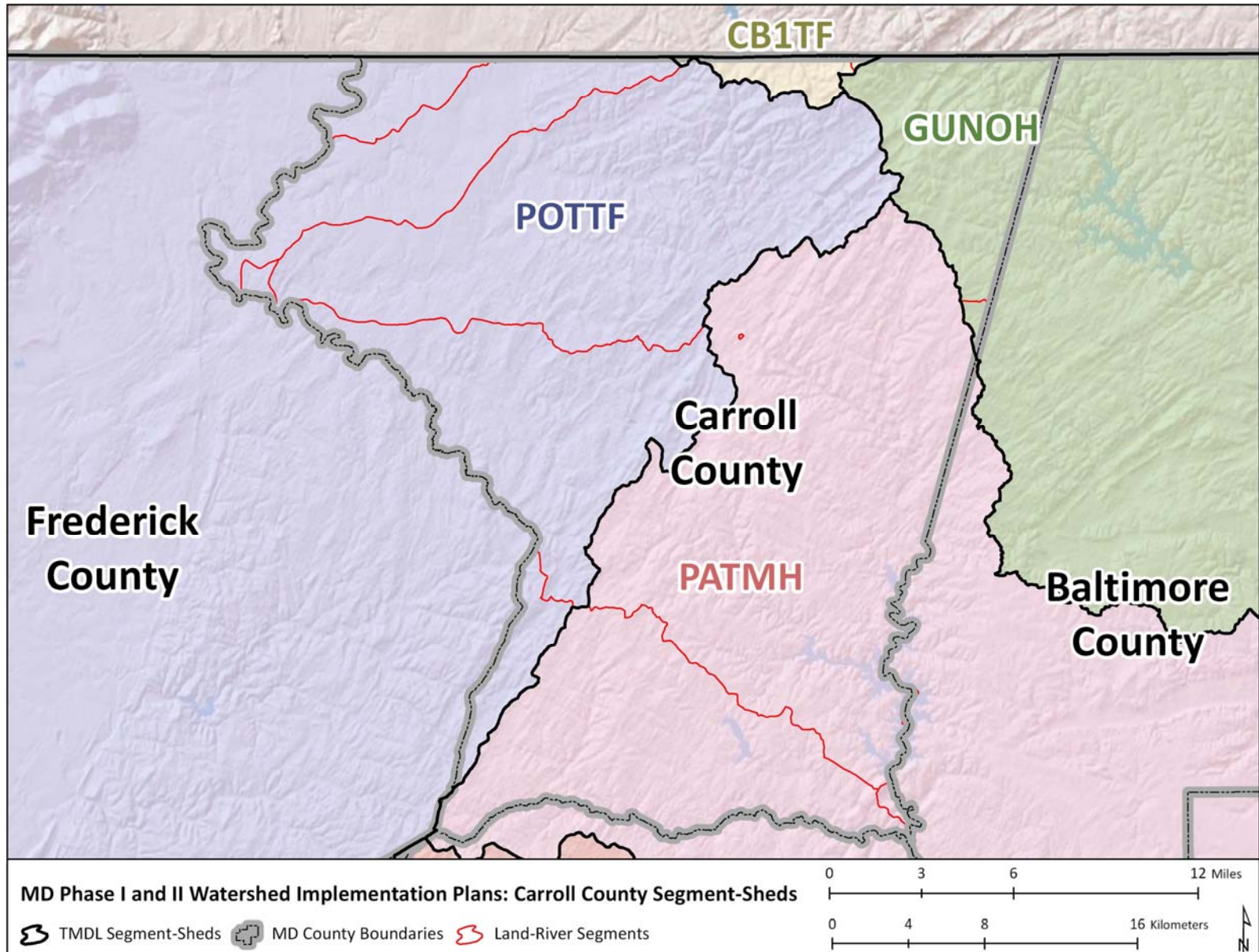


# Carroll County Segment-Shed

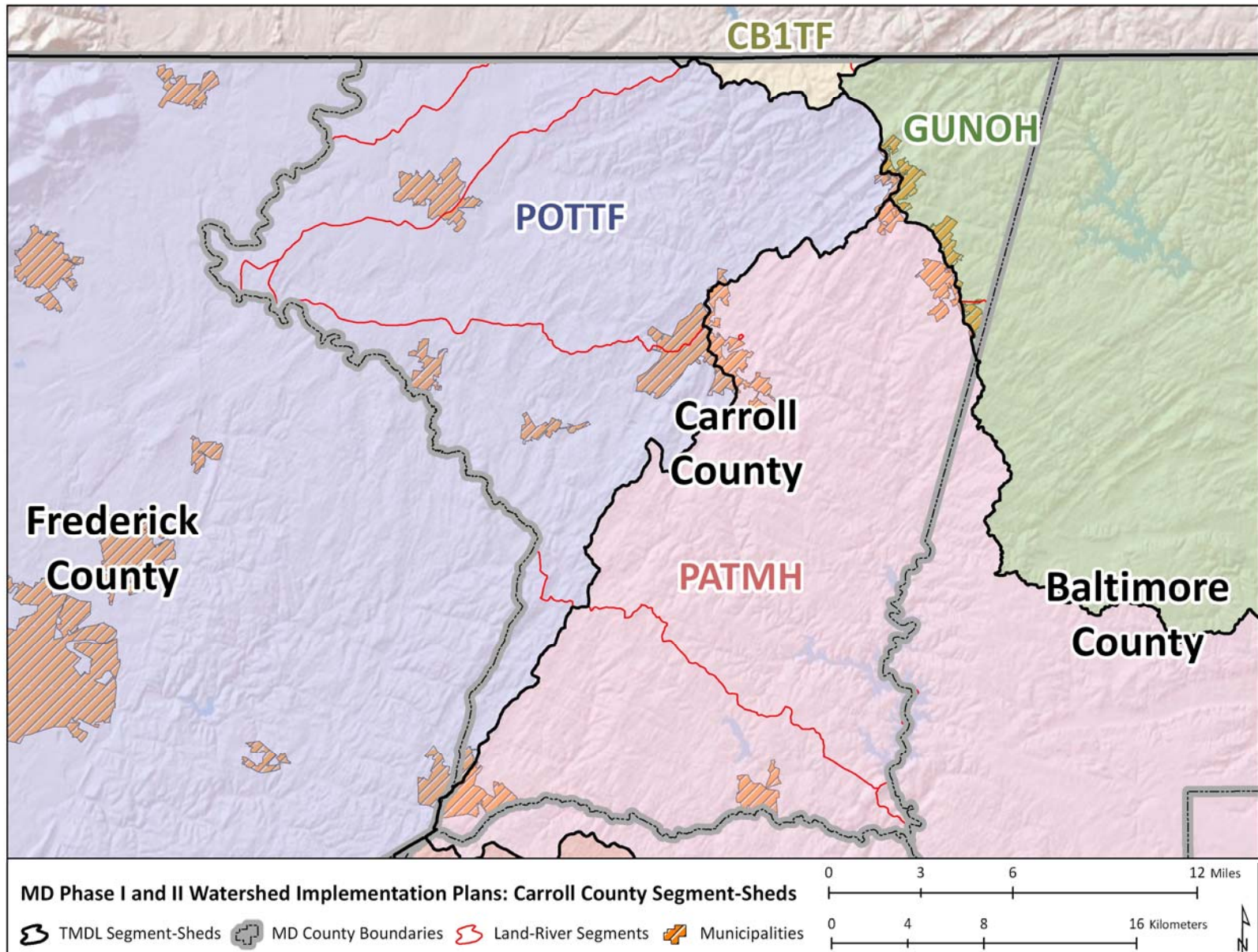




# Carroll County Land-River Segment



# Carroll County Land-River Segment



Questions?



# Overview

- Welcome & Announcements
- CBP Watershed Model Scales
- **Allocation Methodology for Phase II**
- BMP Verification





# Allocation Methodology

---

- Presentation

# Overview

- Welcome & Announcements
- CBP Watershed Model Scales
- Allocation Methodology for Phase II
- **BMP Verification**





# BMP Verification

---

- Presentation

Questions?



# **Maryland Department of the Environment**

## **Science Services Administration**

**1800 Washington Boulevard | Baltimore, MD 21230-1718  
410-537-3000 | TTY Users: 1-800-735-2258  
[www.mde.state.md.us](http://www.mde.state.md.us)**

