

# ANTIETAM CREEK WATERSHED RESTORATION PLAN



Photo by: Jen Goelnitz <http://www.flickr.com/photos/goelnitz/4609441907>



Canaan Valley Institute

**September 17, 2012**

Creation of this watershed plan was a cooperative effort by:

The Washington County Soil Conservation District  
The Board of County Commissioners of Washington County  
The Antietam Creek Watershed Alliance  
The Canaan Valley Institute  
and  
Maryland Department of the Environment  
Science Services Administration  
TMDL Implementation Division

4/27/2013

# ANTIETAM CREEK WATERSHED RESTORATION PLAN

- DEVELOPED TO ADDRESS LOCAL, SEDIMENT AND FECAL COLIFORM TMDL'S
- LOCALLY DRIVEN, SUPPORTED BY STATE AND LOCAL PARTNERS, WASHINGTON COUNTY, MDE CVI AND ACWA WERE KEY
- GRANT FUNDING PROVIDED BY MDE, 319 PROGRAM AND WASHINGTON COUNTY
- LEAD AGENCY WAS SOIL CONSERVATION DISTRICT

# COST OF PLAN DEVELOPMENT

- COST OF PLAN DEVELOPMENT

– 319 GRANT- \$29,265

– WASH CO. - \$19,510

– SCD (IN KIND)- \$7,920

– **TOTAL** **\$56,695**

# PLAN ACTION ITEMS FOR PHASE I

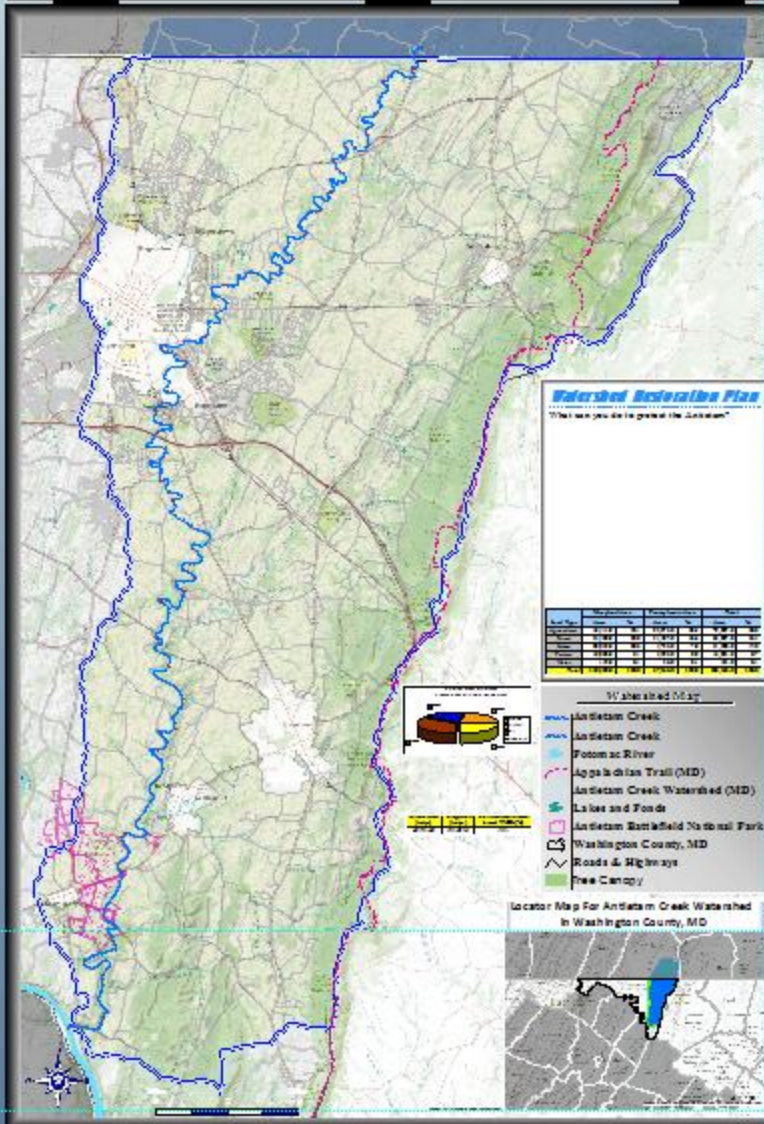
- OUTREACH AND EDUCATION
  - INFORMATION KIOSKS- 10 KIOSKS
  - PET WASTE CAMPAIGN
  - LANDOWNER IMPLEMENTATION OUTREACH
  - COMMUNITY EVENTS
  - WATERSHED AND WIP SPECIFIC PUBLICATIONS
  - UTILIZE EXISTING OUTREACH MATERIALS

# ANTIETAM CREEK WATERSHED

**What is a Watershed?** It is an area of land that all drains to the same water body

Total Stream Length (PA & MD) — 24 miles  
 Stream Length in Washington County, MD — 12 miles  
 Total Watershed Area (PA & MD) — 290 square mi.  
 Watershed Area in Washington County, MD — 133 square mi.  
 Sub-watersheds (w/ Beaver Creek) — 17

Approx. Population in Watershed — 23,000 people  
 Approx. Load of Sediment — 42,187.6 (tons/yr)  
 Approx. Load of Nephritis — 12,230 (lbs/yr)  
 Approx. Load of Total Phosphorus — 3,400,308 (Pounds NTP in 500 lbs/yr)



## Did you know?!

The Antietam Creek has been identified as being too polluted with sediment, fecal bacteria, and nutrients. The County Government, in partnership with Antietam Creek Watershed Alliance and others, has developed a "Watershed Restoration Plan" for the Antietam. To learn about the Plan and the steps being taken to provide County residents with clean water, please call: 1 (202) 312-2600 or 1 (202) 797-8621 ext. 2.



## The Antietam Creek

A Historical and Modern Treasure



The Antietam Creek has been identified as being too polluted with sediment, fecal bacteria, and nutrients. The County Government, in partnership with Antietam Creek Watershed Alliance and others, has developed a "Watershed Restoration Plan" for the Antietam. To learn about the Plan and the steps being taken to provide County residents with clean water, please call: 1 (202) 312-2600 or 1 (202) 797-8621 ext. 2.

The Antietam Creek is a treasure. It is a historical and modern treasure. It is a place where we can enjoy the outdoors and the beauty of nature. It is a place where we can learn about our history and the importance of clean water. It is a place where we can all make a difference.

There are many ways you can help protect the Antietam Creek. You can pick up litter, you can use less water, you can use less fertilizer, you can use less pesticides, you can use less oil, you can use less paint, you can use less car wax, you can use less car polish, you can use less car wash soap, you can use less car wash water, you can use less car wash suds, you can use less car wash foam, you can use less car wash bubbles, you can use less car wash suds, you can use less car wash foam, you can use less car wash bubbles.

(MORE WILL BE ADDED)

(MORE WILL BE ADDED)

(MORE WILL BE ADDED)

(MORE WILL BE ADDED)

(MORE WILL BE ADDED)

(MORE WILL BE ADDED)

(MORE WILL BE ADDED)

(MORE WILL BE ADDED)

(MORE WILL BE ADDED)

(MORE WILL BE ADDED)

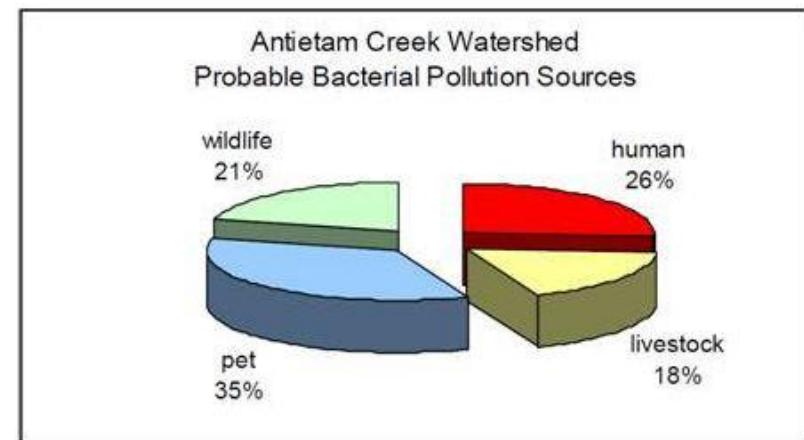
(MORE WILL BE ADDED)



# Pet Waste Management Campaign



PetSmart Will be sponsoring  
70 Pet Waste Stations  
throughout the County &  
offering in-store coupons for  
pet waste management  
products



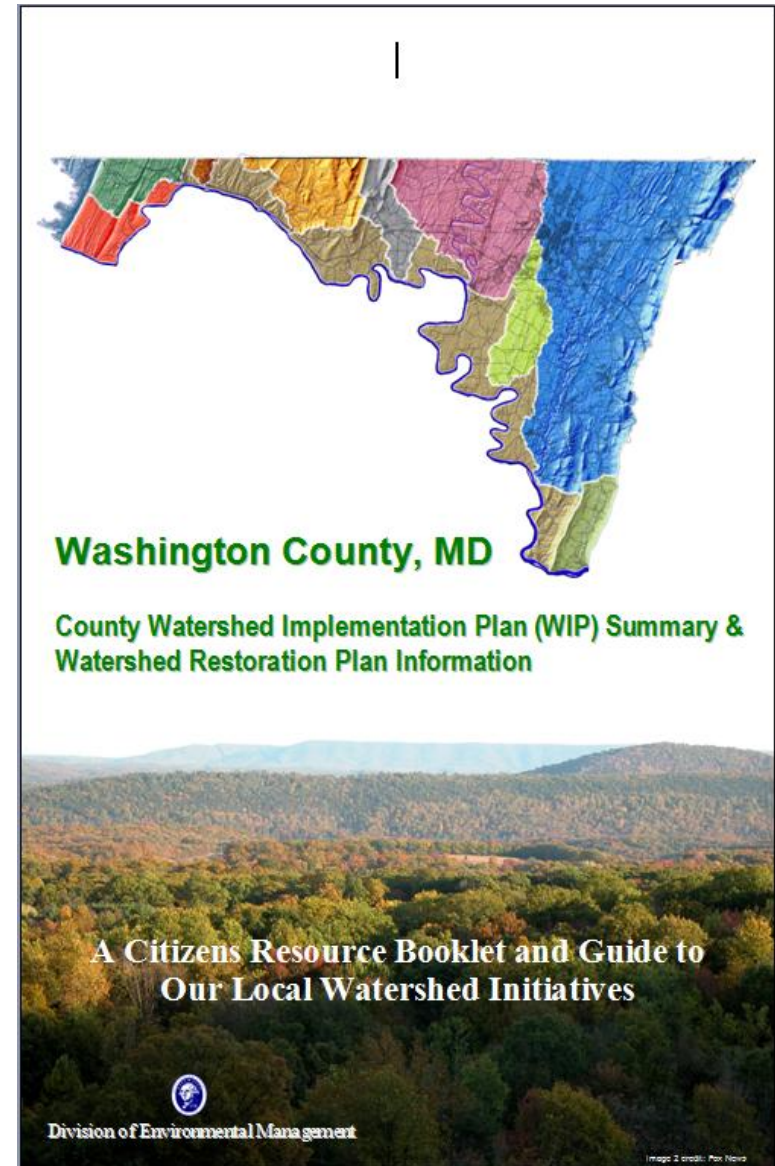
# Community Events

We are looking at and developing several community events with the purpose of raising Awareness about the health of our local water resources.

1. Rain Garden Workshops(?)
2. Inlet Stenciling by volunteer groups
3. ....

# Watershed & WIP Specific Publications

We are developing multiple brochure/pamphlets that will be made available to County residents to help explain “What is being asked of us” (WIP, TMDLs, etc) and provide the readers with an explanation of what the County govt. has done in response to the WIP & TMDLs.

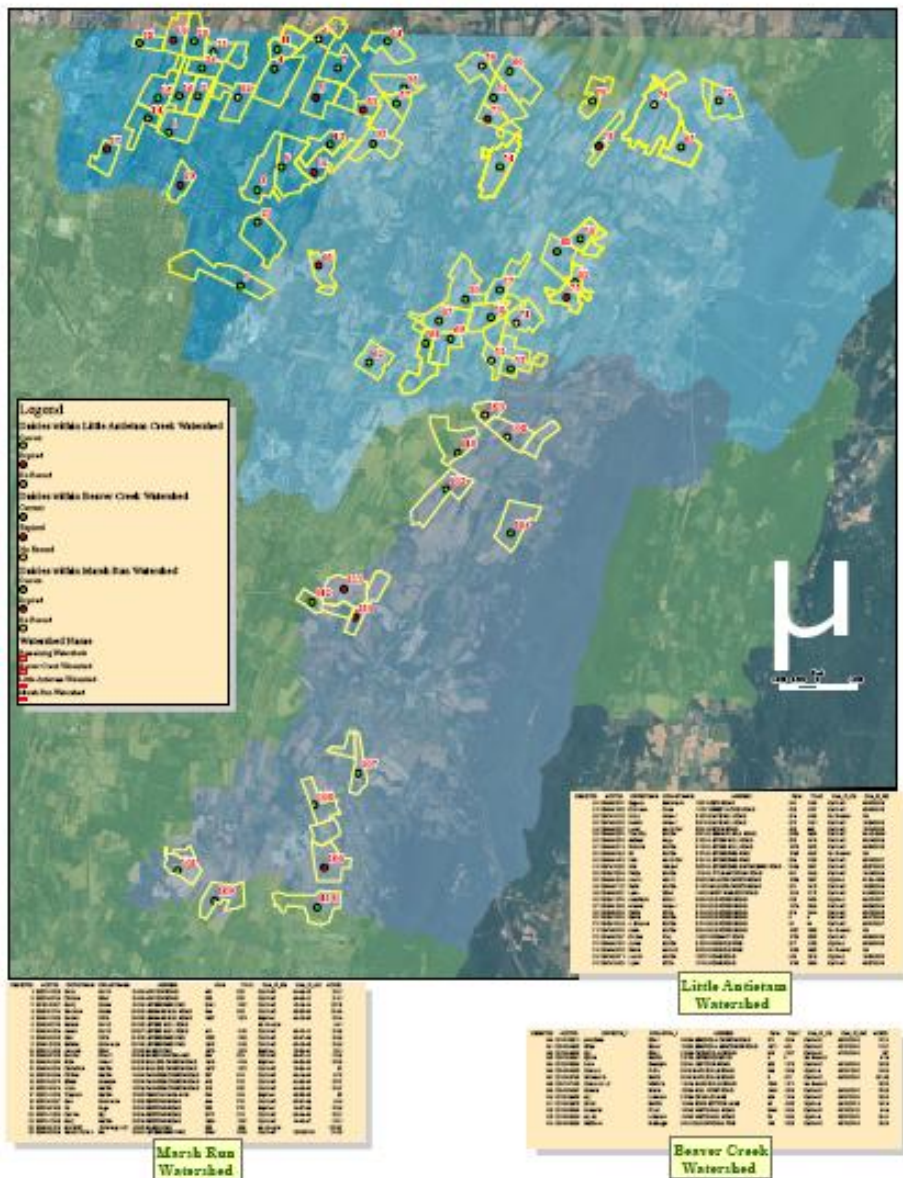


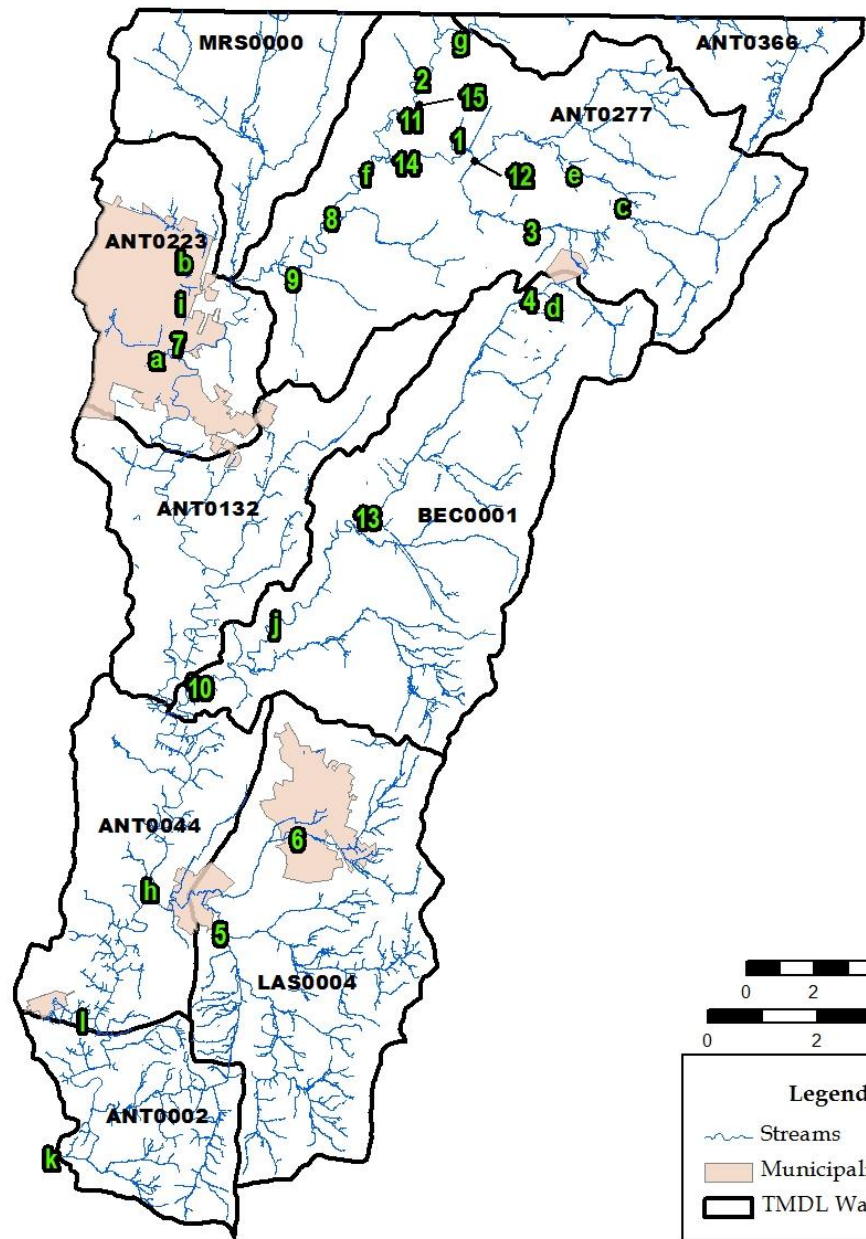


# PLAN ACTION ITEMS FOR PHASE I

- PROJECT IMPLEMENTATION
  - AGRICULTURAL PLANNING AND BMP INSTALLATION
    - CONSERVATION PLANS FOR 80% OF FARMS IN 3 SUB WATERSHEDS
- STREAM RESTORATION PROJECTS
  - 30 IDENTIFIED-15 PRIORITIZED
  - PRIORITY 1 PROJECT COST \$325,000, SEEKING GRANTS

# Dairy Farms Within Marsh Run, Little Antietam, Beaver Creek Watersheds





**Legend**

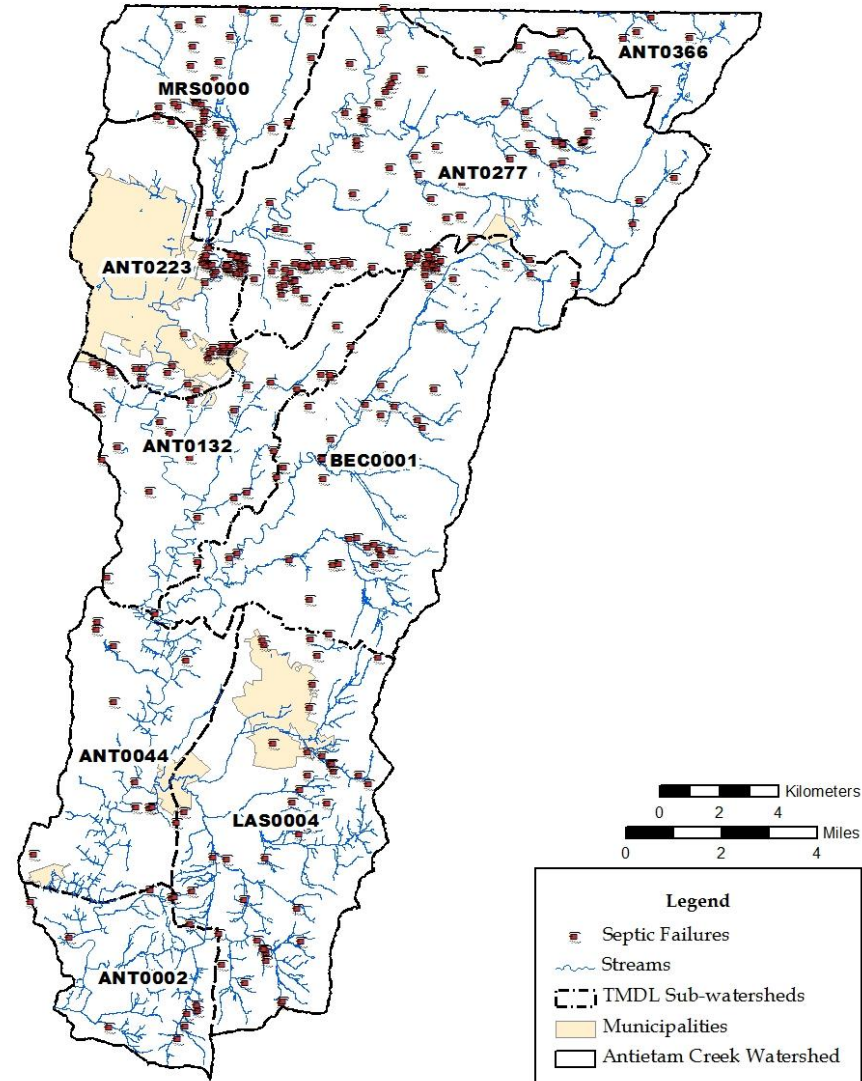
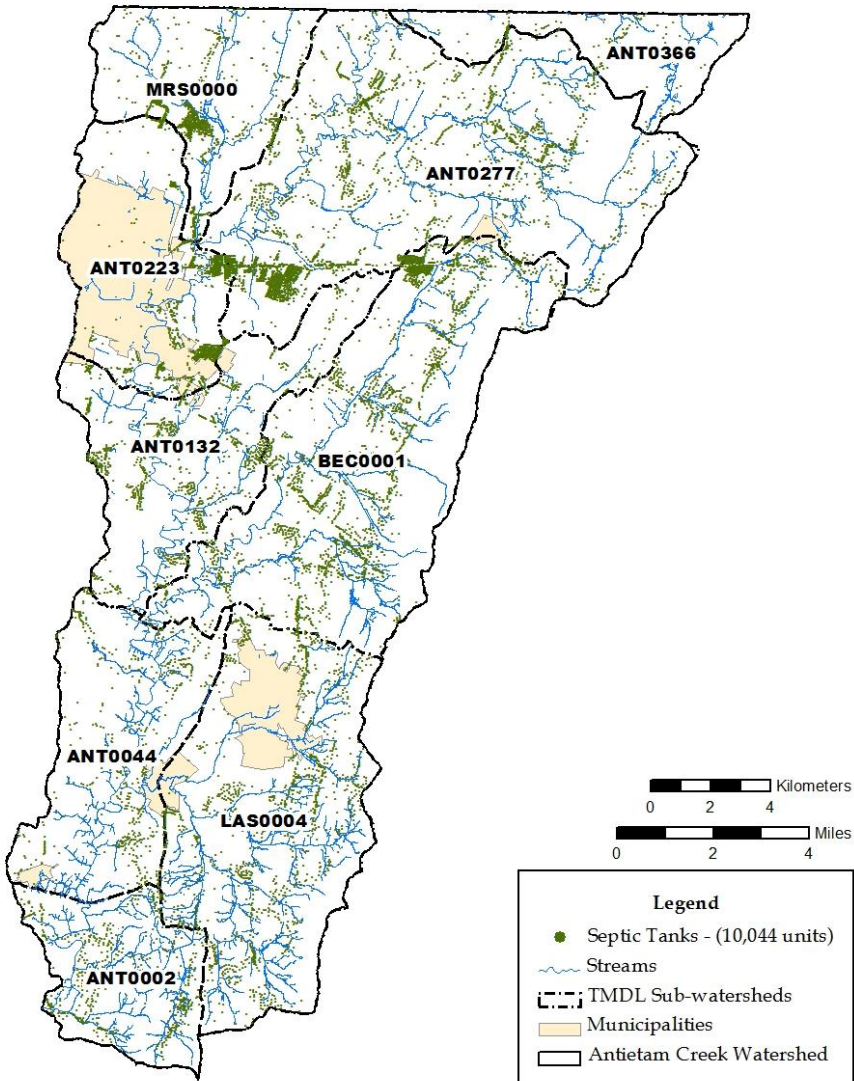
- Streams
- Municipalities
- TMDL Watersheds



Prepared by:  
 Washington County Maryland  
 Division of Environmental Management  
 16232 Elliott Parkway  
 Williamsport, MD 21795-4083  
 Date: March 21, 2012

Data Sources:  
 Watersheds: MD Dept. of Natural Resources  
 Streams: U.S. Geologic Survey  
 Stream Restoration Sites: Washington County Soil  
 Conservation District

# Septics



Prepared by:  
Washington County Maryland  
Division of Environmental Management  
16232 Elliott Parkway  
Williamsport, MD 21795-4083  
Date: March 21, 2012

Data Sources:  
Watersheds: MD Dept. of Natural Resources  
Streams: U.S. Geologic Survey  
Stream Restoration Sites: Washington County Soil  
Conservation District



Prepared by:  
Washington County Maryland  
Division of Environmental Management  
16232 Elliott Parkway  
Williamsport, MD 21795-4083  
Date: April 3, 2012

Data Sources:  
Watersheds: MD Dept. of Natural Resources  
Tax Parcels: Washington Co. Planning & Zoning  
Septic and Well Failure: Washington Co. Health Dept.  
(2006-2011)

# OUR PLAN SUPPORTS AND COMPLIMENTS THE COUNTY WIP PLAN CAN BE FOUND AT:

[http://www.conservationplace.com/Antietam%20Creek%20Plan\\_Final%209\\_17\\_12.pdf](http://www.conservationplace.com/Antietam%20Creek%20Plan_Final%209_17_12.pdf)

OR AT MDE'S WEBSITE

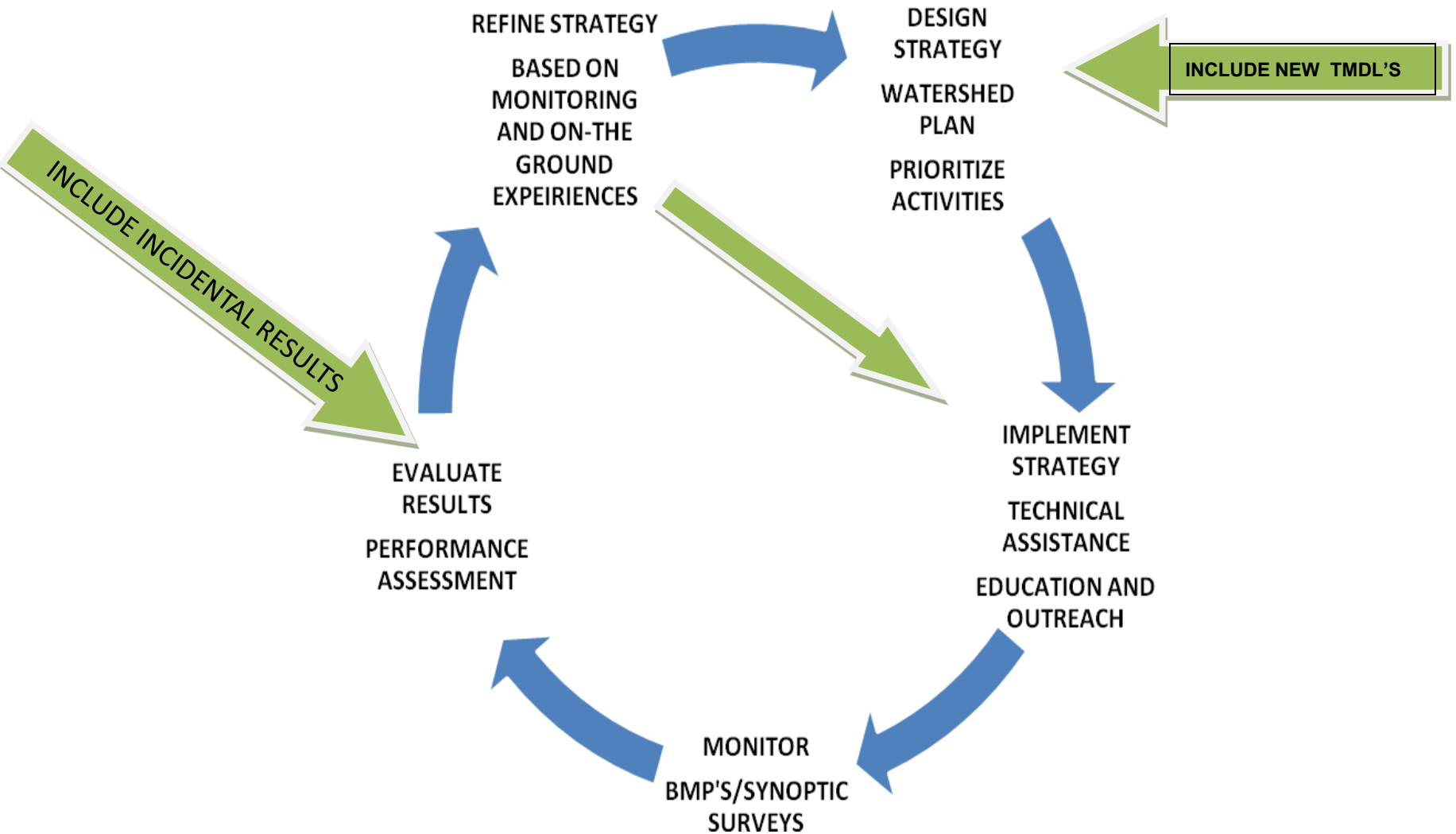
<http://www.mde.maryland.gov/programs/water/319nonpointsource/pages/antietamcreekwrp.aspx>

OR EMAIL ALEX

[areed@washco-md.net](mailto:areed@washco-md.net)

DEM Website Coming Soon!!!

# ADAPTIVE MANAGEMENT AND IMPLEMENTATION



*Thank  
you!  
Questions?*

