

Figure B1. Observed and Simulated Maximum Chla Concentrations, TR1, Calibration Scenario, Triadelphia Reservoir

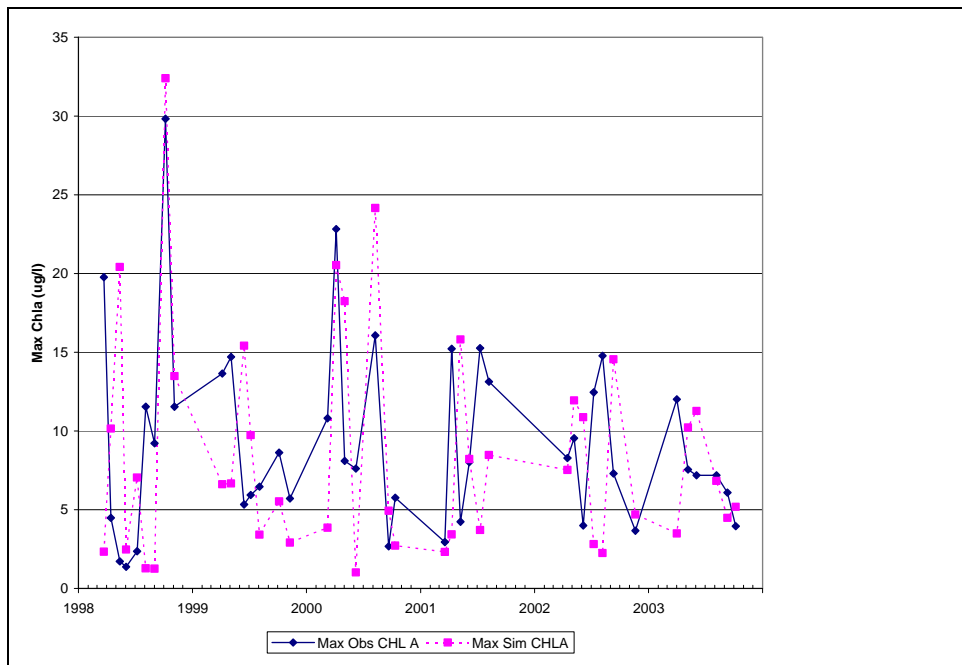


Figure B2. Observed and Simulated Maximum Chla Concentrations, RG1, Calibration Scenario, Rocky Gorge Reservoir

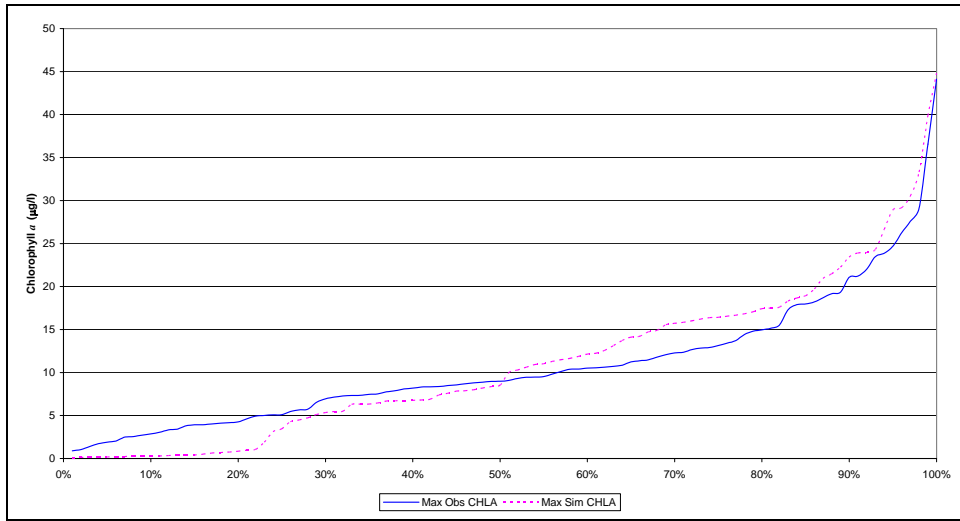


Figure B3. Observed and Simulated Cumulative Distribution of Chla Concentrations, Calibration Scenario, Triadelphia Reservoir

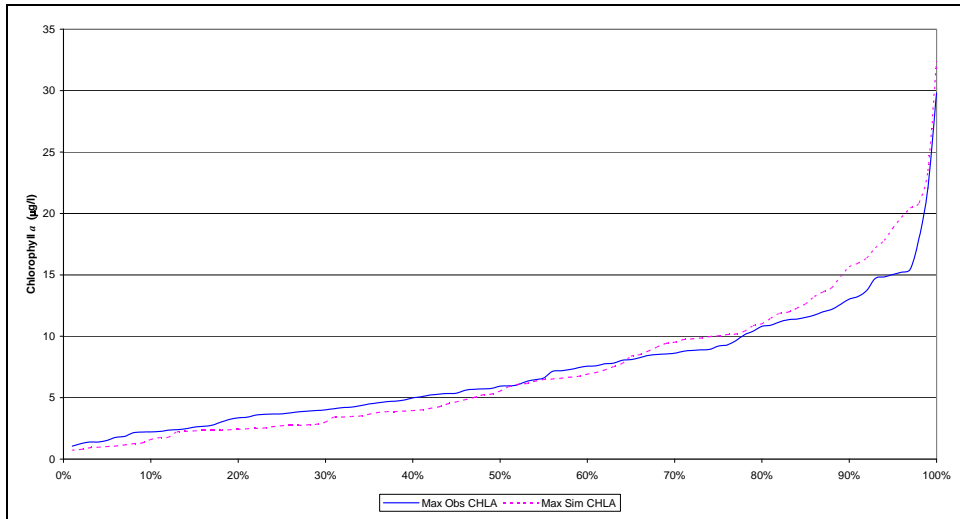


Figure B4. Observed and Simulated Cumulative Distribution of Chla Concentrations, Calibration Scenario, Rocky Gorge Reservoir

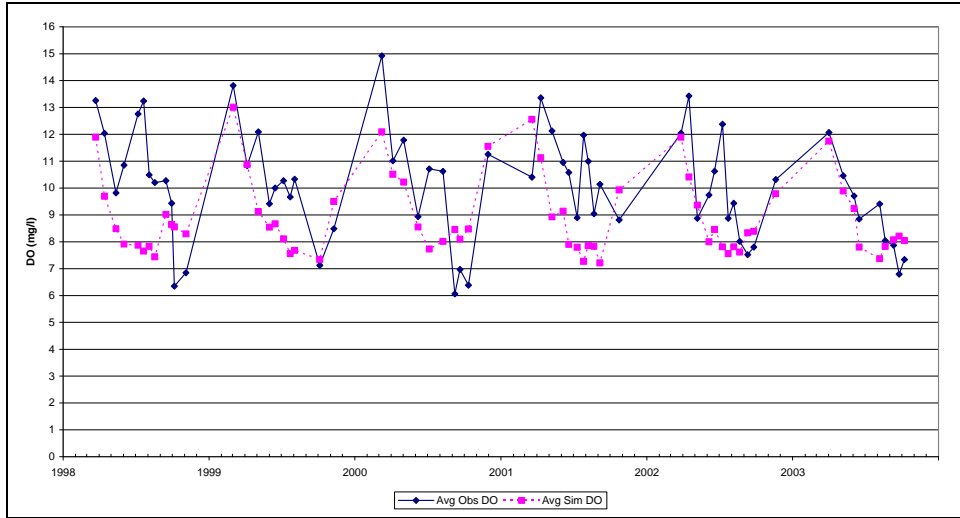


Figure B5. Observed and Simulated Average Surface DO Concentrations, TR1, Calibration Scenario, Triadelphia Reservoir

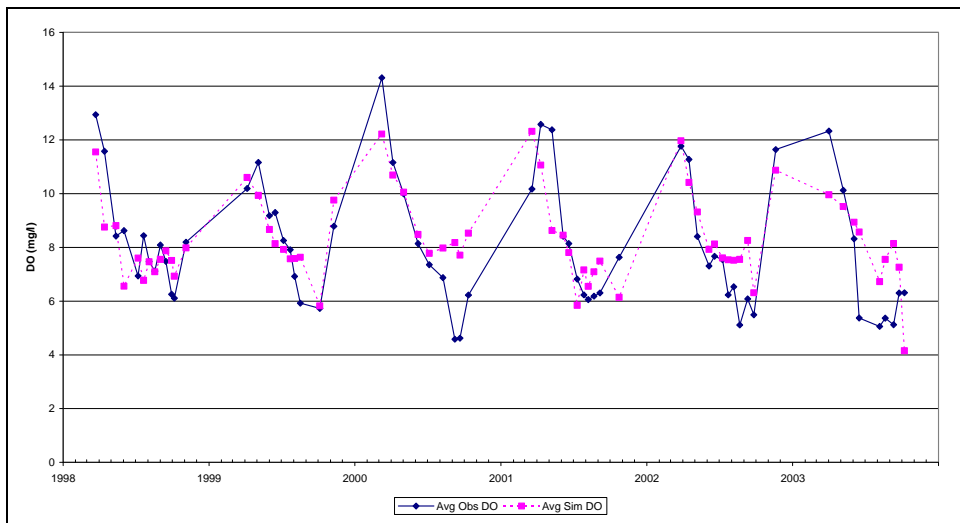


Figure B6. Observed and Simulated Average Surface DO Concentrations, RG1, Calibration Scenario, Rocky Gorge Reservoir

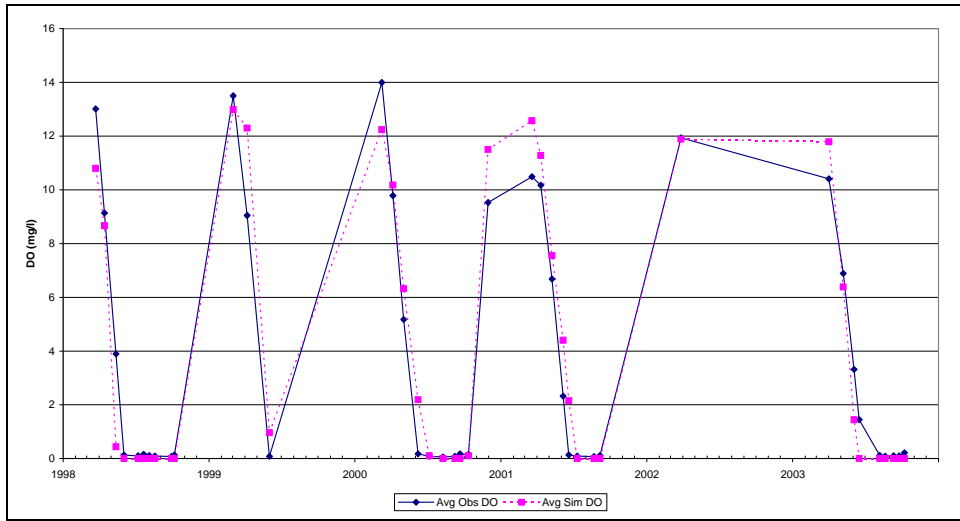


Figure B7. Observed and Simulated Average Bottom DO Concentrations, TR1, Calibration Scenario, Triadelphia Reservoir

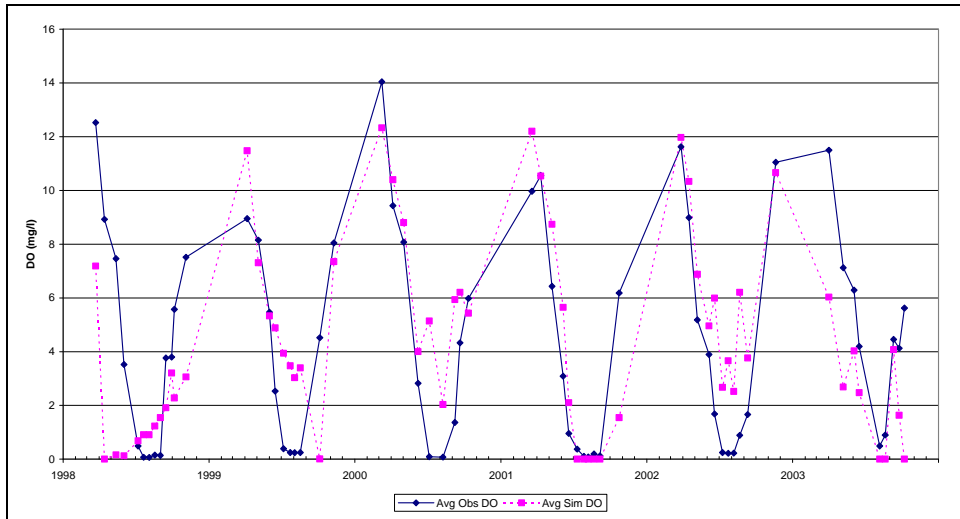


Figure B8. Observed and Simulated Average Bottom DO Concentrations, RG1, Calibration Scenario, Rocky Gorge Reservoir

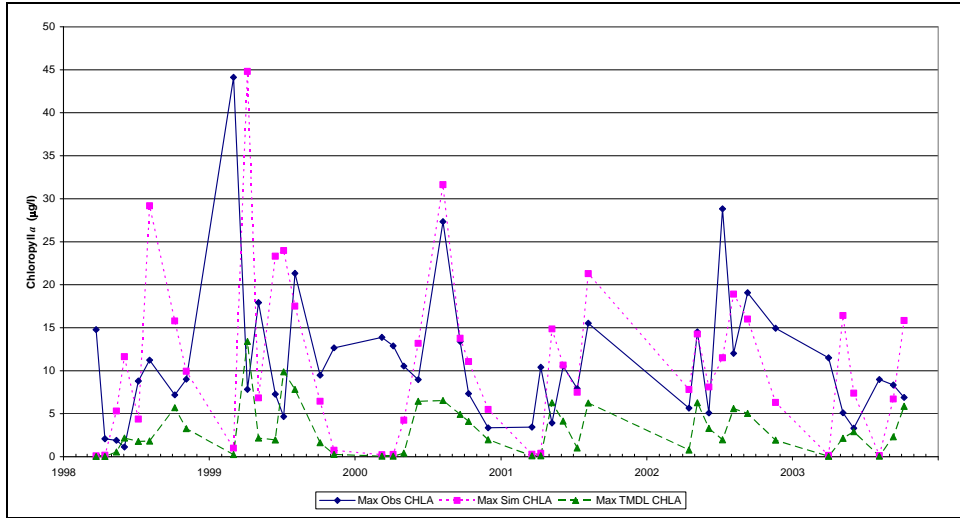


Figure B9. Observed and Simulated Maximum Chla Concentrations, TR1, TMDL Scenario, Triadelphia Reservoir

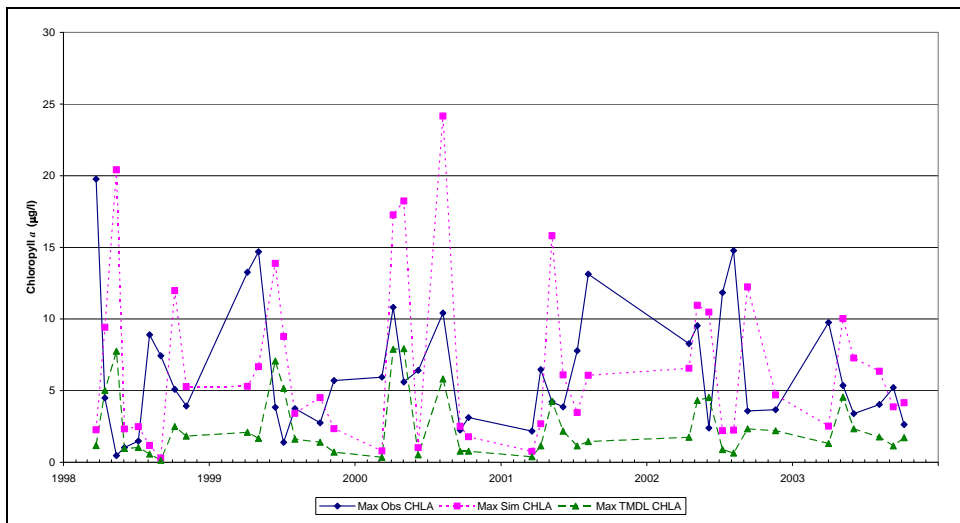


Figure B10. Observed and Simulated Maximum Chla Concentrations, RG1, TMDL Scenario, Rocky Gorge Reservoir

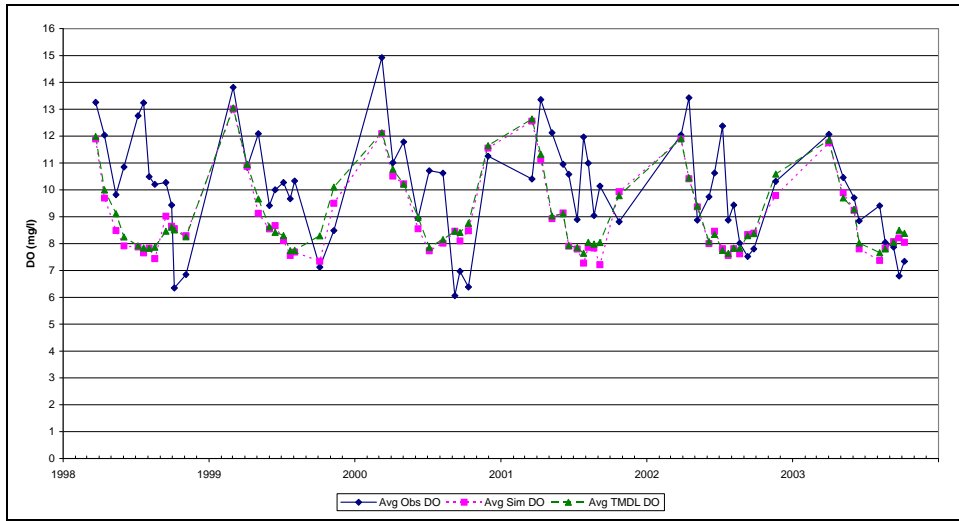


Figure B11. Observed and Simulated Average Surface DO Concentrations, TR1, TMDL Scenario, Triadelphia Reservoir

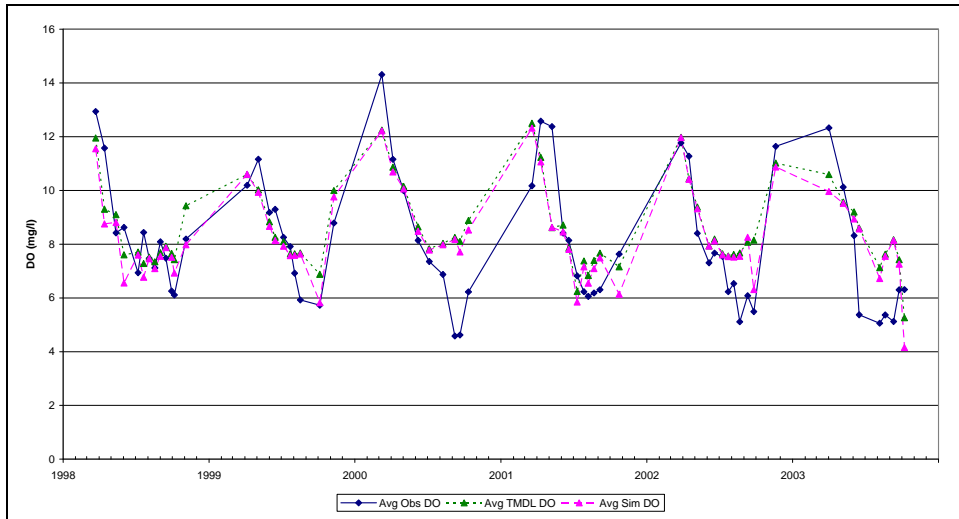


Figure B12. Observed and Simulated Average Surface DO Concentrations, RG1, TMDL Scenario, Rocky Gorge Reservoir

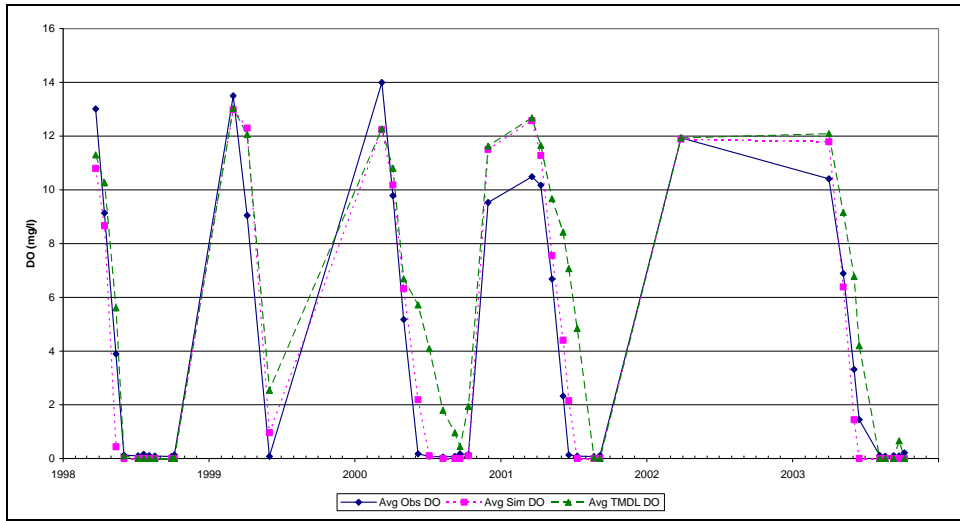


Figure B13. Observed and Simulated Average Bottom DO Concentrations, TR1, TMDL Scenario, Triadelphia Reservoir

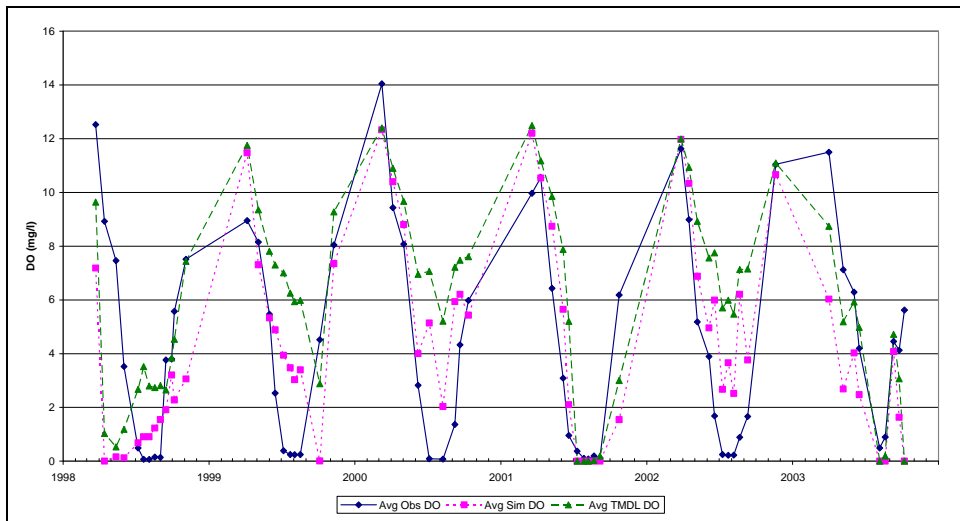


Figure B14. Observed and Simulated Average Bottom DO Concentrations, RG1, TMDL Scenario, Rocky Gorge Reservoir