

# Wasted food and food recovery in Maryland

Carrie Burns,  
Johns Hopkins Center for a Livable Future  
Food System Mapping



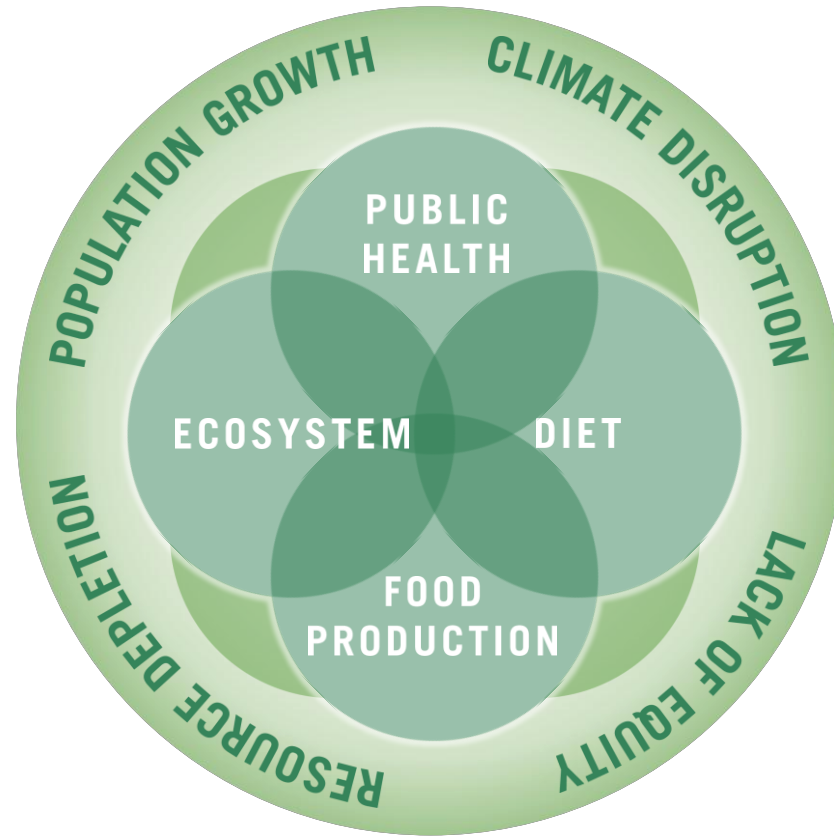
JOHNS HOPKINS  
CENTER *for* A LIVABLE FUTURE

# Mission

*The mission of the Center for a Livable Future is to:*

- promote research and to develop and communicate information about the complex interrelationships among diet, food production, environment and human health,
- advance an ecological perspective in reducing threats to the health of the public
- promote policies that protect health, the global environment and the ability to sustain life for future generations.

# Concept Model



# What we do

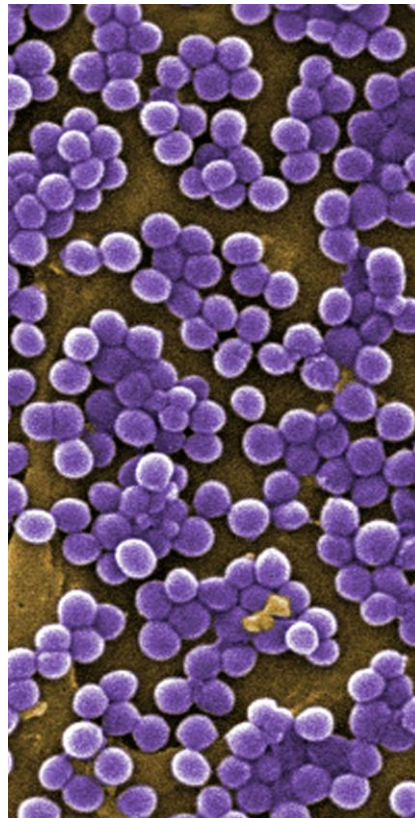
- Support and conduct interdisciplinary **research** through collaboration with experts in a variety of fields
- **Educate** and **train** students and professionals through doctoral fellowships, graduate courses and curricula
- **Communicate** projects and activities to a wide range of internal and external CLF constituents
- Generate resource materials and provide **technical expertise** for policy, advocacy, and outreach initiatives
- **Partner** with organizations which complement the Center's resources and expertise **in order to improve our food system overall and strengthen local and regional capacity.**

# Program Areas

## Food System Policy and Public Health



## Food Production and Public Health



## Food Communities and Public Health



## Food System Sustainability and Public Health





# Food System Sustainability and Public Health



# Global Greenhouse Gas Emissions (2005)

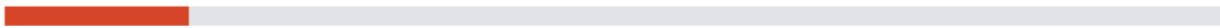


# About 1/3 food globally is lost or wasted

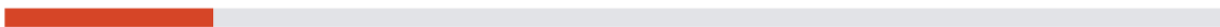
## Globally, around a third of all food is lost or wasted

Share of total food lost or wasted by region, % of calories lost or wasted

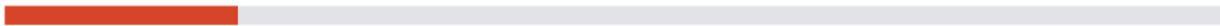
15% Latin America



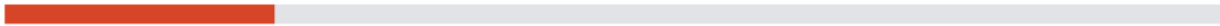
17% South and Southeast Asia



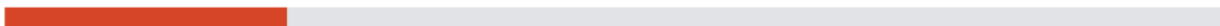
19% North Africa, West and Central Asia



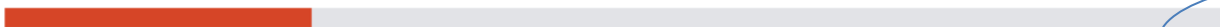
22% Europe



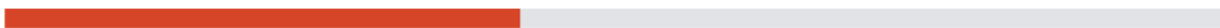
23% Sub-Saharan Africa



25% Industrialised Asia



42% North America and Oceania





# By the numbers: wasted food & food insecurity in Maryland

- Wasted food:
  - Nationally: about 40% of all food harvested in the US
  - Maryland: 700,000 tons (based on % of US population)
- Food Insecurity:
  - 757,430 food insecure people in Maryland in 2013
- Nearly one ton of wasted food per food insecure person!  
(1848 lbs)

# Food Recovery

- Gathering edible food that would be wasted, for distribution to emergency food programs
- Edible food
  - Older, near sell-by date
  - Imperfect
  - Over-ordering/over-producing

**A  
GROTESQUE  
APPLE**

**A  
DAY  
KEEPS  
THE  
DOCTOR  
AWAY  
AS  
WELL.**

Hermetic  
Inglorious  
Fruit and  
Vegetables  
Organic  
Against  
Food Waste

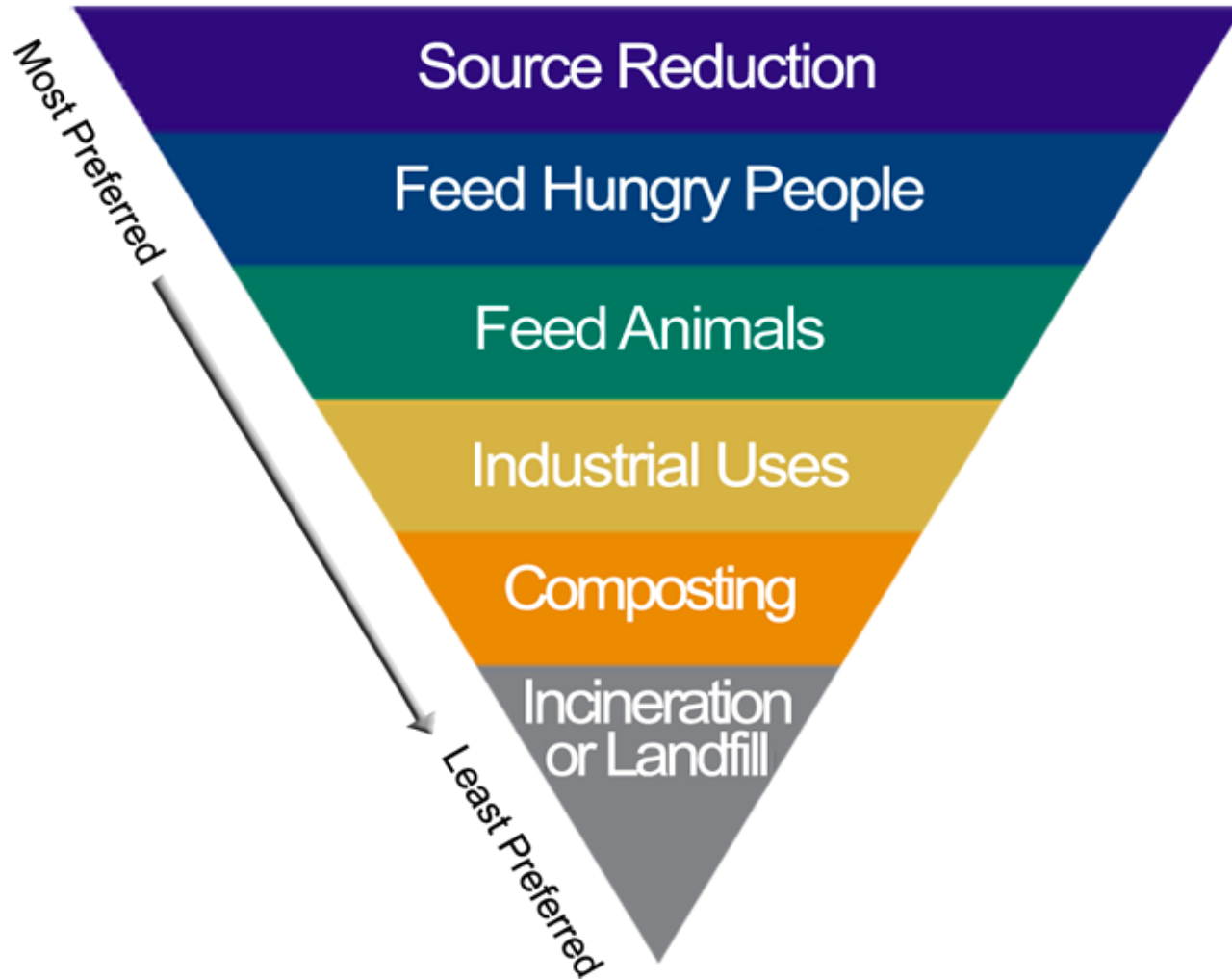


**INGLORIOUS**  
fruits.&vegetables

by **intermarché**

# Food Recovery Programs in Maryland

# Food Recovery Hierarchy (EPA)





The BALTIMORE  
ROOM MACHINE  
COMPANY

GATHER BALTIMORE

BLUE DAN  
PROGRAM

PRIVATE PROPERTY  
UNAUTHORIZED AND UNWARRANTED  
ENTRY IS PROHIBITED BY LAW AND  
PENALIZED BY THE STATE OF  
GREENWOOD ZENITH, INC.  
NO TOLLS IN PLACE  
ALL IN THE INTEREST OF  
THE PUBLIC  
GREENWOOD ZENITH, INC.  
GREENWOOD ZENITH, INC.  
GREENWOOD ZENITH, INC.

MILL VALLEY  
OPEN  
THUR - FRI 11 - 7  
SAT - SUN 9 - 7









# SMADC

SOUTHERN MARYLAND AGRICULTURAL  
DEVELOPMENT COMMISSION

*Shaping the future of farms and food...*

- HOME
- WHAT'S NEW
- ABOUT SMADC
- RESOURCES FOR FARMS
- FOOD/FARMS/NUTRITION
- EDUCATION AND OUTREACH
- SMADC PROGRAMS
- LAND PRESERVATION
- GET THE GUIDES!
- ADVERTISE
- CONTACT SMADC

VIEWING VIA PHONE?  
ENTER OUR MOBILE PORTAL  
HERE



## Hub and Spoke Program

The Hub and Spoke model of food distribution is designed to increase the availability of fresh, locally grown farm food to the hunger community in the five counties of Southern Maryland.

While many local anti-hunger organizations are providing food for those in need, donations to these organizations tend heavily toward packaged



ADVERTISE WITH US

# SMADC

[Click here for more info](#)



**STAR**  
(Starting, Transitioning And Returning)  
**FARMERS' NETWORK**

A Program of SMADC

Tweets [Follow](#)

## FARM TO FOOD B



### Total Number of Partner Farms

FY 2014	70
FY 2013	58
FY 2012	51
FY 2011	28

### Total Number of Pounds

FY 2014	4,613,776
FY 2013	3,314,245
FY 2012	1,711,619
FY 2011	1,282,878



## WHAT IS THE FARM TO FOOD BANK PROGRAM?

The Farm To Food Bank Program engages a network of farms across the state in a partnership to provide hungry Marylanders with fresh, local produce. Through a combination of field gleanings, donations and contract growing, these farms help us supply good,

## WANT TO HELP HARVEST FOR THE HUNGRY?

The Farm to Food Bank Program is now recruiting volunteers for the upcoming harvest.

To learn more about gleanng opportunities on





# HUNGRY HARVEST

HUNGRY HARVEST  
UGLY PRODUCE WITH PURPOSE



MINI HARVEST

FULL HARVEST

SUPER HARVEST





# Food Communities and Public Health



# MARYLAND FOOD SYSTEM MAP

A PROJECT OF JOHNS HOPKINS CENTER FOR A LIVABLE FUTURE

LAUNCH MAP 

- Mission: To use GIS to explore, assess, and inform the food system

# MARYLAND FOOD SYSTEM MAP

A PROJECT OF JOHNS HOPKINS CENTER FOR A LIVABLE FUTURE

LAUNCH MAP 

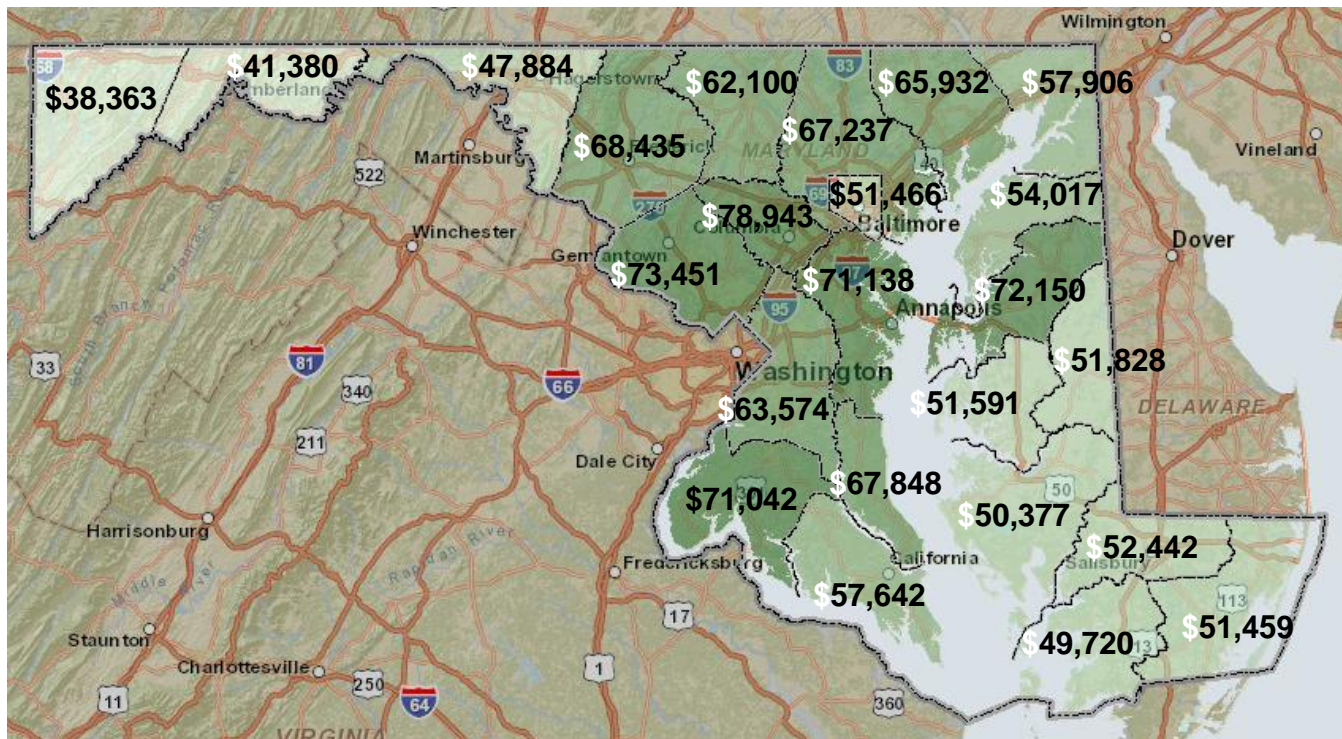
## Data collected:

- ★ Agriculture
- ★ Land Conservation
- ★ Environmental Indicators
- ★ Food Processing and Distribution
- ★ Food Retail
- ★ Nutrition Assistance: SNAP, WIC, School food
- ★ Farm-to-Institution: K-12, Universities, Hospitals
- ★ Demographics, Health
- ★ Community Resources: libraries, recreation centers

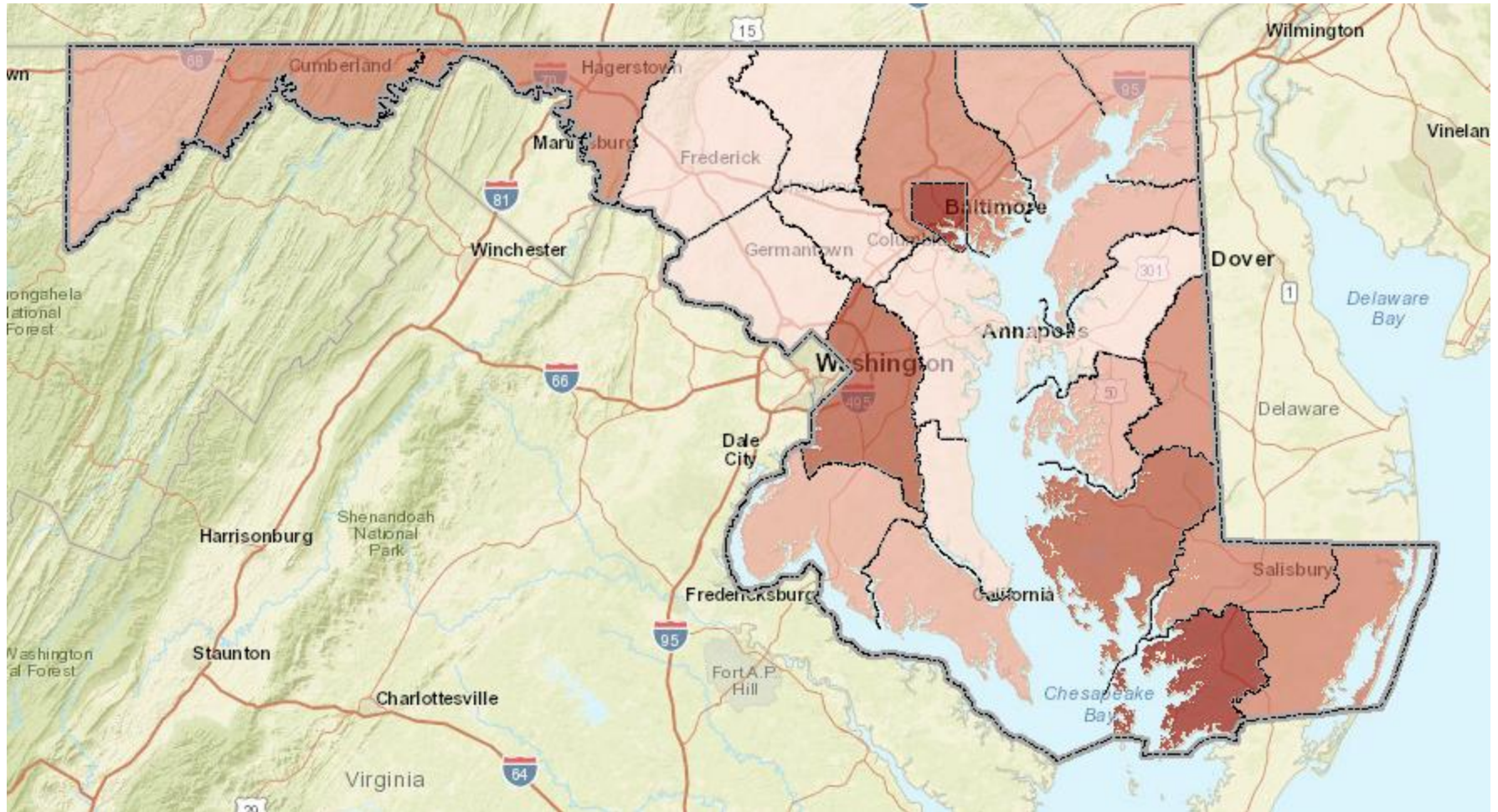


# Where is the need? Self Sufficiency Standard

The amount of income necessary to meet basic needs (including taxes) without public subsidies (e.g., public housing, food stamps, Medicaid or child care) and without private/informal assistance (e.g., free babysitting by a relative or friend, food provided by churches or local food banks, or shared housing).



# Where is the need? Food Insecurity by County



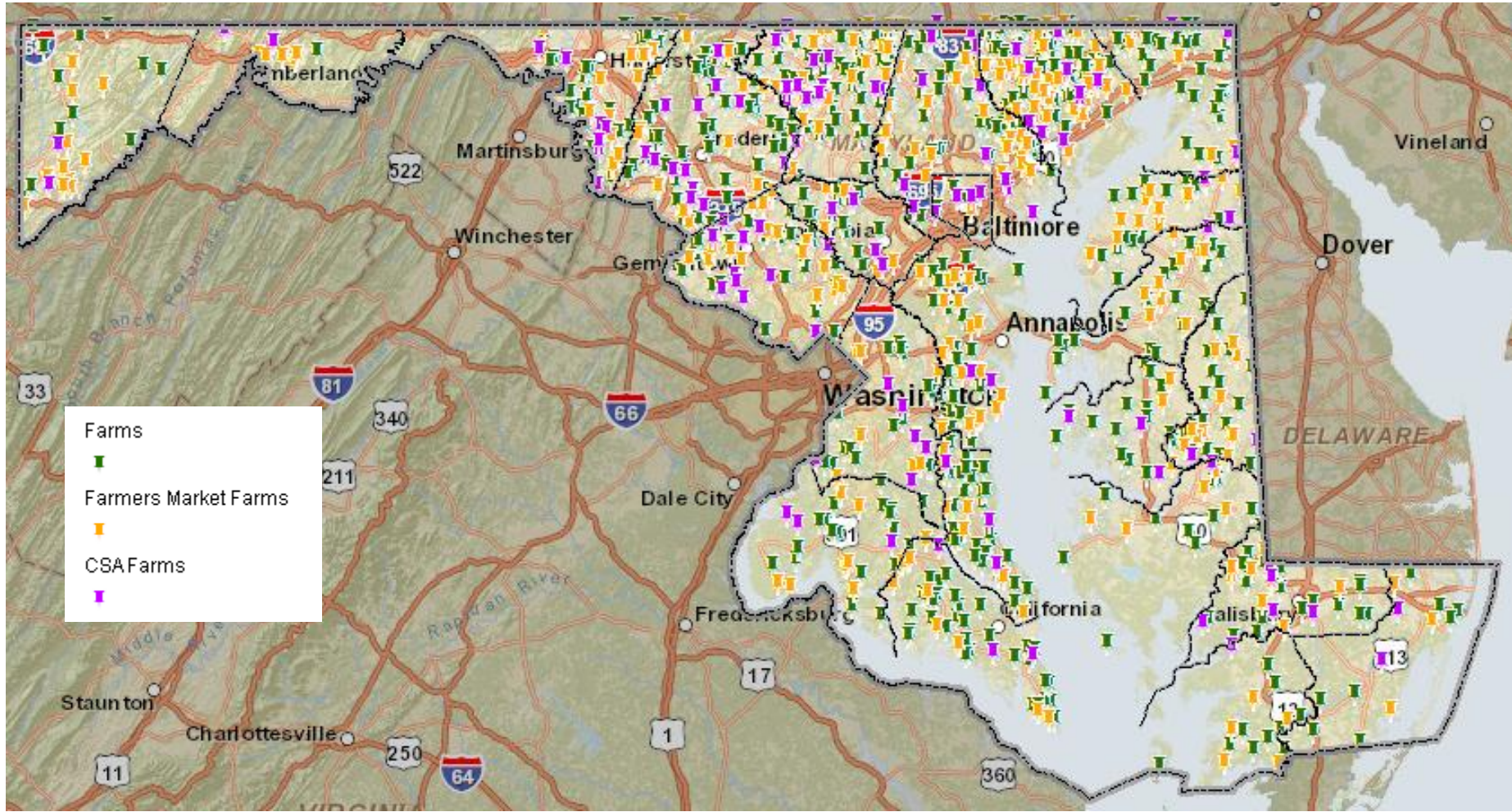
Data Source: Feeding America







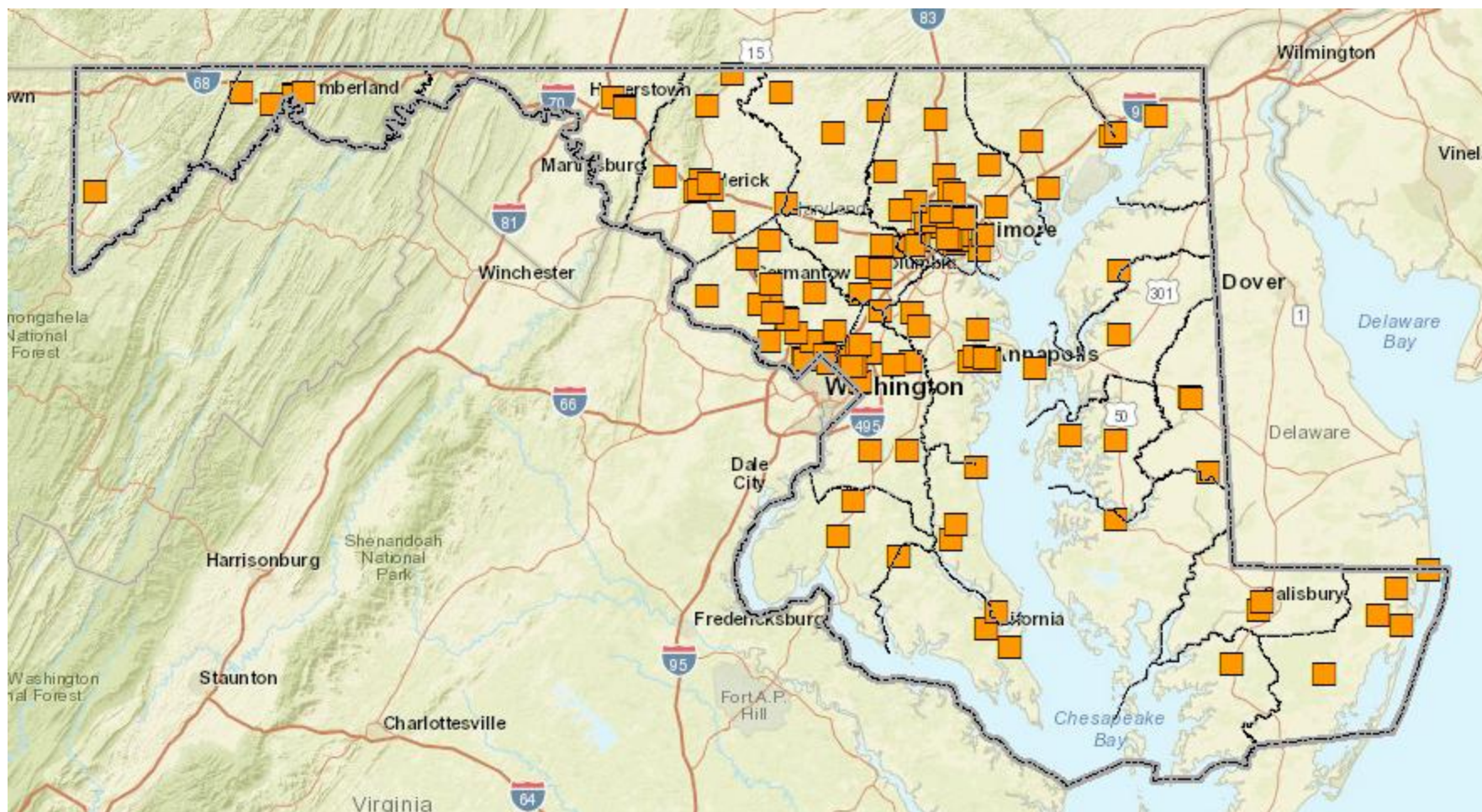
# Where is the food: Farms selling locally in Maryland



Data source: Johns Hopkins Center for a Livable Future



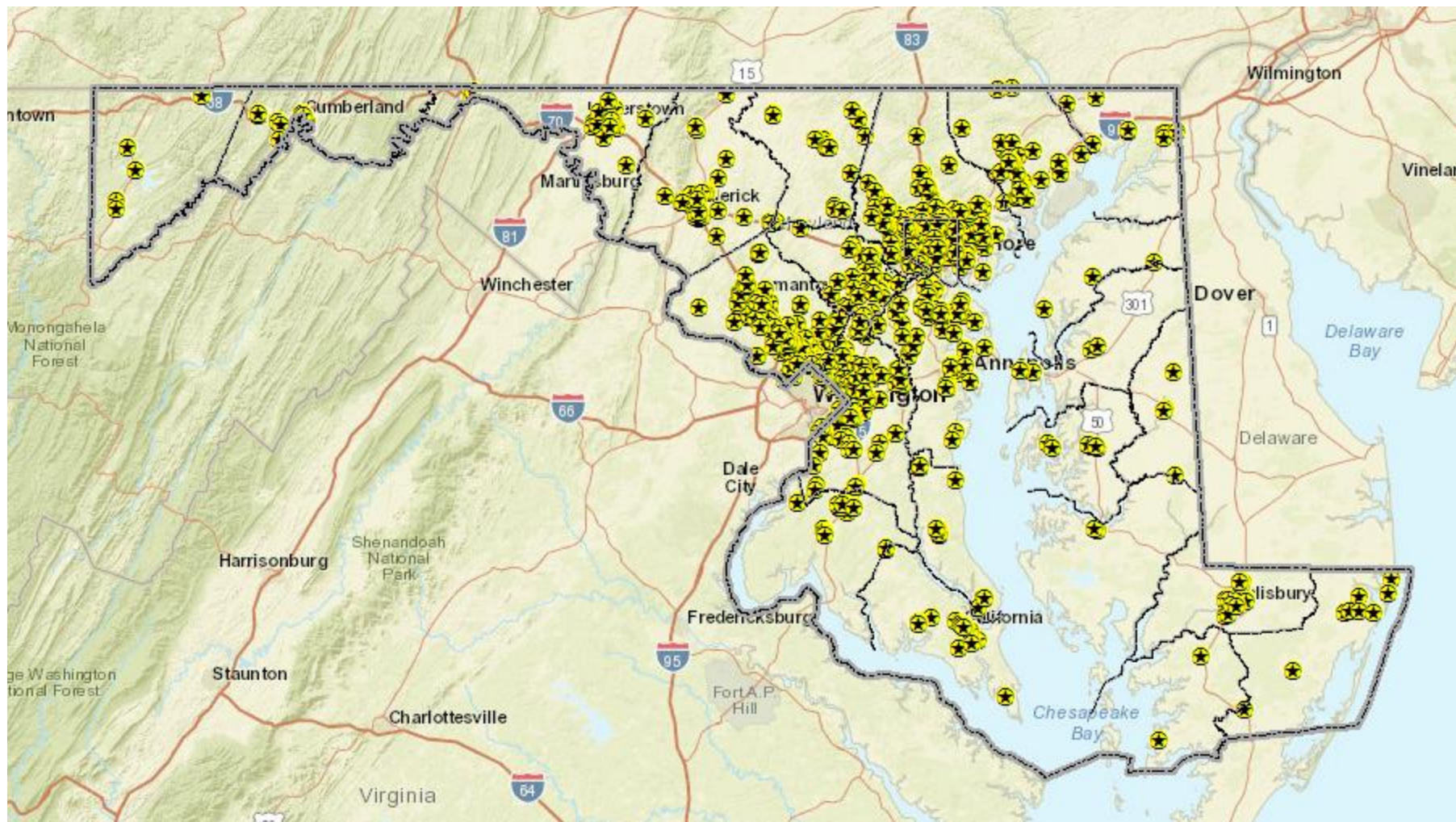
# Where is the food? Farmers markets in Maryland



Data source: Maryland Farmers Market Association



# Where is the food: Supermarkets in Maryland

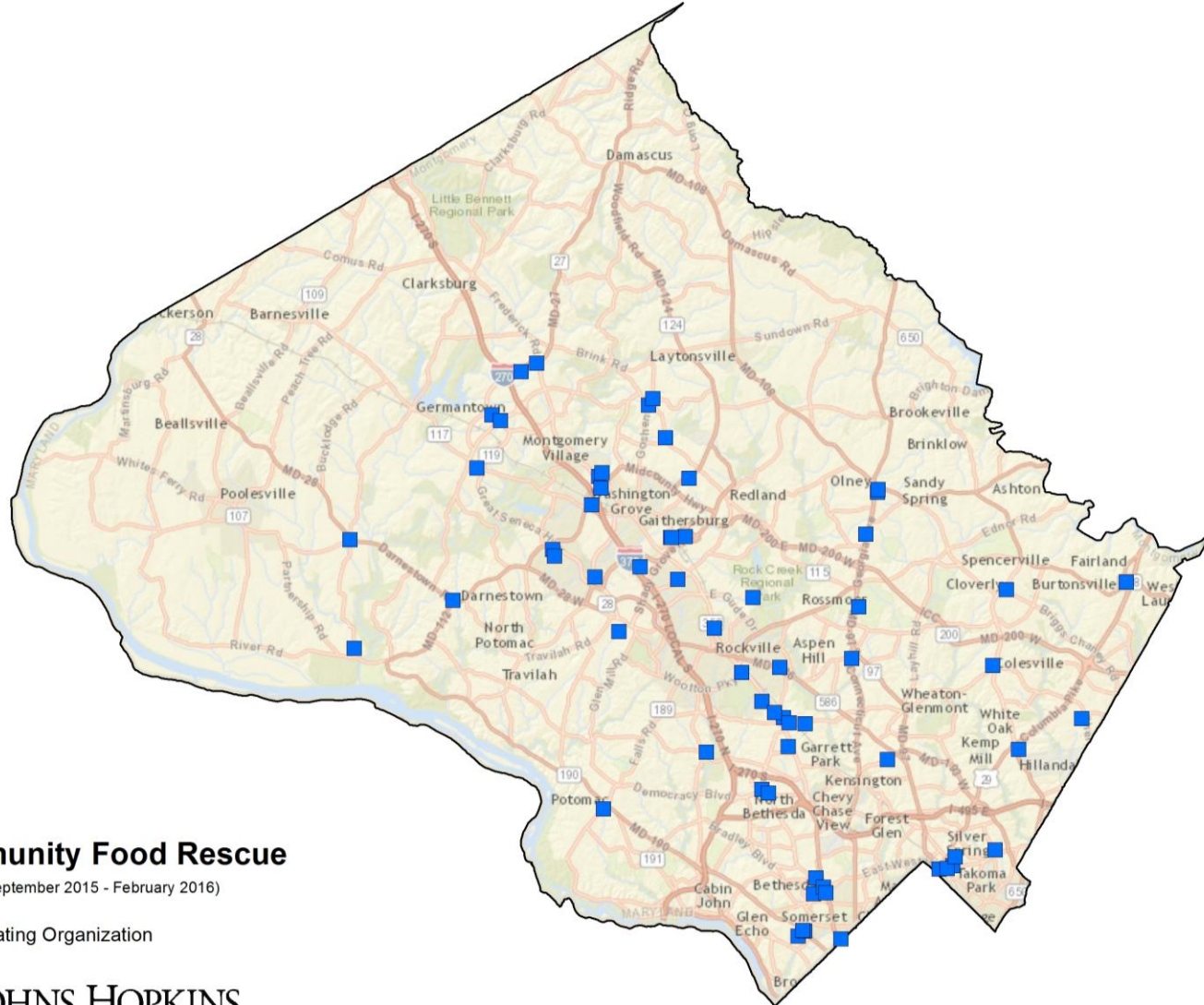


Data sources: The Reinvestment Fund, SNAP retailer locator, Johns Hopkins Center for a Livable Future





# Community Food Rescue: Donating Organizations



## Community Food Rescue

(September 2015 - February 2016)

■ Donating Organization

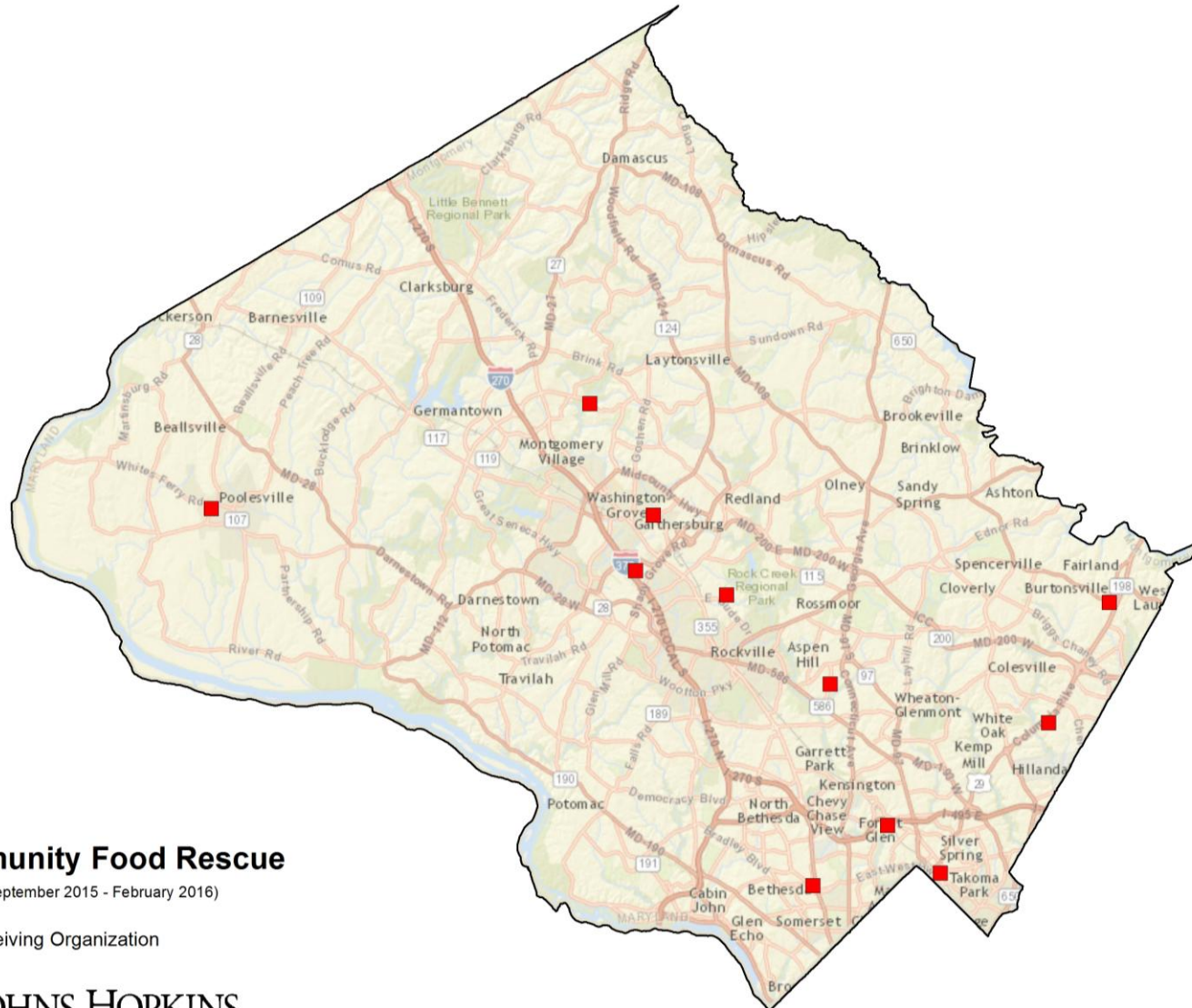


**JOHNS HOPKINS**  
CENTER for A LIVABLE FUTURE

© Johns Hopkins University, 2016



# Community Food Rescue: Donating Organizations



## Community Food Rescue

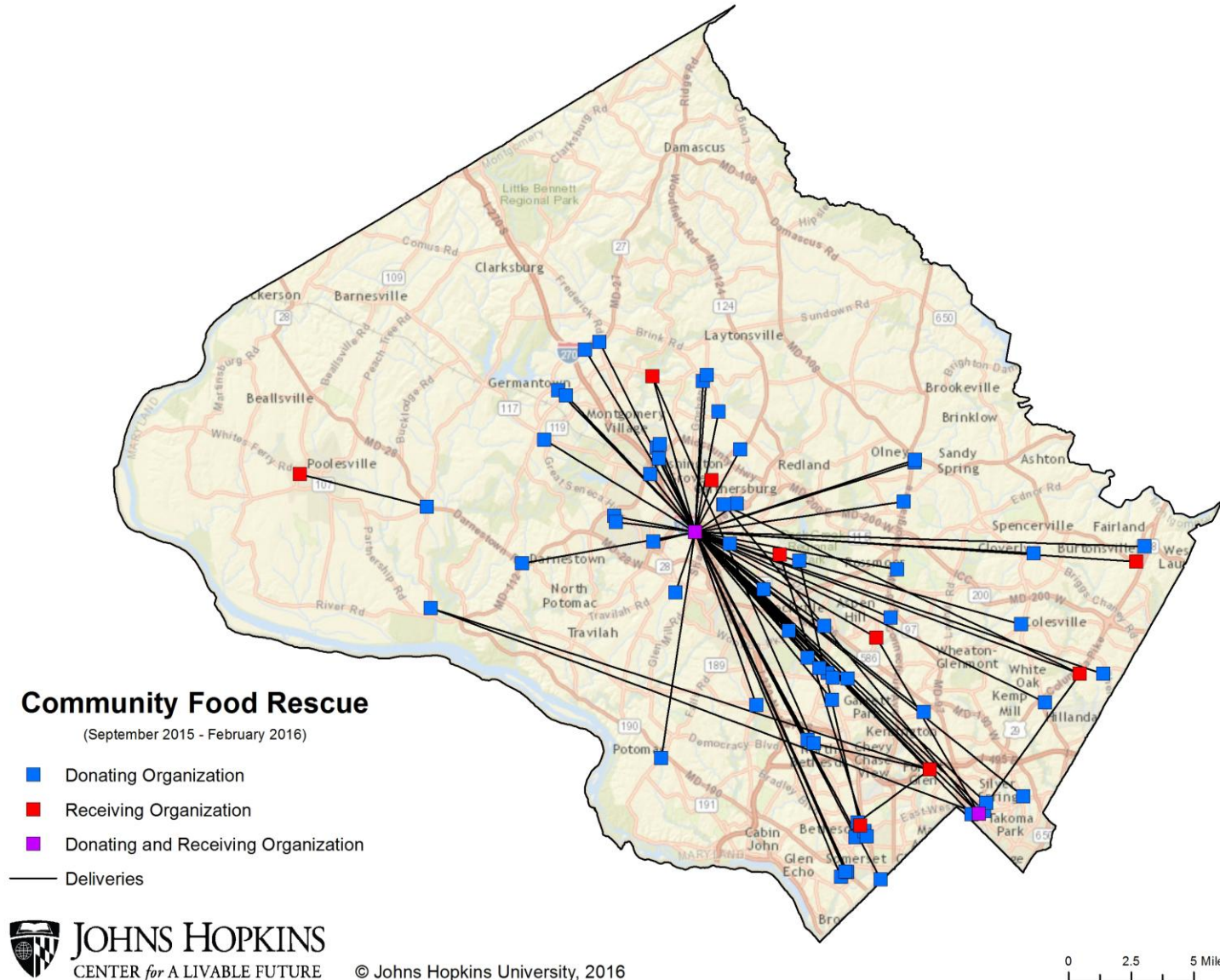
(September 2015 - February 2016)

■ Receiving Organization





# Community Food Rescue: Spaghetti Map!



# Thank you!

Please feel free to keep in touch:

[cburns18@jhu.edu](mailto:cburns18@jhu.edu)

[www.jhsph.edu/clf](http://www.jhsph.edu/clf)

[www.mdfoodsystemmap.org](http://www.mdfoodsystemmap.org)

Follow us! MDfoodmap on:



JOHNS HOPKINS  
CENTER *for* A LIVABLE FUTURE