



**Maryland**  
Department of  
the Environment

## **MARYLAND USED OIL RECYCLING PROGRAM (CY22 DATA)**

Prepared by:  
Land and Materials Administration  
Oil Control Program

Prepared for:  
Senate Education, Energy, and the Environment Committee

House Environment and Transportation Committee

Wes Moore, Governor  
State of Maryland

Aruna Miller, Lt. Governor  
State of Maryland

Bill Ferguson, Senate President  
Maryland General Assembly

Adrienne A. Jones, House Speaker  
Maryland General Assembly

March 2023

MARYLAND DEPARTMENT OF THE ENVIRONMENT  
1800 Washington Boulevard | Baltimore, MD 21230 | [mde.maryland.gov](http://mde.maryland.gov)  
410-537-3314 | 800-633-6101 x3314 | TTY Users: 7-1-1  
Wes Moore, Governor | Aruna Miller, Lt. Governor | Serena McIlwain, Secretary

Page Left Intentionally Blank

## **EXECUTIVE SUMMARY**

The Maryland Used Oil Recycling Program (the Program) is administered by the Maryland Department of the Environment (MDE) through a memorandum of understanding (MOU) with Maryland Environmental Service (MES). The authority for the Maryland Used Oil Recycling Program is found in Section 5-1001 of the Environment Article of the Maryland Annotated Code, the *Maryland Used Oil Recycling Act*.

MES is responsible for implementing a statewide program for the construction, operation, and the routine maintenance of used oil collection facilities; providing public education and outreach programs related to the disposal of used oil; and maintaining an information center to educate citizens regarding the proper disposal of used oil. Additionally, MES utilizes the collection sites for the collection of related recyclables including used antifreeze and used oil filters.

MES also administers funding for the purpose of implementing additional environmental projects. Specifically, this grant funding is used to assist in the construction of rain shelters to minimize stormwater contact with the used oil collection tanks and is also used to fund the purchase of above-ground storage tanks for new sites, as well as replacements for older sites.

Since 1988, the Program has resulted in the collection and recycling of over 19.7 million gallons of used oil in Maryland. Similarly, the Program has accomplished the collection and recycling of over 1 million gallons of used antifreeze from Maryland do-it-yourself automobile and boating enthusiasts.

During 2022, 433,084 gallons of used oil and 28,336 gallons of used antifreeze were collected from Program-sponsored locations. Additionally, during this period, 195 drums of used oil filters were collected for recycling.



Hyattsville - DPW

## **INTRODUCTION**

The 2022 Maryland Used Oil Recycling Program Annual Report is provided to the Maryland General Assembly as required by Section 5-1001(g) of the Environment Article, the *Maryland Used Oil Recycling Act*.

The Maryland Used Oil Recycling Program (the Program) is administered by the Maryland Department of the Environment (MDE) through a memorandum of understanding (MOU) with Maryland Environmental Service (MES). MES designates used oil collection facilities, offers technical and financial assistance to establish collection facilities, routinely inspects and cleans Program-sponsored facilities, provides public education, operates an information center, and implements other non-regulatory provisions of the *Maryland Used Oil Recycling Act*. MDE and MES are pleased to provide the following report detailing the accomplishments, initiatives, and progress of the Program during calendar year (“CY”) 22 as well as plans for CY23.

## **BACKGROUND**

The Program was created by the *Maryland Used Oil Recycling Act*, which was enacted in July 1978. Initial start-up funding for the Program was allocated from energy funds. This funding enabled the creation of a program to assist the home mechanic with proper used oil disposal. Farmers and boat owners at marinas also used these facilities for their oil recycling.



MES purchased oil collection tanks, collection boxes, hardware, and signs. County and local governments were solicited to assist in establishing convenient and accessible used oil collection sites for citizens. A variety of collection sites were established. Most are located at government-owned solid waste, public works, and road maintenance facilities.

The Program has been successful at recruiting and maintaining donor locations for several reasons: 1) free collection service of used oil; 2) Program-provided financial assistance for tanks and shelters; and 3) the Program assumes the responsibility for disposing of any contaminated used oil.

## **2022 PROGRAM UPDATES AND ACCOMPLISHMENTS**

Since its inception in 1988, the Program has expanded from 44 collection sites to the current 126 operational sites and has recycled more than 19.7 million gallons of used oil over this time period. Collection of used oil from all Program locations yielded 433,084 gallons of used oil in CY22. This was a 2.2 percent decrease from the 442,870 gallons collected in 2021. Historical used oil and antifreeze annual collection results are summarized in graphs at the end of the report. Spreadsheets of the detailed used oil and antifreeze collection records for the participating Program sites are attached as well (Appendix A).

## **Key Updates and Accomplishments**

- Collected and recycled 433,084 gallons of used oil.
  - Decreased 2% from 442,870 gallons in 2021
- Collected and recycled 195 drums of used oil filters
  - Increased 15% from 169 drums in 2021
- Collected and recycled 28,336 gallons of used antifreeze
  - Decreased 1.3% from 28,738 gallons in 2021
- Upgraded the Mt Airy DPW collection site with a new 860 gallon used oil recovery tank, reconstructed the containment area, and replaced the roof
- Full tank removal, disposal, and cleaning with installation of replacement tank at the Pocomoke Transfer Station
- Replaced broken pour box and painted tank at the Preston Collection site
- Power washed and repainted tanks at the Hyattsville DPW and Stemmer’s Run Transfer Station
- 4 Emergency cleanings during CY22 from tank overflows
- 6 Major cleanings of containment areas and oil tanks (inner and outer) from overflows and sludge build up
- Updated multiple sites with new spill pallets, gauges, fill boxes and new magnetic signage
- Performed supplementary cleaning and maintenance at Program-sponsored locations during the year.
  - Eight Harford County sites cleaned twice weekly (through an independent agreement between MES and Harford County)
  - Six (6) sites in Talbot County and Queen Anne’s County inspected and cleaned weekly with new digital level sensor gauges installed in oil tanks
  - Tank painting and sticker/magnetic sign replacement at more than 15 sites
  - Enhanced cleanings to continue in 2023 using the mobile cleaning unit



## **Administration**

The program cost to the Department for fiscal year (“FY”) 22 was \$148,132.03. The Department approved \$94,454 for MES to implement the Program in FY23. The current collection contract provides payment per gallon for collected oil based on a sliding scale. The revenue received in FY22 was \$383,874.59 leading to an estimated program revenue of \$235,742.56 in FY22. The Department approved funding, coupled with the expected revenue from the new collection contract, brings the total available program funding for FY23 to \$171,454.05.



Preston

## **Operation and Maintenance**

Good housekeeping practices are important aspects of spill control and contamination prevention. As part of its management of the Program, MES has conducted on-site audits of all Program-sponsored collection facilities to ensure that sponsors, recycling coordinators, site supervisors, and site operational staff are aware of their pollution prevention responsibilities. Additionally, MES staff conducted routine cleaning and maintenance, as

necessary, to assist the site hosts in maintaining environmental compliance. During CY22, MES performed supplementary cleaning and maintenance at most Program-sponsored locations.

To reduce costs associated with cleaning of the collection sites (i.e., the used oil tanks, concrete pads, etc.) and the associated oily water recovery, previously completed by private contractors, MES developed a mobile cleaning trailer for use at oil collection sites. The trailer, equipped with a power washer, water tanks, and a water recovery system, allows MES staff to thoroughly clean collection sites and recover the resulting oily water. The mobile cleaning trailer was deployed several times in CY22 for enhanced cleanings and oily water recovery, resulting in significant savings to the used oil program when compared to contractor cleanings.

MES continually reminds all site hosts that they are responsible for providing day-to-day monitoring and housekeeping of their tanks. MES staff provide assistance with housekeeping and compliance as needed, based on the results of the routine site inspections. MES maintains a full-time staff to conduct routine site audits and assist with site maintenance and cleaning. Sites are upgraded, as needed, to increase compliance and minimize the potential for impacts to the environment.

Given the concern over proper disposal of used oil, contaminated oil, and unauthorized dumping of trash and hazardous materials, MES continues to urge site hosts to remain in the Program. Because used oil can be easily contaminated with polychlorinated biphenyls, brake cleaning fluids, and other readily accessible chemicals, MES and MDE concur that citizens are better served by local governments staying within the established Program.

### **Public Outreach**

MES and MDE each maintain a webpage with information related to the Program. From the MES webpage, Marylanders can find the public information number **800-4RECYCLE** (800-473-2925) and an email address to inquire about proper disposal of used oil and antifreeze. MES also has a listing of collection sites by county. Hundreds of calls were made to the public information number in CY22, with most callers requesting information on used oil collection locations.

Also during CY22, information was provided to the public about the importance of proper handling, disposal, and recycling of used oil and antifreeze through social media outlets and environmental websites.

## **PLANNED ACTIVITIES FOR 2023**

### **Administration**

- MDE will continue to fund the Program and MES will continue to implement the Program.
- MES will continue the grant program to assist locations in upgrading existing sites.

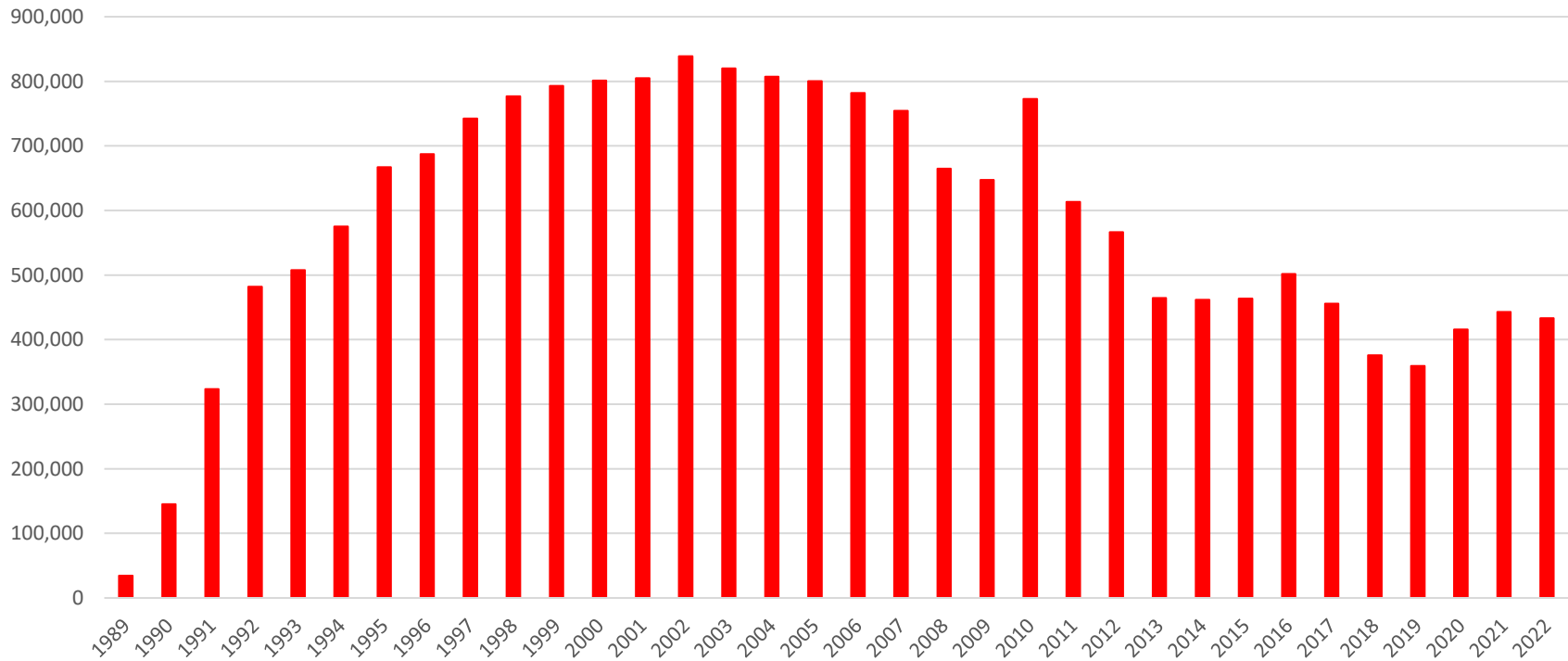
### **Operation and Maintenance**

- MES will continue annual inspections of all Program-participating sites to ensure continued protection of the environment.
- MES will continue the routine maintenance and cleaning program to ensure safe operation at participating sites.
- MES will continue the tank upgrade program by replacing single-wall 275-gallon tanks with new, more environmentally protective double-wall tanks.
- MES will explore ways to improve automated monitoring of participating sites to deter abuse of the facilities.

### **Public Outreach**

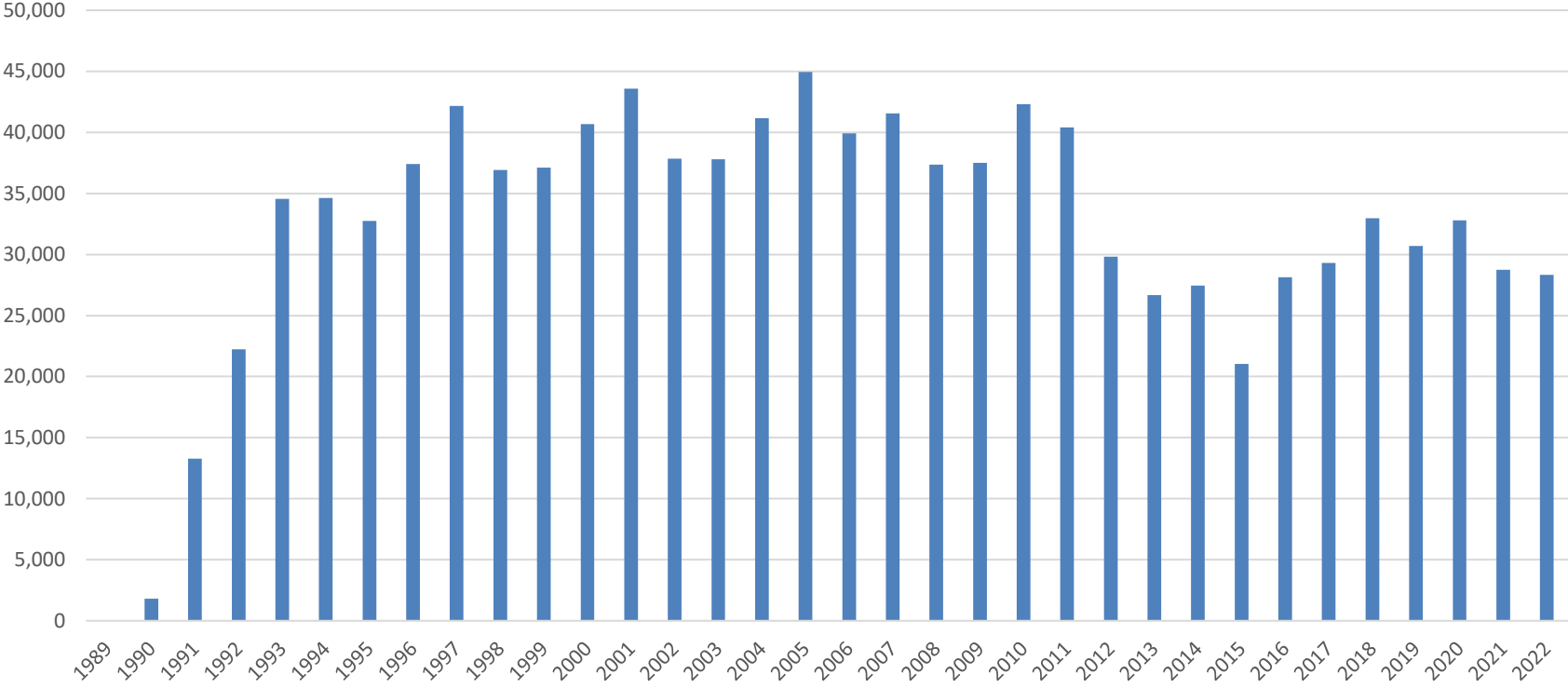
- MES will continue updating and linking the used oil recycling pages on [menv.com](http://menv.com).
- MES will continue public outreach and education at local county events.
- MES will send annual program reports to statewide solid waste managers and recycling coordinators.
- MES will continue membership in the Association of Responsible Recyclers while updating Program participants and citizens with current information, issues, and trends within the industry.
- MES will explore additional ways to market the Program to the public.

ANNUAL MES USED OIL RECOVERY  
DIY Oil Collection Sites  
(Gallons)





ANNUAL MES USED ANTIFREEZE RECOVERY  
DIY Oil Collection Sites  
(Gallons)



APPENDIX A

USED OIL and ANTIFREEZE COLLECTION DATA

2022

**Maryland Environmental Service  
2022 Used Oil Collection Report (gallons)**

County	Location	January	February	March	April	May	June	July	August	September	October	November	December	Total
Allegany County	Allegany County Road's		130		119.00		90		85			270		694
	Allegany County SW TF						130		110				225	465
	Allegany County Transit		66				60		60					186
	Flintstone SW Collection		242		102.00		240		170	145				899
	Moutainview LF		380		500.00		480		310	500		480	300	2,950
	Penn Mar Recycling		174		247.00		480		480	460		500	475	2,816
Allegany County Oldtown														0
Anne Arundel County	Annapolis Landing Marina							260		270			270	800
	Casa Rio Marina			280				260			200		240	980
	Crownsville- Maint					250		55		60				365
	Magothy Marina										265			265
	Mears Marina								325					325
	Port Annapolis				126.00			130				290		546
	White Rocks Marina				204.00								230	434
	Hidden Harbor Marina						480							480
Baltimore City	Eastern Sanitation Yard			501	400.00		400		480	480			365	2,626
	Northwest Sanitation Yard		497	107	233.00		280	390		380	220			2,107
	Northwest Transfer Station									485				485
	Quarantine Road Landfill			240					600			485		1,325
	Western Sanitation Yard							350						350
Baltimore County	Bowley's Marina			268					270		250		220	1,008
Caroline County	Holly Collection Site	515	265	1,183	902.00	820	820	620	750	850	820	930	470	8,945
	Melville Collection Site			202						300				502
	Midshore II Regional Landfill			432		390	155		310	170				1,457
	Old Denton Collection Site			339						460				799
	Preston Collection Site			270			270				250			790
	Denton Dept Public Works													0
Carroll County	Carroll County Fleet		630				970		800			1,275		3,675
	Manchester Town Garage	530		890		1090	295	835	500	630	400		400	5,570
	City of Taneytown Recycling			300	105.00	440	215	385	265			490	300	2,500
	Hampstead Town Maintenance	260		785		935	220	685	390	410	380		485	4,550
	Northern Landfill	1,920	1,420	2,610	2,695.00	2,650	2830	3,590	2,345	3,655	2,385	2,585	2,690	31,375
	Westminster PW	965	205	1,095	755.00	845	885	1,135	970	490	935	490	500	9,270
	Freedom District Water													0
	Town of Sykesville	755	685	850	775.00	1,425	940	1,025	810	1,430	1,065	775	590	11,125
Cecil County	Cecil County Central Landfill	600	715	865	1,620.00	795	1030	1,155	700	1,330	1,585	1,510	1,005	12,910
	Locust Point Marina													0
	Stemmers Run TS		210		460.00		480			340	200		220	1,910
	Town of Elkton Public Works		415	155		195	130	220		404	125	285	170	2,099
	Woodlawn Transfer Station	310	456	340	870.00	450	595	455	545	590	520	415	385	5,931
	Bohemia Vista Marina		78							100				178
Dorchester County	Beulah Landfill	375			385.00		415			480				1,655
	Cambridge WWTP										470			470
	City of Cambridge Public Works	355	190	539	493.00	295	435	180	310	360	200	265	250	3,872
	Golden Hill Landfill		330					340				480		1,150
	Secretary Transfer Station	200	170	63	124.00	180	110	200		200	265		130	1,642
Frederick County	Brunswick PW Garage	410	450	303	732.00	355	630	155	770	340	575	540	210	5,470
	Brunswick DWP (Shop)													0
	Mt. Airy Maintenance Facility	690	1,285	925	1,500.00	1,775	1435	1,500	1,640	1,085	805	1,390	1,330	15,360
	Frederick County Recycling	695	935	2,110	1,670.00	1,970	2850	2,030	2,820	1,960	1,360	2,070	1,800	22,270
	Town of Thurmont	160	75	330	577.00	380	730	420	210	300	400	620	620	4,822

County	Location	January	February	March	April	May	June	July	August	September	October	November	December	Total	
Garrett County	Bumble Bee		126		129	265			475				410	1,405	
	Garrett County Landfill	247				235			375				375	1,232	
	Garrett Highway Site	267			270	170			540				540	1,787	
	Kings Run Site	412				400			480				310	1,602	
	Route 135		548			345			270				210	1,373	
	Town of Grantsville	325				840			470				675	2,310	
Harford County	Abingdon Highway Shop	500	178	270	200	640	375	470	280	285	340	305	235	4,078	
	Aldino Highway Shop	550	200	625	620	365	490	255	440	400	560	275	315	5,095	
	City of Havre De Grace WW		469				485			475		315	65	1,809	
	Jarrettsville Highway Shop	325	1,220	1,115	2,055	1,075	1375	855	2,145	720	1,770	675	865	14,195	
	Joppatown WWTP	360	155	167	375	500	185	200	265	230	400	375		3,212	
	Norrsville Library Park&Recs	270	200	235	730	275	300	200	500	460	350	250	275	4,045	
	Scarboro Landfill	460	970	890	1,755	1,180	1310	1,250	1,155	1,135	1,670	930	880	13,585	
	Sod Runn WWTP														0
	Town of Aberdeen PW	190	195	160	200	250	245	250	145	300	440	350	100	2,825	
	Town of Bel Air PW	510	275	600	1,000	865	850	685	1,090	900	1,140	1,000	660	9,575	
Whiteford Highway Shop	375	605	425	915	410	680	475	385	755	645	400	315	6,385		
Kent County	Duck Puddle Drop Off		35					175			120			330	
	Haven Harbour Marina							501						501	
	Nicholson Drop Off		595		300	720	590	765		645	300	435	300	4,650	
	Sharptown Drop off		45											45	
Prince George's County	Cheltenham WWTP													0	
	City of Greenbelt DPW	550	550	1,100	1,100	550	1100	1,035	940	1,100	1,211	500	660	10,396	
	City of Hyattsville DPW		110			110			110		634			964	
	City of Laurel DPW	395	670	855	1,285	915	1140	1,170	905	725	845	835	1,215	10,955	
	City of New Carrollton DPW	472	250	945	754	458	895	550	1,003	619	869	264		7,079	
	Town of Cheverly			385			275		275					935	
	Town of Riverdale Park	275		550	168	120		119	288		275		275	2,070	
	PG County MRF			300										300	
Queen Anne's County	Batts Neck Transfer Station	365	200	269	270	400	320		430	375	250		695	3,574	
	Centerville Transfer Station	470	150	244	623	480	470	390	170	475	430	460	255	4,617	
	Church Hill Transfer Station		240		182	465			390	195	75	105	50	1,702	
	Grasonville Transfer Station	460	175	241	560	240	340	250	170	380	215	375	250	3,656	
	Glanding Transfer Station		230		121	280			280	120	250	100	150	1,531	
	Piney Narrows Yacht Haven				128			170		270				568	
	Queen Anne's Pub landing	635	140	388	505	745	630	450	670	580	600	770	500	6,613	
Somerset County	Chance Transfer Station		182				270		200			200		852	
	City of Crisfield DPW													0	
	Dublin-Costen TS				129							270		399	
	Marion-Crisfield TS		175	275		400	175		350		280	150		1,805	
	Mt Vernon Transfer Station		463	532		360	255		450		410	400		2,870	
	Somers Cove Marina			422					375					797	
	Somerset County Landfill		99	138		110	315		235			130		1,027	
	Eastern Correction Institute	250												250	
St Mary's County	Charlotte Hall Conv Center	725	970	1,090	1,075	885	995	1,425	1,195	995	900	885	740	11,880	
	Clements Conv Center	545	500	928	900	815	735	775	675	795	955		445	8,068	
	Maryland Intern Raceway	790						925			990			2,705	
	Oakville Conv Center	645	465	642	650	385	500	750	630	415	650	455	480	6,667	
	Ridge Conv Center	180	210	531	165	260	300	250	235	275	250	200	275	3,131	
	St Andrew Conv Center	970	645	839	1,205	635	900	1,385	925	995	980	925	865	11,269	
	St Andrew Vehide Main		325	136	200	425	150		205		480			1,921	
	Valley Lee Conv Center	435	275	289	550	380	570	530	435	600	520	625	340	5,549	
St Mary's Airport		220						210					430		

County	Location	January	February	March	April	May	June	July	August	September	October	November	December	Total
Talbot County	Bellevue Landing	105			68			160			150	205		688
	Dogwood Harbor	290			270	240		300			500	240		1,840
	Midshore Regional Landfill	250	340		298	260		350		480			400	2,378
	Neavitt Landing	120			125		270	65			250	210		1,040
	Oak Creek Landing	440	272		389	165	355	150	125	265	250	420		2,831
Trappe Landing	165		160	264	150	90	80		200	100	225		1,434	
Washington County	Dargan Transfer Station			150			140		185		205			680
	Greensburg TS	305		338	412	255	390		255		155	260	200	2,570
	Hancock Landfill			134			260			330				724
	Kaetzel Transfer Station	240		270	270		270	155	260		270		200	1,935
	40 West Landfill	610	780	735	390	1,575	560	960	1,230		855	1,390	670	9,755
Town of Boonsboro				336		160							496	
Wicomico County	Airport Conv Center	275		131		260		270						936
	Bivalve Conv Center		150					270			130			550
	Delmar Conv Center	90		67		160			195		200			712
	Fruitland Conv Center	270		275	134			270	120		270			1,339
	Hebron Conv Center	85		110				270			270			735
	Mardela Springs Conv Center	135			125				185					445
	Newland Park LF Conv Center	1,365	510	1,092	1,192	780	1200	800	1,470	605	1,585	1,080	775	12,454
	Parsonsburg Conv Center	170		150		240	160		135	130	150	120		1,255
	Quantico Conv Center	145			160				275					580
	Sharptown Conv Center	125		68			250		270		125			838
Wango Conv Center	275		85		190	200		130	65	80	90		1,115	
Wicomico Co. SW & Recycling			41	120		120						100	381	
Worcester County	Berlin Conv Center	615	209	537	545	635	550	150	275	530	595	375	525	5,541
	Central Landfill	380		100	167	285		140		275	100	155		1,602
	Pocomoke City Conv Center	130			262	130				365		210		1,097
	Snow Hill Conv Center	275		71	270	155		270		265	260	135		1,701
	Worcester County DPW							145		75	80	110		410
		January	February	March	April	May	June	July	August	September	October	November	December	2022 Totals
<b>Total Gallons</b>		<b>28,553</b>	<b>25324</b>	<b>36,082</b>	<b>40,510</b>	<b>38673</b>	<b>41620</b>	<b>37090</b>	<b>42901</b>	<b>37468</b>	<b>40059</b>	<b>34329</b>	<b>30475</b>	<b>433,084</b>

**Maryland Environmental Service  
2022 Antifreeze Collection Report (gallons)**

County	Location	January	February	March	April	May	June	July	August	September	October	November	December	Total
Allegany County	Allegany County Road's													0
	Allegany County SW TF													0
	Allegany County Transit													0
	Flintstone SW Collection									20				20
	Moutainview LF						75		130	20				225
	Penn Mar Recyding				5.00		90		50	35				180
Allegany County Oldtown													0	
Anne Arundel County	Annapolis Landing Marina													0
	Casa Rio Marina													0
	Crownsville Hospital													0
	Magothy Marina													0
	Mears Marina								25					25
	Port Annapolis													0
	White Rocks Marina				15.00									15
Hidden Harbor Marina													0	
Baltimore City	Eastern Sanitation Yard													0
	Northwest Sanitation Yard													0
	Northwest Transfer Station													0
	Quarantine Road Landfill													0
	Western Sanitation Yard													0
Baltimore County	Bowley's Marina							60		10			70	
Caroline County	Holly Collection Site	65					60		65	100				290
	Melville Collection Site			10										10
	Midshore II Regional Landfill													0
	Old Denton Collection Site													0
	Preston Collection Site										20			20
	Denton Dept Public Works													0
Carroll County	Carroll County Fleet				250.00								200	450
	Manchester Town Garage	55				230				175				460
	City of Taneytown Recycling													0
	Hampstead Town Maintenance	65		35				50					275	425
	Northern Landfill	125	200	250	600.00	190	315	450	200	250	330	375	175	3,460
	Westminster PW													0
	Freedom District Water						90							90
	Town of Sykesville	25	50	100		150			300	200			170	995
Cecil County	Cecil County Central Landfill				125.00	50				125		80	60	440
	Locust Point Marina													0
	Stemmers Run TS		50							40				90
	Town of Elkton Public Works		45	25		125		25		35	10	15		280
	Woodlawn Transfer Station			65			75	20		40				200
	Bohemia Vista Marina													0
Dorchester County	Beulah Landfill	20					20							40
	Cambridge WWTP													0
	City of Cambridge Public Works	45	25	15				95		100				280
	Golden Hill Landfill		15											15
	Secretary Transfer Station													0
Frederick County	Brunswick PW Garage													0
	Brunswick Dept PW													0
	Mt. Airy Maintenance Facility	75		400	200.00	250	125	100	350		100	100	100	1,800
	Frederick County Recycling	85	100	350	200.00	300	480		600	200	300	340		2,955
	Town of Thurmont		80		50.00	40		30				50		250



County	Location	January	February	March	April	May	June	July	August	September	October	November	December	Total
Talbot County	Bellevue Landing													0
	Dogwood Harbor													0
	Midshore Regional Landfill		25			120				75				220
	Neavitt Landing													0
	Oak Creek Landing													0
	Trappe Landing													0
Washington County	Dargan Transfer Station			10					35					45
	Greensburg TS	40			15	20	20		20	10		40		165
	Hancock Landfill						20							20
	Kaetzel Transfer Station				2		40		20					62
	40 West Landfill		90		80	130			140		100	70		610
	Town of Boonsboro													0
Wicomico County	Airport Conv Center	55				20								75
	Bivalve Conv Center		52					30						82
	Delmar Conv Center	15												15
	Fruitland Conv Center	15		5				25						45
	Hebron Conv Center							20						20
	Mardela Springs Conv Center	50			1									51
	Newland Park LF Conv Center	325	35	20	150		175		155		150	110		1,120
	Parsonsburg Conv Center						15				30			45
	Quantico Conv Center	10			5				10					25
	Sharptown Conv Center										15			15
Wango Conv Center	10				15								25	
Wicomico Co. SW & Recycling													0	
Worcester County	Berlin Conv Center	55	15	2	105	25	30		30	30		60		352
	Central Landfill	20			55									75
	Pocomoke City Conv Center	15			25	50								90
	Snow Hill Conv Center	20												20
	Worcester County DPW													0
		<b>January</b>	<b>February</b>	<b>March</b>	<b>April</b>	<b>May</b>	<b>June</b>	<b>July</b>	<b>August</b>	<b>September</b>	<b>October</b>	<b>November</b>	<b>December</b>	<b>2022 Totals</b>
<b>Total Gallons</b>		<b>1,935</b>	<b>1615</b>	<b>2199</b>	<b>2493</b>	<b>3935</b>	<b>2675</b>	<b>1865</b>	<b>3705</b>	<b>2495</b>	<b>1989</b>	<b>1830</b>	<b>1600</b>	<b>28,336</b>