

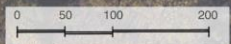
VILLAS AT SEVERN CREST

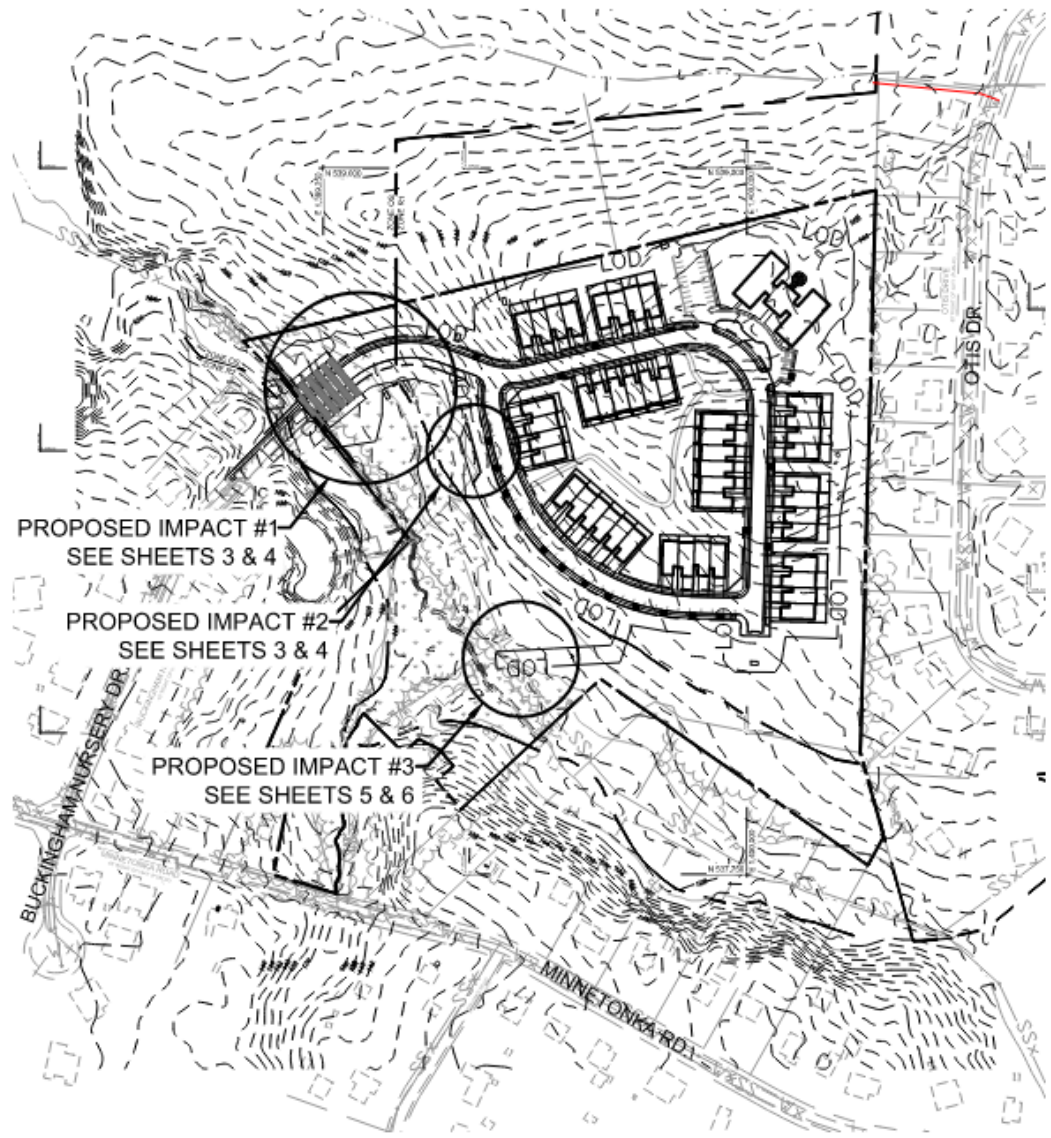
ANNE ARUNDEL COUNTY, MARYLAND



LEGEND

- FOREST LOD (LIMIT OF DISTURBANCE)
- FOREST
- SWM (typ.)
- GRASS/GROUNDCOVER
- SHRUBS
- ORNAMENTAL TREE
- SHADE TREE
- EVERGREEN TREE
- 45: 28' WIDE ADULT INDEPENDENT ATTACHED VILLAS





PROPOSED IMPACT #1
SEE SHEETS 3 & 4

PROPOSED IMPACT #2
SEE SHEETS 3 & 4

PROPOSED IMPACT #3
SEE SHEETS 5 & 6



Dewberry

Dewberry
Engineers Inc.

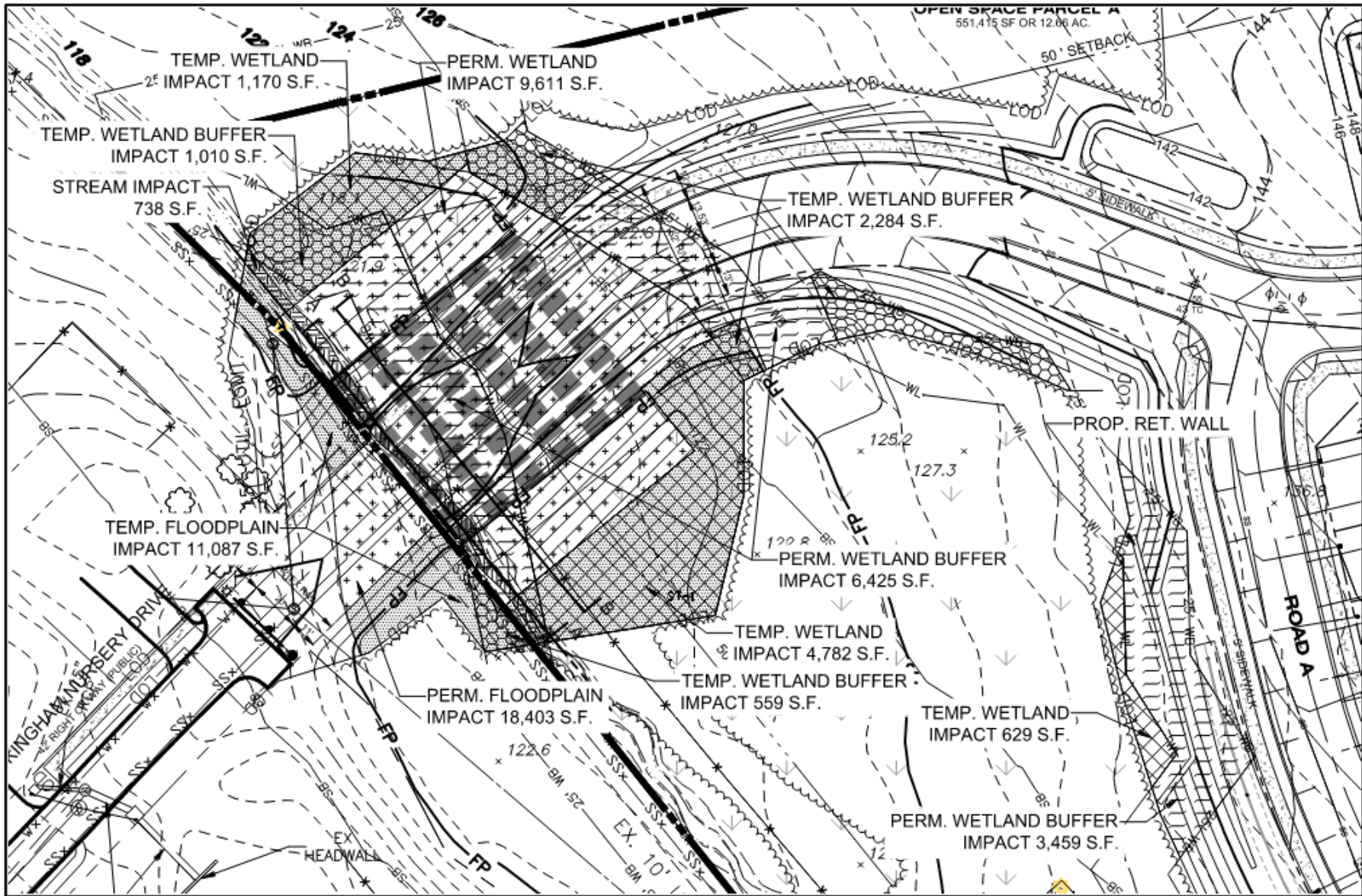
4601 FORBES BOULEVARD
SUITE 300
LANHAM, MD 20706
301.731.5551
301.731.0188 (FAX)
www.dewberry.com

TITLE
CONTEXT MAP
WETLAND IMPACT EXHIBITS

PROJECT
VILLAS AT SEVERN CREST

DESIGN: -
DRAWN: JH
CHECKED: TA
DATE: OCT. 2019

SCALE:
1"=300'
SHEET NO.
2 OF 9
PROJECT NO.
50074017



Dewberry

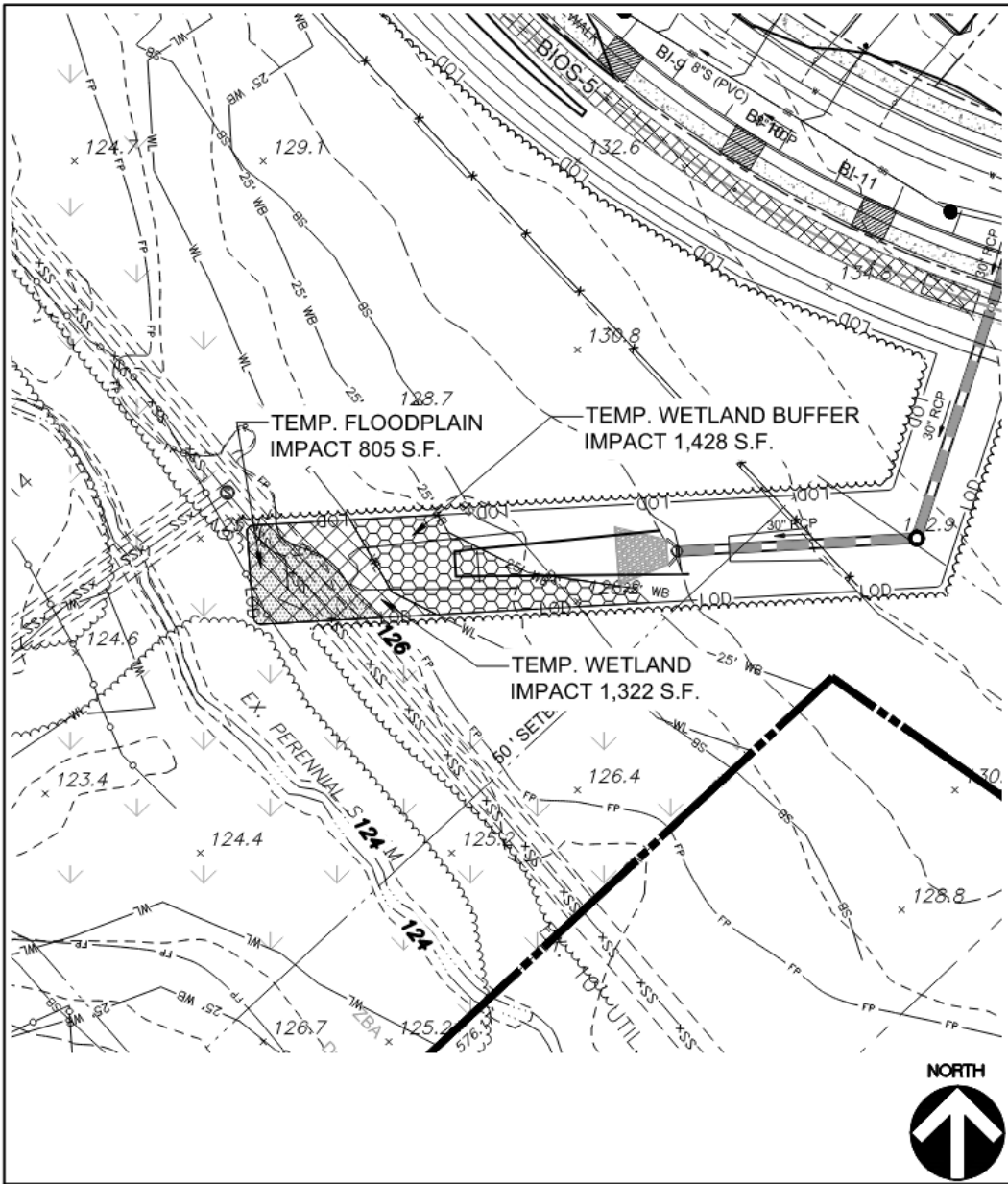
Dewberry
Engineers Inc.


4601 FORBES BOULEVARD
SUITE 300
LANHAM, MD 20706
301.731.5551
301.731.0188 (FAX)
www.dewberry.com

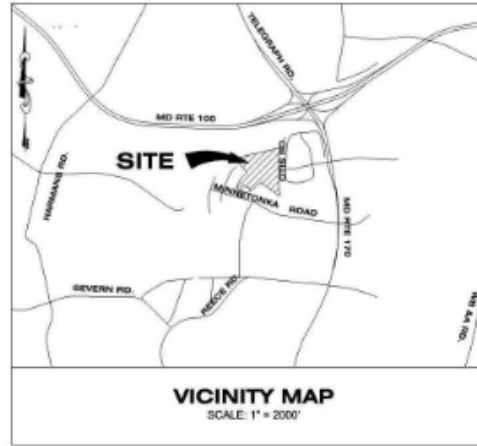
| | |
|---------|---|
| TITLE | PROPOSED CONDITIONS WETLAND IMPACT EXHIBITS AREAS #1 AND #2 |
| PROJECT | VILLAS AT SEVERN CREST |

| | |
|----------|-----------|
| DESIGN: | - |
| DRAWN: | JH |
| CHECKED: | TA |
| DATE: | OCT. 2019 |

| | |
|-------------|----------|
| SCALE: | 1"=50' |
| SHEET NO. | 4 OF 9 |
| PROJECT NO. | 50074017 |


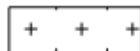


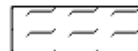




| | | | |
|---|------------------------|---|-----------|
|  Dewberry Dewberry Engineers Inc. | DATE | TITLE | SCALE: |
| | OCT. 2019 | PROPOSED CONDITIONS WETLAND IMPACT EXHIBITS AREA #3 | 1"=40' |
| 4601 FORBES BOULEVARD SUITE 300 LANHAM, MD 20706 301.731.5551 301.731.0188 (FAX) www.dewberry.com | PROJ. NO. | PROJECT | SHEET NO. |
| 50074017 | VILLAS AT SEVERN CREST | | 6 OF 9 |



| Impact | Non-Tidal Wetland Permanent Impact | Non-Tidal Wetland Temporary Impact | 25' Wetland Buffer Permanent Impact | 25' Wetland Buffer Temporary Impact | Floodplain Permanent Impact | Floodplain Temporary Impact | Stream Impact | Total Impact |
|-----------------------|------------------------------------|------------------------------------|-------------------------------------|-------------------------------------|-----------------------------|-----------------------------|----------------------|--------------|
| Proposed Improvements | 9,611 S.F. | 7,903 S.F. | 9,884 S.F. | 5,281 S.F. | 18,403 S.F. | 11,892 S.F. | 738 S.F. 190 L.F. | 63,712 S.F. |

IMPACT LEGEND

| | | | |
|---|-----------------------------------|---|-------------------------------|
|  | WETLAND IMPACT - PERMANENT |  | FLOODPLAIN IMPACT - PERMANENT |
|  | WETLAND IMPACT - TEMPORARY |  | FLOODPLAIN IMPACT - TEMPORARY |
|  | WETLAND BUFFER IMPACT - PERMANENT |  | STREAM IMPACT |
|  | WETLAND BUFFER IMPACT - TEMPORARY | | |



Dewberry
Dewberry
Engineers Inc.

4601 FORBES BOULEVARD
SUITE 300
LANHAM, MD 20706
301.731.5551
301.731.0188 (FAX)
www.dewberry.com

TITLE
WETLAND IMPACT EXHIBITS

PROJECT
VILLAS AT SEVERN CREST

DESIGN: -
DRAWN: JH
CHECKED: TA
DATE: OCT. 2019

SCALE:
1"=500'
SHEET NO.
1 OF 9
PROJECT NO.
50074017